

East Allington Primary School

Child Protection and Safeguarding Policy

Board Approved Date	
Version	3
Author Initials	AGO
Review Date	September 2026

(This policy supersedes all previous Safeguarding and Child Protection Policies)

KEY SCHOOL AND TRUST PERSONNEL		
Role:		
Designated Safeguarding Lead (DSL)		
Name	Email	Telephone
Mr Liam Fielding	liam.fielding@educationsouthwest.org.uk	01548 521305
Role:		
Deputy Designated Safeguarding Lead(s) (DSL)		
Name	Email	Telephone
Karen Partridge	karen.partridge@eastallingtonprimary.org.uk	01548 521305
Emily Risby	senco@eastallingtonprimary.org.uk	01548 521305
Role:		
Safeguarding Governor(s)		
Name	Email	Telephone
Chloe Toorneini	chloe.toorneini@educationsouthwest.org.uk	01548 521305
Role:		
Trust Safeguarding and Attendance Lead		
Name	Email	Telephone
Andy Goodwin	andy.goodwin@educationsouthwest.org.uk	01626 366969 ext:1503
Role:		
Safeguarding Trustee		
Name	Email	Telephone
David Potter	david.potter@educationsouthwest.org.uk	-

AMMENDMENTS

The Child Protection and Safeguarding Policy was subject to major structural change in 2024/25 to ensure that it was fit for purpose. Much of the policy content remained the same as previous versions of the policy but was also updated in relation to changes to Keeping Children Safe in Education 2025 and Working Together to Safeguard Children 2023

Summary of changes since September 2024

July 2025	Substantial structural change of the policy from previous versions
-----------	--

TABLE OF CONTENTS

1	SAFEGUARDING STATEMENT	4
2	TERMINOLOGY	4
3	SAFEGUARDING LEGISLATION AND GUIDANCE	4
4	POLICY PRINCIPLES, AIMS AND VALUES	5
5	SAFE SCHOOL, SAFE STAFF	6
6	ROLES AND RESPONSIBILITIES	7
7	CONFIDENTIALITY AND INFORMATION SHARING	9
8	RECOGNISING AND RESPONDING TO SAFEGUARDING CONCERNS.....	10
9	CHILDREN WHO ARE PARTICULARLY VULNERABLE.....	13
10	WHISTLEBLOWING	14
11	ALLEGATIONS AGAINST STAFF	15
12	REASONABLE FORCE AND PHYSICAL INTERVENTION	16
13	APPENDIX.....	17
13.1	CATEGORIES OF ABUSE	17
13.2	ANTI-BULLYING/CYBERBULLYING	21
13.3	BULLYING, PREJUDICE AND RACIST INCIDENTS	21
13.4	RADICALISATION AND EXTREMISM	21
13.5	DOMESTIC ABUSE (INC OPERATION ENCOMPASS)	24
13.6	EXPLOITATION (INCL. CHILD SEX EXPLOITATION, CHILD CRIMINAL EXPLOITATION & COUNTY LINES)	25
13.7	FEMALE GENITAL MUTILATION (FGM)	28
13.8	FORCED MARRIAGE	30
13.9	HONOUR-BASED ABUSE	30
13.10	ONE CHANCE RULE	30
13.11	MENTAL HEALTH.....	31
13.12	PRIVATE FOSTERING ARRANGEMENTS	31
13.13	LOOKED AFTER CHILDREN AND PREVIOUSLY LOOKED AFTER CHILDREN.....	32
13.14	CHILDREN MISSING EDUCATION & CHILDREN ABSENT FROM EDUCATION	32
13.15	CHILD ON CHILD ABUSE (INCLUDING SEXUAL VIOLENCE, SEXUAL HARASSMENT & HSB).....	32
13.16	ONLINE SAFETY	35
13.17	YOUTH PRODUCED SEXUAL IMAGERY (SEXTING).....	38
13.18	ARRANGEMENTS FOR SAFEGUARDING CHILDREN ON TRIPS AND VISITS AND FOR WORK EXPERIENCE AND CLUBS RUN BY EXTERNAL PROVIDERS	39
13.19	ADDITIONAL RESOURCES	40

1 SAFEGUARDING STATEMENT

At East Allington Primary School, we recognise our moral and statutory responsibility to safeguard and promote the welfare of all pupils and expect all staff, governors, volunteers to share this commitment. We recognise that all children regardless of age, disability, SEND, gender reassignment, race, religion or belief, sex or sexual orientation have an equal right to protection from all types of harm or abuse. We endeavour to provide a safe and welcoming environment where children are respected and valued. We are alert to the signs of abuse, neglect and exploitation and follow our procedures to ensure that children receive effective support, protection and justice. We listen to our pupils and take seriously what they tell us; children are aware of the adults they can talk to and if they have a concern. When there are concerns for a child's welfare, we may need to share information and work in partnership with other agencies. We will ensure concerns are discussed with parents/carers first unless we have reason to believe that by doing so would be contrary to the child's welfare. This Child Protection and Safeguarding Policy underpins and guides our safeguarding procedures and protocols.

2 TERMINOLOGY

Safeguarding and promoting the welfare of children is defined as:

- providing help and support to meet the needs of children as soon as problems emerge.
- protecting children from maltreatment, whether that is within or outside the home, including online.
- preventing impairment of children's mental and physical health or development.
- ensuring that children grow up in circumstances consistent with the provision of safe and effective care.
- promoting the upbringing of children with their birth parents, or otherwise their family network through a kinship care arrangement, whenever possible and where this is in the best interests of the children.
- taking action to enable all children to have the best outcomes in line with the outcomes set out in the Children's Social Care National Framework.¹

Child Protection is a part of safeguarding and promoting welfare. It refers to the activity that is undertaken to protect specific children who are suffering, or are likely to suffer, significant harm. This includes harm that occurs inside or outside the home, including online.

Staff refers to all those working for or on behalf of the school, full or part time, temporary or permanent, in either a paid or voluntary capacity.

Child includes everyone under the age of 18 or 25 if a care leaver.

Parents refers to birth parents and other adults who are in a parenting role, for example step-parents, foster carers, adoptive parents, and LA corporate parents

3 SAFEGUARDING LEGISLATION AND GUIDANCE

The following safeguarding legislation and guidance has been considered when drafting this policy:

- [Education Act 2002 Section 175 \(maintained schools only\)](#)
- [Education Act 2002 Section 157 \(Independent schools inc. Academies and CTC's\)](#)
- [The Education \(Independent School Standards\) \(England\) Regulations 2003](#)

¹ Working Together To Safeguard Children 2023

- [The Safeguarding Vulnerable Groups Act 2006](#)
- [Teachers' Standards \(Guidance for school leaders, school staff and governing bodies\)](#)
- [Working Together to Safeguard Children](#)
- [Keeping Children Safe in Education](#)
- [Information Sharing 2024](#)
- [What to do if you're worried a child is being abused](#)
- [Filtering and monitoring standards in schools and colleges \(DfE\)](#)
- [Early Years Foundation Stage Framework – School Based Providers \(DfE\)](#)

4 POLICY PRINCIPLES, AIMS AND VALUES

The principles of this policy are that:

- The safeguarding and welfare of all children is paramount
- All children, regardless of age, gender, ability, race, religion or belief, sexual identity and SEND have equal rights to protection, safeguarding and inclusion.
- All staff have an equal responsibility to act on suspicion or disclosure concerns that may suggest a child is at risk of harm
- Children and staff involved in child protection issues will receive appropriate support

This policy aims to:

- Raise the awareness of all staff of the need to safeguard children.
- Provide all staff with guidance on the procedures they should adopt in the event that they suspect a child, young person may be experiencing, or be at risk of experiencing, harm. Including (by DSL/DDSL) consideration of the use of appropriate assessments, resources and agency support.
- Provide an environment in which children and young people feel safe, secure, valued, and respected, and that they will be listened to should they make a disclosure.
- Raise awareness that abuse can be both familial and/or contextual; and abusers can be both adult/s to child/ren or child/ren to child/ren.
- Demonstrate the school's commitment to safeguarding and child protection of pupils, parents and other partners.
- Provide a systematic means of monitoring children known or thought to be at risk of harm.
- To emphasise the need for high levels of communication between staff and the designated safeguarding leads internally, and with external agencies and partners, including our contribution to assessments, referrals, and support plans.
- To develop and promote effective working relationships with other partnership agencies, particularly Children's Social Care, Police and Health.
- Support children's development in ways that will foster security, confidence, and independence.
- Ensure that all staff working within our setting who have substantial access to children have been checked as to their suitability, including verification of their identity, qualifications, and a satisfactory DBS check (according to guidance), and a single central record is kept for audit.
- Provide clarity and expectations on professional behaviours and code of conduct including lone working requirements

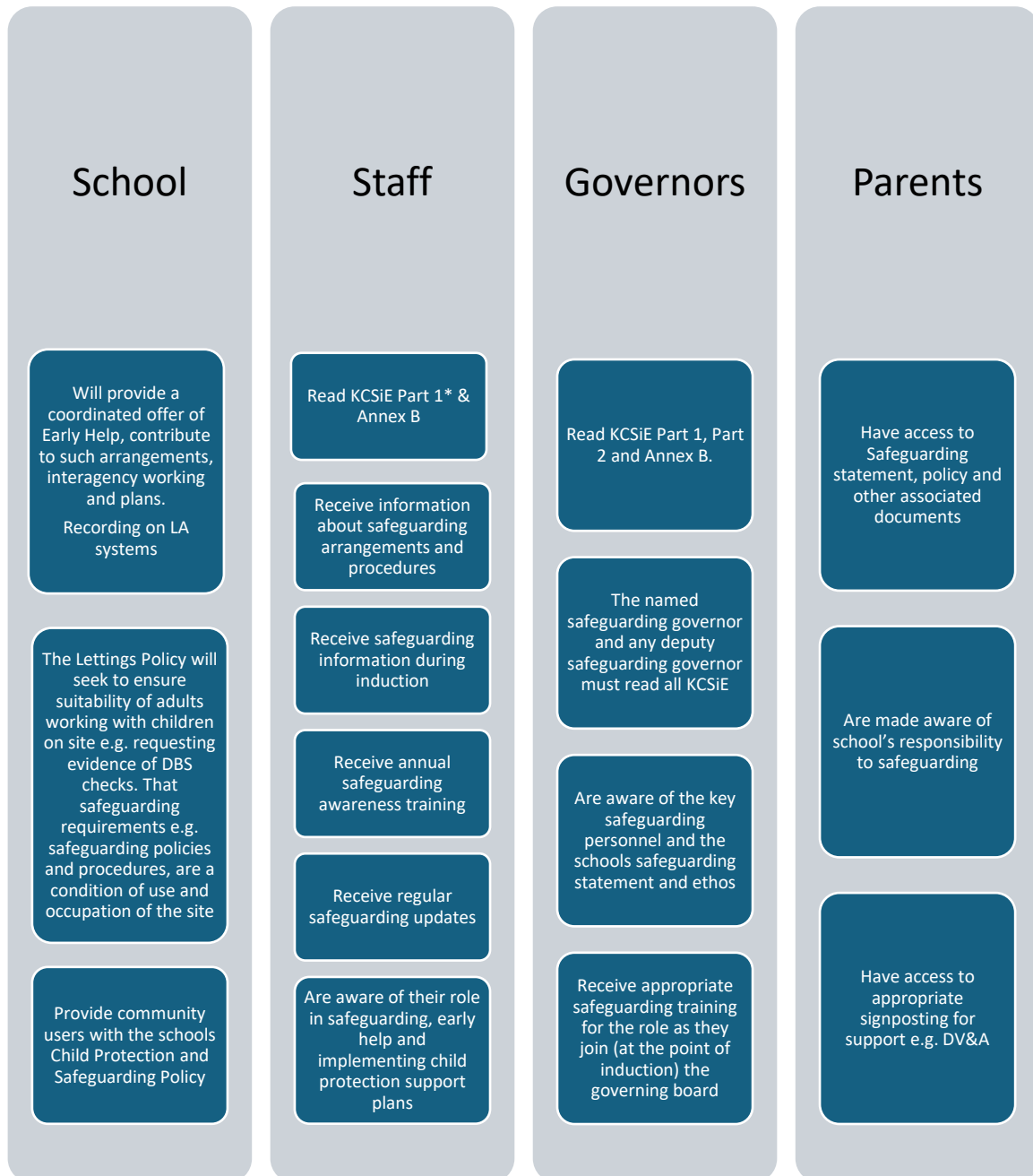
The values demonstrated throughout this policy mirror those of Education South West:

- Opportunity
- Community

- Character
- Achievement

5 SAFE SCHOOL, SAFE STAFF

The school, staff, governors and parents all have a responsibility to engage in keeping our children safe:



6 ROLES AND RESPONSIBILITIES

‘Safeguarding is Everyone’s Responsibility’. In our school and Trust this means that we each have a role to play in ensuring that all children are protected from harm. This section outlines the role that each member of our community should take in safeguarding children and reflects the statutory guidance as set out in Keeping Children Safe in Education.

Those in Governance

All members of The Governing Body understand and fulfil their responsibilities, namely, to ensure that there is a Child Protection and Safeguarding policy together with a Staff Behaviour policy (Code of Conduct).

Governors and Trustees will ensure that:

- They undergo the appropriate safeguarding and child protection training (including online) at induction and that this is regularly updated.
- There are child protection and safeguarding, recruitment and managing allegations policies and procedures, including the Staff Code of Conduct. The policies and procedures are consistent with the Local Authority and statutory requirements and are reviewed annually and available publicly
- All staff (full time, part time and temporary) and volunteers are provided with the Child Protection and Safeguarding Policy, Staff Code of Conduct and Behaviour Policy
- All staff and volunteers have read at least Part 1 and Annex B of Keeping Children Safe in Education as well as the procedures that are in place to assist staff in understanding and discharging their roles and responsibilities as set out in the guidance
- The school has in place the appropriate policy and procedure to ensure that the statutory obligations in regards of safer recruitment are met. They will also ensure that at least one person in every recruitment panel has completed safer recruitment training.
- The school has in place procedures for dealing with allegations of abuse against staff (including the Headteacher), supply staff, volunteers and against other children and that a referral is made to the DBS if a person in regulated activity has been dismissed or removed due to safeguarding concerns or would have had they not resigned.
- A member of the senior leadership team has been appointed as the Designated Safeguarding Lead (DSL) who will take lead responsibility.
- On appointment, the DSL and deputy(ies) undertake appropriate Level 3 identified training every two years.
- All other staff have safeguarding training updated as appropriate; but at least annually
- Children are taught about safeguarding (including online safety) as part of a broad and balanced curriculum covering relevant issues to meet their needs including children who have recognised vulnerabilities.
- Appropriate safeguarding responses are in place for children who go missing from education.
- Appropriate online filtering and monitoring systems are in place
- The school contributes to early help arrangements and inter agency working and plans
- Any weaknesses in child protection procedures are remedied immediately

The Multi Academy Trust

The Trust Safeguarding Lead will ensure that:

- Support is given to the individual schools in ensuring that the relevant safeguarding and Child Protection policies and procedures are reviewed and updated in line with National and local requirements
- There are systems in place to support the effective management of safeguarding, especially the role of the DSL, training for all staff as supervision as appropriate
- There is, available to headteachers and DSLs, someone who can offer appropriate advice and support with safeguarding concerns, especially when these are complex
- Quality assurance processes are in place
- Information is presented to the Trust board in relation to Safeguarding in order that the Board can demonstrate it is discharging its safeguarding obligations appropriately
- There is support for headteachers with the management of allegations made against adults, staff or volunteers working with children

The Headteacher

The Headteacher will ensure that:

- The Child Protection and Safeguarding Policy and procedures are implemented and followed by all staff.
- Sufficient time, training, support, resources, including cover arrangements where necessary, is allocated to the DSL and deputy(ies) DSL(s) to carry out their roles effectively.
- They support and promote an open and positive safeguarding culture and ethos so that child/ren's wishes and feelings are taken into account when determining what action to take and what services to provide.
- Systems are in place for children to express their views and give feedback.
- The school follow the whistleblowing policy and procedures if an allegation is made against a member of staff supply staff or volunteer all staff, including liaising with the Local Authority Designated Officer (LADO) and referring anyone who has harmed or may pose a risk to a child to the Disclosure and Barring Service.
- Pupils are provided with opportunities throughout the curriculum to learn about safeguarding, including keeping themselves safe online.

The Designated Safeguarding Lead (DSL)

The DSL will ensure that they:

- Are available during school hours.
- Manage referrals and requests for support – to e.g. Children's Social Care, Channel programme, Disclosure and Barring service, the Police.
- Working with others – e.g. a point of contact with safeguarding partners, a source of support and advice for staff, to promote supportive engagement with parents and/or carers and the SLT/Governing body.
- Share information and managing the child protection files.
- Raise Safeguarding and Child Protection Awareness.
- Update training, knowledge and skills required to carry out the role of DSL.
- Provide support to staff.
- Hold and share information.
- Oversee and act upon filtering and monitoring reports and checks to these systems

The Deputy Designated Safeguarding Lead (DDSL)

The DDSL is / are trained to the same standard as the Designated Safeguarding Lead and, in the absence of the DSL, carries out those functions necessary to ensure the ongoing safety and protection of pupils. In the event of the long-term absence of the DSL the deputy will assume all of the functions above. Whilst the activities of the designated safeguarding lead can be delegated to appropriately trained deputies, the ultimate lead responsibility for child protection, as set out above, remains with the designated safeguarding lead, this lead responsibility should not be delegated.

All School Staff and Volunteers

All staff and volunteers will ensure that they consider, at all times, what is in the best interests of the child, and:

- Maintain an attitude of ‘it could happen here’ where safeguarding is concerned and know how to raise a concern about an adult working with children.
- Identify concerns early, provide help for children, promote children’s welfare and prevent concerns from escalating.
- Provide a safe environment in which children can learn.
- Know what to do if a child tells them they are being abused, exploited, or neglected.
- Be able to reassure victims that they are being taken seriously and that they will be supported and kept safe.
- Recognise the barriers for children when wanting to make a disclosure (verbal or non-verbal).
- Identify children who may benefit from early help, (providing support as soon as a problem emerges) and the part they play in these support plans.
- Raise any concerns for a child following the setting’s safeguarding policies and procedures
- Be aware of Local Authority referral processes and supporting social workers and other agencies following any referral.
- Be aware of systems within setting which support safeguarding e.g. Safeguarding Policy, Behaviour Policy, Code of Conduct, Children Missing Education, online filtering and monitoring
- Attend regular safeguarding and child protection training relevant to their role.
- Recognise that children missing, or absent from education can act as a vital warning sign to a range of safeguarding issues including neglect, sexual abuse and child sexual and criminal exploitation.
- Understand that inappropriate behaviour towards a child(ren) is unacceptable and that their conduct must be beyond reproach.
- That, under the Sexual Offences Act 2003, it is an offence for a person over the age of 18 to have a sexual relationship with a person under the age of 18, where that person is in a position of trust, even if the relationship is consensual. This means that any sexual activity between a member of the school or Trust staff and a pupil under 18 may be a criminal offence, even if that pupil is over the age of consent.

7 CONFIDENTIALITY AND INFORMATION SHARING

We recognise that to effectively meet a child’s needs, safeguard their welfare and protect them from harm the setting must contribute to inter-agency working in line with Working Together to Safeguard Children and share information between professionals and agencies where there are concerns.

All staff must be aware that they have a professional responsibility to share information with other agencies to safeguard children and that the Data Protection Act 2018 is not a barrier to sharing information where the failure to do so would place a child at risk of harm.

All staff must be aware that they cannot promise a child to keep secrets which might compromise the child's safety or wellbeing. However, we also recognise that all matters relating to child protection are personal to children and families. Therefore, in this respect they are confidential and the Headteacher or DSLs will only disclose information about a child to other members of staff on a need-to-know basis.

We will always undertake to share our intention to refer a child to the Local Authority Safeguarding Hub with their parents /carers unless to do so could put the child at greater risk of harm or impede a criminal investigation. If in doubt, we will contact the Local Authority Safeguarding Hub consultation line.

Child protection information will be stored and handled in line with the Data Protection Act 2018, the HM Government Information Sharing and Advice for practitioners providing safeguarding services to children, young people, parents and carers, May 2024 and DfE Data Protection in Schools.

In line with KCSiE all children's safeguarding files will be kept confidential and stored securely. Safeguarding files will be kept separate from other data and information relating to the child.

8 RECOGNISING AND RESPONDING TO SAFEGUARDING CONCERNS

Recognising safeguarding concerns:

Any child, in any family, in any school, could become a victim of abuse. Staff should always maintain an attitude of **"It could happen here"**. We also recognise that abuse, neglect and safeguarding issues are complex and are rarely standalone events that can be covered by one definition or label. Staff are aware that in most cases multiple issues will overlap one another.

- Abuse and neglect are forms of maltreatment of a child. Somebody may abuse or neglect a child by inflicting harm or by failing to act to prevent harm. Children may be abused in the family or in an institutional or community setting by those known to them or, more rarely, by others. Abuse can take place wholly online, or technology may be used to facilitate offline abuse. They may be abused by an adult or adults or by another child or children.
- Abuse and Neglect may also take place outside of the home, contextual safeguarding, and this may include (but not limited to), sexual exploitation criminal exploitation, serious youth violence, radicalisation.
- Staff are aware that behaviours linked to drug taking, alcohol abuse, truancy and sexting put children in danger and that safeguarding issues can manifest themselves via child-on-child abuse.

Further information about the four categories of abuse; physical, emotional, sexual and neglect, (familial and contextual) and indicators that a child may be being abused can be found in Keeping Children Safe in Education Part 1/Annex A/Annex B. There are also a number of specific safeguarding concerns that we recognise our pupils may experience.

<ul style="list-style-type: none"> • child missing from education • child missing from home or care • child sexual exploitation (CSE), child criminal exploitation (CCE) 	<ul style="list-style-type: none"> • gender-based violence/violence against women and girls (VAWG) • mental health difficulties • private fostering
---	--

<ul style="list-style-type: none"> • bullying including cyberbullying • domestic abuse • drugs • fabricated or induced illness • faith abuse • female genital mutilation (FGM) • forced marriage • gangs and youth violence 	<ul style="list-style-type: none"> • radicalisation • youth produced sexual imagery (sexting) • teenage relationship abuse • trafficking • child on child abuse • upskirting • serious violence • sexual harassment
---	---

- There will be occasions when staff may suspect that a pupil may be at risk but have no 'real' evidence. The pupil's behaviour may have changed, their artwork could be bizarre, and they may write stories or poetry that reveal confusion or distress, or physical or inconclusive signs may have been noticed.
- We recognise that the signs may be due to a variety of factors, for example, a parent has moved out, a pet has died, a grandparent is very ill, or an accident has occurred. However, they may also indicate a child is being abused or is in need of safeguarding.
- In these circumstances staff will try to give the child the opportunity to talk. It is fine for staff to ask the pupil if they are OK or if they can help in any way.

Responding to safeguarding concerns:

Following an initial conversation with the pupil, if the member of staff remains concerned, they should discuss their concerns with the DSL and put them in writing, see FLOW CHART A.

Records should include:

- a clear and comprehensive summary of the concern.
- details of how the concern was followed up and resolved.
- a note of any action taken, decisions reached and the outcome.

If the pupil does begin to reveal that they are being harmed, staff should follow the advice in FLOW CHART A and in the table below 'pupil making a disclosure'.

All concerns however small must be recorded and shared with the DSL as this information could provide the 'missing' piece of the bigger picture of the lived experience for the child.

Flow Chart A

Offer reassurance, listen and take seriously what is being said. Never promise to keep secrets or be persuaded by the child or their family not to take action.

Recognise that it is not your job to investigate, verify what is being said or examine the individual disclosing; this is statutory responsibility of the CP services and/or the police. It is however, important to ascertain the relevant information

Explain the process to the individual; that you will need to pass this information on, to whom, the reasons why and possible actions

Any concerns will be recorded, including the child's voice, body map (if necessary) and other relevant information in line with the school's recording procedure. Concerns may also be shared with the DSL/DDSL verbally, these conversations will also be recorded in writing

If a pupil discloses to a member of staff

- We recognise that it takes a lot of courage for a child to disclose they are being abused. They may feel ashamed, guilty or scared, their abuser may have threatened that something will happen if they tell, they may have lost all trust in adults or believe that what has happened is their fault. Sometimes they may not be aware that what is happening is abuse.
- A child who makes a disclosure may have to tell their story on a number of subsequent occasions to the police and/or social workers. Therefore, it is vital that their first experience of talking to a trusted adult is a positive one.

During their conversation with the pupil staff will;

- listen to what the child has to say and allow them to speak freely.
- remain calm and not overact or act shocked or disgusted – the pupil may stop talking if they feel they are upsetting the listener.
- reassure the child that it is not their fault and that they have done the right thing in telling someone.
- not be afraid of silences – staff must remember how difficult it is for the pupil and allow them time to talk.
- take what the child is disclosing seriously.
- ask open questions and avoid asking leading questions.
- avoid jumping to conclusions, speculation or make accusations.
- not automatically offer any physical touch as comfort. It may be anything but comforting to a child who is being abused.
- avoid admonishing the child for not disclosing sooner. Saying things such as 'I do wish you had told me about it when it started' may be the staff member's way of being supportive but may be interpreted by the child to mean they have done something wrong.

<ul style="list-style-type: none"> • tell the child what will happen next, that they cannot keep secrets and that information will be shared to ensure the right level of support is given.
Notifying Parents
<p>The school will normally seek to discuss any concerns about a pupil with their parents. This must be handled sensitively and normally the DSL/DDSL will make contact with the parent in the event of a concern, suspicion or disclosure of abuse of that the child has been harmed in some way.</p> <ul style="list-style-type: none"> • However, if the school believes that notifying parents could increase the risk to the child or exacerbate the problem e.g., familial sexual abuse, advice will first be sought from children's Local Authority Safeguarding Hub. • Where there are concerns about forced marriage or honour-based abuse parents should not be informed a referral is being made as to do so may place the child at a significantly increased risk. In some circumstances it would be appropriate to contact the police.
Making a referral or Request for Support
<ul style="list-style-type: none"> • Concerns about a child or a disclosure should be immediately raised with the DSL who will help decide whether a referral to children's Local Authority Safeguarding Hub or other support is appropriate in accordance with The Local Authority Threshold Tool. • If school are uncertain about whether a concern raised should be referred to the Local Authority Safeguarding Hub, a consultation will be sought with the Local Authority to seek further support and guidance. • If a referral is needed, the DSL should make this rapidly and have the necessary systems in place to enable this to happen. However, anyone can make a referral and if for any reason a staff member thinks a referral is appropriate and one hasn't been made, they can, and should, consider making a referral themselves. • The child (subject to their age and understanding) and the parents will be told that a referral is being made, unless to do so would increase the risk to the child. If after a referral the child's situation does not appear to be improving the designated safeguarding lead (or the person that made the referral) should press for re-consideration to ensure their concerns have been addressed, and most importantly the child's situation improves. • If a child is in immediate danger or is at risk of harm a referral should be made to children's Local Authority Safeguarding Hub and/or the police immediately. Anybody can make a referral. • Where referrals are not made by the DSL, the DSL should be informed as soon as possible.
Supporting our Staff
<ul style="list-style-type: none"> • We recognise that staff working in the school who have become involved with a child who has suffered harm or appears to be likely to suffer harm may find the situation stressful and upsetting. • We will support such staff by providing an opportunity to talk through their anxieties with the DSLs and to seek further support as appropriate. • We also provide free and confidential access to support for staff through Health Assure. Further information regarding this support can be accessed through the Headteacher in each school

9 CHILDREN WHO ARE PARTICULARLY VULNERABLE

We recognise that some children are more vulnerable to abuse, neglect, exploitation and contextual safeguarding concerns and that additional barriers exist when recognising abuse for some children. We understand that this increase in risk is due more to societal attitudes and assumptions or child

protection procedures which fail to acknowledge children's diverse circumstances, rather than the individual child's personality, impairment, or circumstances.

In some cases, possible indicators of abuse such as a child's mood, behaviour or injury might be assumed to relate to the child's impairment or disability rather than giving a cause for concern. Or a focus may be on the child's disability, special educational needs or situation without consideration of the full picture. In other cases, such as bullying, the child may be disproportionately impacted by the behaviour without outwardly showing any signs that they are experiencing it.

Some children may also find it harder to disclose abuse due to communication barriers, lack of access to a trusted adult or not being aware that what they are experiencing is abuse.

Any child may benefit from early help, but all school and college staff should be particularly alert to the potential need for early help for a child who:

- Is disabled and has specific additional needs.
- Has special educational needs (whether or not they have a statutory education, health and care plan).
- Is a young carer.
- Is showing signs of being drawn in to anti-social or criminal behaviour, including gang involvement and association with organised crime groups.
- Is frequently missing/goes missing from education, care or from home.
- Is misusing drugs or alcohol themselves.
- Is at risk of modern slavery, trafficking or exploitation.
- Is in a family circumstance presenting challenges for the child, such as substance abuse, adult mental health problems or domestic abuse.
- Has returned home to their family from care.
- Is showing early signs of abuse and/or neglect and/or exploitation.
- Is at risk of being radicalised or exploited.
- Is a privately fostered child.
- Has an imprisoned parent.
- Is experiencing mental health, wellbeing difficulties.
- Is persistently absent from education (including persistently absent for part of the school day).
- Has experienced multiple suspensions, is at risk of being permanently excluded from schools, colleges and in alternative provision or a pupil referral unit.
- Is at risk of 'honour' based abuse such as FGM or forced marriage.

10 WHISTLEBLOWING

We recognise that children cannot be expected to raise concerns in an environment where staff fail to do so.

All staff should be aware of their duty to raise concerns, where they exist, about the management of child protection, which may include the attitude or actions of colleagues, poor or unsafe practice and potential failures in the school's safeguarding arrangements. If it becomes necessary to consult outside the setting, they should speak in the first instance, to the LADO following the Whistleblowing Policy.

The NSPCC whistleblowing helpline is available for staff who do not feel able to raise concerns regarding child protection failures internally. Staff can call: 0800 028 0285 line is available from 8:00 AM to 8:00 PM, Monday to Friday and email: help@nspcc.org.uk

Whistleblowing re. the Headteacher should be made to Chair of the Governing Body or to the CEO of the Trust, or if unavailable the Deputy Chief Executive Officer or relevant Director of Education whose contact details are readily available to staff.

11 ALLEGATIONS AGAINST STAFF

The following section should be read in conjunction with the Managing Allegations Against Staff policy.

All staff should take care not to place themselves in a vulnerable position with a child. It is always advisable for interviews or work with individual children or parents/carers to be conducted in view of other adults.

All employees and volunteers must record, in writing, any concerns they have about the practice or behaviour of a member of staff and share it with the headteacher (or equivalent member of staff)

The headteacher will make an assessment to determine if the matter is a 'low level concern' or an 'allegation' (i.e. does the concern may meet the threshold of harm)

The Local Authority Designated Officer (LADO) will be contacted for all allegations and the relevant guidance will be followed. If the allegation is against the headteacher, then the person receiving the allegation will contact the Chair of Governors and/or the CEO (or those acting as their deputy)

Where concerns are considered to be 'low-level' by the headteacher, they should be managed in line with part 4 of KCSiE and the wider policies/procedures. The DSL may be involved in this process.

If the concern relates to the headteacher, the person receiving the information will immediately inform the CEO (or deputy) who will consult with the LADO as above without notifying the headteacher first.

It is rare for a child to make an entirely false or malicious allegation, although misunderstandings and misinterpretations of events do happen.

A child may also make an allegation against an innocent party because they are too afraid to name the real perpetrator. Even so, we must accept that some professionals do pose a serious risk to pupils and we must act on every allegation.

Staff who are the subject of an allegation have the right to have their case dealt with fairly, quickly and consistently and to be kept informed of its progress.

Suspension is not the default option and alternatives to suspension will always be considered. In some cases, staff may be suspended where this is deemed to be the best way to ensure that children are protected. In the event of suspension, the school will provide support and a named contact for the member of staff.

Staff, parents and governors are reminded that publication of material that may lead to the identification of a teacher who is the subject of an allegation is prohibited by law. Publication includes verbal conversations or writing, including content placed on social media sites.

Allegations concerning staff who no longer work at the school, or historical allegations will be reported to the police.

Where an allegation is made against a member of staff working within EYFS, the school will follow the normal procedures. Should the allegation meet the threshold of harm (or where there is any doubt), the school will contact the LADO in the usual way. In consultation with the LADO, the school will also inform OFSTED as required in the [Early Years Foundation Stage Framework – School Based Providers \(DfE\)](#)

For more detailed information relating to this, consult the Managing Allegations Against Staff Policy.

12 REASONABLE FORCE AND PHYSICAL INTERVENTION

We acknowledge that staff must only ever use physical intervention as a last resort, when a child is endangering him/herself, others or property, and that at all times it must be the minimal force necessary to prevent injury to another person.

We follow the statutory guidance in regards of the use of reasonable force and other restrictive interventions in schools (published in February 2025).

All staff are provided with guidance relating to the use of reasonable force. In roles where the use of reasonable force/physical intervention may be more likely, staff will receive appropriate training.

All situations where the use of reasonable force or a restrictive intervention goes beyond appropriate physical contact will be referred to as a 'significant incident' as outlined in the statutory guidance. All significant incidents will be recorded by the school and reported to each parent/carers with parental responsibility (unless there is a safeguarding reason not to) as soon as possible.

Governors will review the records of reasonable force in order to carry out their statutory responsibilities.

We understand that physical intervention of a nature which causes injury or distress to a child may be considered under child protection or disciplinary procedures.

We recognise that touch is appropriate in the context of working with children, and all staff have been given 'Safe Practice' guidance to ensure they are clear about their professional boundary.

13 APPENDIX

13.1 Categories of Abuse

Categories of Abuse:

- Physical Abuse
- Emotional Abuse (including Domestic Abuse)
- Sexual Abuse (including child sexual exploitation)
- Neglect

Signs of Abuse in Children:

The following non-specific signs may indicate something is wrong:

- Significant change in behaviour
- Extreme anger or sadness
- Aggressive and attention-needing behaviour
- Suspicious bruises with unsatisfactory explanations
- Lack of self-esteem
- Self-injury
- Depression and/or anxiousness
- Age-inappropriate sexual behaviour
- Child Sexual Exploitation
- Criminality
- Substance abuse
- Mental health problems
- Poor attendance
- Unexplainable and/or persistent absences from education

Risk Indicators

The factors described in this section are frequently found in cases of child abuse. Their presence is not proof that abuse has occurred, but:

- Must be regarded as indicators of the possibility of significant harm
- Justifies the need for careful assessment and discussion with designated / named / lead person, manager, (or in the absence of all those individuals, an experienced colleague)
- May require consultation with and / or referral to Local Authority Children's Services

The absence of such indicators does not mean that abuse or neglect has not occurred.

In an abusive relationship the child may:

- Appear frightened of the parent(s)/ carers.
- Act in a way that is inappropriate to her/his age and development (though full account needs to be taken of different patterns of development and specific needs)

The parent or carer may:

- Persistently avoid child health promotion services and treatment of the child's episodic illnesses
- Have unrealistic expectations of the child
- Frequently complain about/to the child and may fail to provide attention or praise (high criticism/low warmth environment)
- Be absent or misusing substances
- Persistently refuse to allow access on home visits
- Be involved in domestic abuse

Staff should be aware of the potential risk to children when individuals, previously known or suspected to have abused children, move into the household.

Recognising Physical Abuse

The following are often regarded as indicators of concern:

- An explanation which is inconsistent with an injury
- Several different explanations provided for an injury
- Unexplained delay in seeking treatment
- The parents/carers are uninterested or undisturbed by an accident or injury
- Parents are absent without good reason when their child is presented for treatment
- Repeated presentation of minor injuries (which may represent a "cry for help" and if ignored could lead to a more serious injury)
- Family use of different doctors and A&E departments
- Reluctance to give information or mention previous injuries

Bruising

Children can have accidental bruising, but the following must be considered as non-accidental unless there is evidence, or an adequate explanation provided:

- Any bruising to a pre-crawling or pre-walking baby
- Bruising in or around the mouth, particularly in small babies which may indicate force feeding
- Two simultaneous bruised eyes, without bruising to the forehead, (rarely accidental, though a single bruised eye can be accidental or abusive)
- Repeated or multiple bruising on the head or on sites unlikely to be injured accidentally
- Variation in colour possibly indicating injuries caused at different times
- The outline of an object used e.g. belt marks, handprints or a hairbrush
- Bruising or tears around, or behind, the earlobe/s indicating injury by pulling or twisting
- Bruising around the face
- Grasp marks on small children
- Bruising on the arms, buttocks and thighs may be an indicator of sexual abuse

Mongolian Blue Spot: Bruising in non-mobile children is rare and may indicate abuse or neglect. Birth marks, especially Mongolian Blue Spots, can mimic bruising. Mongolian Blue Spot can be identified (see description below), however if in any doubt as to the cause of the bruise refer to [Southwest Child Protection Procedures](#) Local Authority guidance and consultation.

- Areas of skin hyperpigmentation – flat, not raised, swollen or inflamed
- Not painful to touch
- Usually present at birth/ develop soon afterwards
- Will not change in shape or colour within a few days
- Normally uniform blue/ grey in colour across the mark
- Common in African, Middle Eastern, Mediterranean and Asian children
- While most occur at the lower back and buttocks, they can appear anywhere (e.g. back of shoulder or limb). Scalp/ face rarely affected
- Can be single/ multiple, vary in size, but mostly few centimetres diameter
- Gradually fade over many year

Bite Marks

Bite marks can leave clear impressions of the teeth. Human bite marks are oval or crescent shaped. Those over 3 cm in diameter are more likely to have been caused by an adult or older child.

A medical opinion should be sought where there is any doubt over the origin of the bite.

Burns and Scalds

It can be difficult to distinguish between accidental and non-accidental burns and scalds and will always require experienced medical opinion. Any burn with a clear outline may be suspicious e.g.:

- Circular burns from cigarettes (but may be friction burns if along the bony protuberance of the spine)
- Linear burns from hot metal rods or electrical fire elements
- Burns of uniform depth over a large area
- Scalds that have a line indicating immersion or poured liquid (a child getting into hot water is his/her own accord will struggle to get out and cause splash marks)
- Old scars indicating previous burns/scalds which did not have appropriate treatment or adequate explanation

Scalds to the buttocks of a small child, particularly in the absence of burns to the feet, are indicative of dipping into a hot liquid or bath.

Fractures

Fractures may cause pain, swelling and discolouration over a bone or joint. Non-mobile children rarely sustain fractures.

There are grounds for concern if:

- The history provided is vague, non-existent or inconsistent with the fracture type
- There are associated old fractures
- Medical attention is sought after a period of delay when the fracture has caused symptoms such as swelling, pain or loss of movement
- There is an unexplained fracture in the first year of life

Scars

A large number of scars or scars of different sizes or ages, or on different parts of the body, may suggest abuse.

Recognising Emotional Abuse

Emotional abuse may be difficult to recognise, as the signs are usually behavioural rather than physical. The manifestations of emotional abuse might also indicate the presence of other kinds of abuse. The indicators of emotional abuse are often also associated with other forms of abuse.

The following may be indicators of emotional abuse:

- Developmental delay
- Abnormal attachment between a child and parent/carer e.g. anxious, indiscriminate or not attachment
- Indiscriminate attachment or failure to attach
- Aggressive behaviour towards others
- Scapegoated within the family
- Frozen watchfulness, particularly in pre-school children
- Low self-esteem and lack of confidence
- Withdrawn or seen as a “loner” – difficulty relating to others

Recognising Signs of Sexual Abuse

Boys and girls of all ages may be sexually abused and are frequently scared to say anything due to guilt and/or fear. This is particularly difficult for a child to talk about, and full account should be taken of the cultural sensitivities of any individual child/family.

Recognition can be difficult, unless the child discloses and is believed. There may be no physical signs and indications are likely to be emotional/behavioural.

Some behavioural indicators associated with this form of abuse are:

- Inappropriate sexualised conduct
- Sexually explicit behaviour, play or conversation, inappropriate to the child's age
- Continual and inappropriate or excessive masturbation
- Self-harm (including eating disorder), self-mutilation and suicide attempts
- Involvement in prostitution or indiscriminate choice of sexual partners
- An anxious unwillingness to remove clothes e.g. for sports events (but this may be related to cultural norms or physical difficulties)

Some physical indicators associated with this form of abuse are:

- Pain or itching of genital area
- Blood on underclothes
- Pregnancy in a younger girl where the identity of the father is not disclosed
- Physical symptoms such as injuries to the genital or anal area, bruising to buttocks, abdomen and thighs, sexually transmitted disease, presence of semen on vagina, anus, external genitalia or clothing

Recognising Neglect

Evidence of neglect is built up over a period of time and can cover different aspects of parenting. Indicators include:

- Failure by parents or carers to meet the basic essential needs e.g. adequate food, clothes, warmth, hygiene and medical care
- A child seen to be listless, apathetic and irresponsible with no apparent medical cause
- Failure of child to grow within normal expected pattern, with accompanying weight loss
- Child thrives away from home environment
- Child frequently absent from school
- Child left with adults who are intoxicated or violent
- Child abandoned or left alone for excessive periods

13.2 Anti-Bullying/Cyberbullying

Our school policy on anti-bullying is set out in our school behaviour policy and acknowledges that to allow or condone bullying may lead to consideration under child protection procedures. This includes all forms e.g. cyber, racist, homophobic and gender related bullying. We keep a record of known bullying incidents which is shared with and analysed by the governing body. All staff are aware that children with SEND and / or differences/perceived differences are more susceptible to being bullied / victims of child abuse.

If the bullying is particularly serious, or the anti-bullying procedures are seen to be ineffective, the Headteacher and the DSL will consider implementing child protection procedures.

The subject of bullying is addressed at regular intervals in PHSE education.

13.3 Bullying, Prejudice and Racist Incidents

Our policy on racist incidents is set out separately and acknowledges that repeated prejudice or racist incidents or a single serious incident may lead to consideration under child protection procedures. We keep a record of bullying, prejudice and racist incidents and report² them to the Local Authority.

13.4 Radicalisation and Extremism

The Prevent Duty for England and Wales (2023)³ under section 26 of the Counter-Terrorism and Security Act 2015 places a duty on education and other children's services to have due regard to the need to prevent people from being drawn into terrorism.

Extremism is defined as 'vocal or active opposition to fundamental British values, including democracy, the rule of law, individual liberty and mutual respect and tolerance of different faiths and beliefs. We also include in our definition of extremism calls for the death of members of our armed forces, whether in this country or overseas.

Some children are at risk of being radicalised; adopting beliefs and engaging in activities which are harmful, criminal or dangerous.

² [Bullying, prejudice and racism incident reporting \(BPRI\) Devon County Council](#)

³ [The Prevent duty guidance](#)

School is clear that exploitation of vulnerable children and radicalisation should be viewed as a safeguarding concern and follows the Department for Education guidance for schools and childcare providers on preventing children and young people from being drawn into terrorism⁴.

School seeks to protect children and young people against the messages of all violent extremism including, but not restricted to, those linked to Islamist ideology, or to Far Right / Neo Nazi / White Supremacist ideology, Irish Nationalist and Loyalist paramilitary groups, and extremist Animal Rights movements.

School staff receive training to help identify early signs of radicalisation and extremism. Indicators of vulnerability to radicalisation are in detailed in the section below.

Opportunities are provided in the curriculum to enable pupils to discuss issues of religion, ethnicity and culture and the school follows the DfE advice Promoting Fundamental British Values as part of SMSC (spiritual, moral, social and cultural education) in Schools (2014)⁵.

The school governors, the Headteacher and the Designated Safeguarding Lead (DSL) will assess the level of risk within the school and put actions in place to reduce that risk. Risk assessment may include the use of school premises by external agencies, anti-bullying policy and other issues specific to the school's profile, community and philosophy.

When any member of staff has concerns that a pupil may be at risk of radicalisation or involvement in terrorism, they should speak with the DSL. They should then follow normal safeguarding procedures. If the matter is urgent then the Police must be contacted by dialling 999. In non-urgent cases where police advice is sought then dial 101 or the national police Prevent advice line on 0800 011 3764.

Indicators Of Vulnerability to Radicalisation

1. Radicalisation refers to the process by which a person comes to support terrorism and forms of extremism leading to terrorism.
2. Extremism is defined by the Government in the Prevent Strategy as:

Vocal or active opposition to fundamental British values, including democracy, the rule of law, individual liberty and mutual respect and tolerance of different faiths and beliefs. We also include in our definition of extremism calls for the death of members of our armed forces, whether in this country or overseas.

3. Extremism is defined by the Crown Prosecution Service as:
The demonstration of unacceptable behaviour by using any means or medium to express views which:
 - Encourage, justify or glorify terrorist violence in furtherance of particular beliefs.
 - Seek to provoke others to terrorist acts.
 - Encourage other serious criminal activity or seek to provoke others to serious criminal acts; or

⁴ [The Prevent duty: Safeguarding learners vulnerable to radicalisation.](#)

⁵ [Promoting Fundamental British Values](#)

- Foster hatred which might lead to inter-community violence in the UK.

There is no such thing as a “typical extremist”: those who become involved in extremist actions come from a range of backgrounds and experiences, and most individuals, even those who hold radical views, do not become involved in violent extremist activity.

Pupils may become susceptible to radicalisation through a range of social, personal and environmental factors - it is known that violent extremists exploit vulnerabilities in individuals to drive a wedge between them and their families and communities. It is vital that school staff are able to recognise those vulnerabilities.

Indicators of vulnerability include:

- Identity Crisis – the student / pupil is distanced from their cultural / religious heritage and experiences discomfort about their place in society.
- Personal Crisis – the student / pupil may be experiencing family tensions; a sense of isolation; and low self-esteem; they may have dissociated from their existing friendship group and become involved with a new and different group of friends; they may be searching for answers to questions about identity, faith and belonging.
- Personal Circumstances – migration; local community tensions; and events affecting the student / pupil’s country or region of origin may contribute to a sense of grievance that is triggered by personal experience of racism or discrimination or aspects of Government policy.
- Unmet Aspirations – the student / pupil may have perceptions of injustice; a feeling of failure; rejection of civic life.
- Experiences of Criminality – which may include involvement with criminal groups, imprisonment, and poor resettlement / reintegration.
- Special Educational Need – students / pupils may experience difficulties with social interaction, empathy with others, understanding the consequences of their actions and awareness of the motivations of others.

However, this list is not exhaustive, nor does it mean that all young people experiencing the above are at risk of radicalisation for the purposes of violent extremism.

More critical risk factors could include:

- Being in contact with extremist recruiters.
- Accessing violent extremist websites, especially those with a social networking element.
- Possessing or accessing violent extremist literature.
- Using extremist narratives and a global ideology to explain personal disadvantage.
- Justifying the use of violence to solve societal issues.
- Joining or seeking to join extremist organisations; and
- Significant changes to appearance and / or behaviour.
- Experiencing a high level of social isolation resulting in issues of identity crisis and / or personal crisis.

The Prevent duty ensures schools and colleges have 'due regard' to the need to prevent people from being drawn into terrorism.

Channel is the voluntary, confidential support programme which focuses on providing support at an early stage to individuals that have been identified as being vulnerable to radicalisation. Prevent referrals may be passed to the multi-agency Channel panel to determine whether individuals require support.

[The Prevent Duty can be accessed via this link.](#) (School specific para's 57-76)

[The Prevent duty: safeguarding learners vulnerable to radicalisation.](#)

[The Prevent Duty in higher education \(HE\): training and guidance for practitioners.](#)

Guidance on Channel <https://www.gov.uk/government/publications/channel-guidance>

Further information can be obtained from the Home Office website.

13.5 Domestic Abuse (inc Operation Encompass)

Domestic abuse represents one quarter of all violent crime. It is actual or threatened physical, emotional, psychological or sexual abuse. It involves the use of power and control by one person over another. It occurs regardless of race, ethnicity, gender, class, sexuality, age, and religion, mental or physical ability. Domestic abuse can also involve other types of abuse.

We use the term domestic abuse to reflect that a number of abusive and controlling behaviours are involved beyond violence.

How does it affect children?

Domestic abuse can encompass a wide range of behaviours and may be a single incident or a pattern of incidents. That abuse can be, but is not limited to, psychological, physical, sexual, financial or emotional. Children can be victims of domestic abuse. They may see, hear, or experience the effects of abuse at home and/or suffer domestic abuse in their own intimate relationships (teenage relationship abuse). All of which can have a detrimental and long-term impact on their health, well-being, development, and ability to learn. In some cases children may blame themselves for the abuse or may have had to leave the family home as a result. Children who witness domestic abuse are at risk of significant harm.

What are the signs to look out for?

Children affected by domestic abuse reflect their distress in a variety of ways. They may change their usual behaviour and become withdrawn, tired, start to wet the bed and have behavioural difficulties. They may not want to leave their house or may become reluctant to return. Others will excel, using their time in your care as a way to escape from their home life. None of these signs are exclusive to domestic abuse so when you are considering changes in behaviours and concerns about a child, think about whether domestic abuse may be a factor.

What should I do if I suspect a family is affected by domestic abuse?

Contact: <https://new.devon.gov.uk/dsva/> The Domestic and Sexual Violence DCC website 0345 155 1074

If you are concerned about a child or young person in Devon please contact the [DCC - Request for support \(outsystemsenterprise.com\)](#) on 0345 155 1071

If you are concerned about an adult (aged 16+) in Devon please complete the [Risk Identification Checklist](#) (Safelives DASH RIC) to identify the level of risk which support service to refer them too, and follow the advice on the [MARAC page](#) for all levels of risk.

If you are concerned about a vulnerable adult please contact [Adult Social Care](#) on 03451551007 (9am – 5pm Monday to Thursday, Friday 9am – 4.30pm and 9am – 5pm on Saturdays), alternatively, you can [download a Word version of the report a safeguarding concern form](#) and email it to adultsc.safeguardingadultservices-mailbox@devon.gov.uk (Devon Safeguarding Adults Service). In an emergency, please contact the Emergency Duty Service 0345 6000388.

FearFree Support Service is a charity delivering support services to women and young people experiencing the trauma of domestic abuse and sexual violence. Telephone 0345 155 1074 or email admin.devon@fearfree.org.uk

SAFE (Stop Abuse For Everyone) is a charity based in Exeter providing help and support to children and families who have experienced domestic abuse and violence. Telephone 030 30 30 0112 or visit the website [SAFE Foundation \(wearesafe.org.uk\)](http://wearesafe.org.uk)

National Domestic Abuse Helpline Refuge runs the National Domestic Abuse Helpline, available 24hour a day 0808 2000 247 and its website offers guidance and support for potential victims.

Refuge: <https://www.refuge.org.uk/>

Operation Encompass

Operation Encompass helps police and schools work together to provide emotional and practical help for children. Police will inform the ‘key adult’ within school if they have been called to an incident of domestic abuse, where there are children in the household before registration the next day.

13.6 Exploitation (incl. Child Sex Exploitation, Child Criminal Exploitation & County Lines)

Both CSE and CCE are forms of abuse and both occur where an individual or group takes advantage of an imbalance in power to coerce, manipulate or deceive a child into sexual or criminal activity. This power imbalance could be due to age, gender, sexual identity, cognitive ability, physical strength, status, and /or access to economic or other resources. The abuse could be linked to an exchange for something the victim perceives that they need or want and/or will be to the financial benefit or other advantage (such as increase status) of the perpetrator or facilitator.

The abuse can be perpetrated by individuals or groups, males or females, and adults or children (who themselves may be experiencing exploitation). The abuse can be a one-off occurrence or a series of incidents over time and range from opportunistic to complex organised abuse. It may involve force and/or enticement-based methods of compliance and may, or may not, be accompanied by violence or threats of violence.

Victims can be exploited even when the activity appears consensual, and it should be noted exploitation as well as being physical can be facilitated and/or take place online. The experience of girls who are criminally exploited can be very different from boys, the indicators may not be the same and both boys and girls that are being criminally exploited may be at higher risk of sexual exploitation.

Any concerns that a child is being or is at risk of being sexually or criminally exploited should be passed without delay to the DSL. We aware there is a clear link between regular school absence/truanting, CSE and CCE. Staff should consider a child to be at potential CSE/CCE risk in the case of regular school absence/truanting and make reasonable enquiries with the child and parents to assess this risk.

The DSL will use the appropriate Local Authority Assessment tool e.g. the Exploitation Toolkit, the Devon Children's Safeguarding Partnership Adolescent Safety Framework Safer Me Assessment⁶ on all occasions when there is a concern that a child is being or is at risk of being sexually or criminally exploited or where indicators have been observed that are consistent with a child who is being or who is at risk of being sexually or criminally exploited. These assessments will indicate to the DSL whether e.g. a Safer Me Early Help approach or referral to the Exploitation Hub/Local Authority Safeguarding Hub is required. If the DSL is in any doubt, they will contact the Safeguarding Hub consultation.

In all cases if the assessment identified any level of concern the DSL should contact their local MACE⁷ (Missing and Child Exploitation) and email the completed (e.g. Safer Me) assessment along with a Safeguarding Hub enquiry form. If a child is in immediate danger the police should be called on 999.

School is aware that often a child is not able to recognise the coercive nature of the abuse and does not see themselves as a victim. As a consequence, the child may resent what they perceive as interference by staff. However, staff must act on their concerns as they would for any other type of abuse.

School includes the risks of sexual and criminal exploitation in the PHSE and RSE curriculum. Pupils will be informed of the grooming process and how to protect themselves from people who may potentially be intent on causing harm. They will be supported in terms of recognising and assessing risk in relation to CSE/CCE, including online, and knowing how and where to get help.

The following list of indicators is not exhaustive or definitive, but it does highlight common signs which can assist professionals in identifying children or young people who may be victims of sexual or criminal exploitation.

Signs include:

- Going missing from home or school
- Regular school absence/truanting
- Underage sexual activity
- Inappropriate sexual or sexualised behaviour
- Sexually risky behaviour, 'swapping' sex
- Repeat sexually transmitted infections
- In girls, repeat pregnancy, abortions, miscarriage
- Receiving unexplained gifts or gifts from unknown sources
- Having multiple mobile phones and worrying about losing contact via mobile

⁶ DevonSCP Adolescent Safety Framework info and Safer Me Assessment

⁷ DevonSCP MACE guidance

Gang violence: <https://www.nspcc.org.uk/what-is-child-abuse/types-of-abuse/gangs-criminal-exploitation/iolence>
<https://www.nspcc.org.uk/what-is-child-abuse/types-of-abuse/gangs-criminal-exploitation/>

- Online safety concerns such as youth produced sexual imagery or being coerced into sharing explicit images.
- Having unaffordable new things (clothes, mobile) or expensive habits (alcohol, drugs)
- Changes in the way they dress
- Going to hotels or other unusual locations to meet friends
- Seen at known places of concern
- Moving around the country, appearing in new towns or cities, not knowing where they are
- Getting in/out of different cars driven by unknown adults
- Having older boyfriends or girlfriends
- Contact with known perpetrators
- Involved in abusive relationships, intimidated and fearful of certain people or situations
- Hanging out with groups of older people, or anti-social groups, or with other vulnerable peers
- Associating with other young people involved in sexual exploitation
- Recruiting other young people to exploitative situations
- Truancy, exclusion, disengagement with school, opting out of education altogether
- Unexplained changes in behaviour or personality (chaotic, aggressive, sexual)
- Mood swings, volatile behaviour, emotional distress
- Self-harming, suicidal thoughts, suicide attempts, overdosing, eating disorders
- Drug or alcohol misuse
- Getting involved in crime
- Police involvement, police records
- Involved in gangs, gang fights, gang membership
- Injuries from physical assault, physical restraint, sexual assault.

Child Criminal Exploitation can include children being forced or manipulated into transporting drugs or money through county lines, working in cannabis factories, shoplifting, or pickpocketing. They can also be forced or manipulated into committing vehicle crime or threatening/committing serious violence to others.

County lines is a term used to describe gangs and organised criminal networks involved in the exporting of illegal drugs (primarily crack cocaine and heroin) into one or more importing areas (within the UK), using dedicated mobile phone lines or other form of 'deal line.'

Exploitation is an integral part of the county lines offending model with children and vulnerable adults being exploited to move (and store) drugs and money. The same grooming models used to coerce, intimidate, and abuse individuals for sexual and criminal exploitation are also used for grooming vulnerable individuals for county lines.

CSE is a form of child sexual abuse. CSE can occur over time or be a one-off occurrence. CSE can affect any child, who has been coerced into engaging in sexual activities. This includes 16 and 17-year-olds who can legally consent to have sex.

Sexual abuse may involve physical contact, including assault by penetration (for example, rape or oral sex) or nonpenetrative acts such as masturbation, kissing, rubbing, and touching outside clothing. It may include non-contact activities, such as involving children in the production of sexual images,

forcing children to look at sexual images or watch sexual activities, encouraging children to behave in sexually inappropriate ways or grooming a child in preparation for abuse including via the internet.

For further information on signs of a child's involvement in sexual exploitation: [Child sexual exploitation: guide for practitioners](#)

For further information on County Lines: [Criminal exploitation of children and vulnerable adults: county lines guidance](#)

13.7 Female Genital Mutilation (FGM)

It is essential that staff are aware of FGM practices and the need to look for signs, symptoms, and other indicators of FGM. If a member of staff, in the course of their work, discovers that an act of FGM appears to have been carried out, the member of staff must report this to the Police.

Female Genital Mutilation (FGM) is illegal in England and Wales under the FGM Act 2003 ("the 2003 Act"). It is a form of child abuse and violence against women. FGM comprises all procedures involving partial or total removal of the external female genitalia for non-medical reasons.

Section 5B of the 2003 Act¹ introduces a mandatory reporting duty which requires regulated health and social care professionals and teachers in England and Wales to report 'known' cases of FGM in under 18s which they identify in the course of their professional work to the police. The duty came into force on 31 October 2015.

What is FGM?

It involves procedures that intentionally alter/injure the female genital organs for non-medical reasons.

4 types of procedure:

Type 1 Clitoridectomy – partial/total removal of clitoris

Type 2 Excision – partial/total removal of clitoris and labia minora

Type 3 Infibulation entrance to vagina is narrowed by repositioning the inner/outer labia

Type 4 all other procedures that may include: pricking, piercing, incising, cauterising and scraping the genital area.

Why is it carried out?

Belief that:

- FGM brings status/respect to the girl – social acceptance for marriage
- Preserves a girl's virginity
- Part of being a woman / rite of passage
- Upholds family honour
- Cleanses and purifies the girl
- Gives a sense of belonging to the community
- Fulfils a religious requirement
- Perpetuates a custom/tradition
- Helps girls be clean / hygienic
- Is cosmetically desirable
- Mistakenly believed to make childbirth easier

Is FGM legal?

FGM is internationally recognised as a violation of human rights of girls and women. Female Genital Mutilation (FGM) is illegal in England and Wales under the FGM Act (2003). It is a form of child abuse and violence against women. A mandatory reporting duty requires teachers to report 'known' cases of FGM in under 18s, which are identified in the course of their professional work, to the police⁸.

The duty applies to all persons in our School who is employed or engaged to carry out 'teaching work' in the school, whether or not they have qualified teacher status. The duty applies to the individual who becomes aware of the case to make a report. It should not be transferred to the Designated Safeguarding Lead; however, the DSL should be informed.

If a teacher is informed by a girl under 18 that an act of FGM has been carried out on her, or a teacher observes physical signs which appear to show that an act of FGM has been carried out on a girl under 18, and they have no reason to believe the act was necessary for the girl's physical or mental health or for purposes connected with labour or birth, the teacher should personally make a report to the police force in which the girl resides by calling 101. The report should be made by the close of the next working day.

School staff are trained to be aware of risk indicators of FGM identified in this section of the Appendix. Concerns about FGM outside of the mandatory reporting duty should be reported as per our school's child protection procedures. Staff should be particularly alert to suspicions or concerns expressed by female pupils about going on a long holiday during the summer vacation period. There should also be consideration of potential risk to other girls in the family and practicing community.

Where there is a risk to life or likelihood of serious immediate harm the teacher should report the case immediately to the police, including dialling 999 if appropriate.

There are no circumstances in which a teacher or other member of staff should examine a girl.

Circumstances and occurrences that may point to FGM happening are:

- Child talking about getting ready for a special ceremony
- Family taking a long trip abroad
- Child's family being from one of the 'at risk' communities for FGM (Kenya, Somalia, Sudan, Sierra Leon, Egypt, Nigeria, Eritrea as well as non-African communities including Yemeni, Afghani, Kurdistan, Indonesia and Pakistan)
- Knowledge that the child's sibling has undergone FGM
- Child talks about going abroad to be 'cut' or to prepare for marriage

Signs that may indicate a child has undergone FGM:

- Prolonged absence from school and other activities
- Behaviour changes on return from a holiday abroad, such as being withdrawn and appearing subdued
- Bladder or menstrual problems
- Finding it difficult to sit still and looking uncomfortable
- Complaining about pain between the legs

⁸ [FGM procedural information](#)

- Mentioning something somebody did to them that they are not allowed to talk about
- Secretive behaviour, including isolating themselves from the group
- Reluctance to take part in physical activity
- Repeated urinal tract infection
- Disclosure

The 'One Chance' rule

As with Forced Marriage (outlined below) there is the 'One Chance' rule. It is essential that settings /schools/colleges take action **without delay** and make a referral to children's services.

13.8 Forced Marriage

A forced marriage is a marriage in which one or both people do not (or in cases of people with learning disabilities cannot) consent to the marriage but are coerced into it. Coercion may include physical, psychological, financial, sexual, and emotional pressure. It may also involve physical or sexual violence and abuse.

Forced marriage is an appalling and indefensible practice and is recognised in the UK as a form of violence against women and men, domestic/child abuse, and a serious abuse of human rights. Since June 2014 forcing someone to marry has become a criminal offence in England and Wales under the Anti-Social Behaviour, Crime and Policing Act 2014.

A forced marriage is not the same as an arranged marriage which is common in several cultures. The families of both spouses take a leading role in arranging the marriage but the choice of whether or not to accept the arrangement remains with the prospective spouses.

School staff should never attempt to intervene directly as a school or through a third party. Contact should be made with the Local Authority Safeguarding Hub.

13.9 Honour-based Abuse

Honour based abuse (HBV) can be described as a collection of practices, which are used to control behaviour within families or other social groups to protect perceived cultural and religious beliefs and/or honour. Such abuse can occur when perpetrators perceive that a relative has shamed the family and/or community by breaking their honour code.

Honour based abuse might be committed against people who.

- become involved with a boyfriend or girlfriend from a different culture or religion.
- want to get out of an arranged marriage.
- want to get out of a forced marriage.
- wear clothes or take part in activities that might not be considered traditional within a particular culture.

It is a violation of human rights and may be a form of domestic and/or sexual abuse. There is no, and cannot be, honour or justification for abusing the human rights of others.

13.10 One Chance Rule

All staff are aware of the 'One Chance' Rule' in relation to forced marriage, FGM and HBV. Staff recognise they may only have one chance' to speak to a pupil who is a potential victim and have just one chance to save a life.

School is aware that if the victim is not offered support following disclosure that the 'One Chance' opportunity may be lost. Therefore, all staff are aware of their responsibilities and obligations when they become aware of potential forced marriage, FGM and HBV cases.

13.11 Mental Health

Staff will be aware that mental health problems can, in some cases, be an indicator that a child has suffered or is at risk of suffering abuse, neglect or exploitation. Whilst school recognise that only appropriately trained professionals can diagnose mental health problems; staff are able to make day to day observations of children and identify such behaviour that may suggest they are experiencing a mental health problem or be at risk of developing one.

How traumatic Adverse Childhood Experiences and experiences of abuse, neglect and exploitation can impact on a child's mental health, behaviour and education through to adolescence and adulthood will be covered in safeguarding awareness training and updates. If staff have a concern about a child's mental health that is also a safeguarding concern, they will share this with the DSL or deputy. School will also refer to the mental health and behaviour in schools' guidance⁹.

When supporting children experiencing mental health difficulties school will explore resources such as

[Senior Mental Health Lead Training](#)

[Promoting children and young people's mental health and wellbeing](#)

[Rise Above: Resources for School from Public Health England #esafety](#)

[Every Interaction Matters Webinar](#)

[Wellbeing for Education Recovery](#)

[Preventing and Tackling Bullying](#)

[Promoting and supporting mental health and wellbeing in schools and colleges](#)

13.12 Private Fostering Arrangements

A private fostering arrangement occurs when someone other than a parent or close relative cares for a child for a period of 28 days or more, with the agreement of the child's parents. It applies to children under the age of 16 or 18 if the child is disabled. Children looked after by the local authority or who are placed in residential schools, children's homes or hospitals are not considered to be privately fostered.

Private fostering occurs in all cultures, including British culture and children may be privately fostered at any age.

School recognises that most privately fostered children remain safe and well but are aware that safeguarding concerns have been raised in some cases. Therefore, all staff are alert to possible safeguarding issues, including the possibility that the child has been trafficked into the country.

By law, a parent, private foster carer or other persons involved in making a private fostering arrangement must notify children's services as soon as possible. However, where a member of staff

⁹ [Mental health and behaviour in schools: guidance](#)

becomes aware that a pupil may be in a private fostering arrangement, they will raise this with the DSL and the DSL will notify MASH of the circumstances.

13.13 Looked after children and previously looked after children

The most common reason for children becoming looked after is as a result of abuse and neglect. Our school will ensure that staff have the necessary skills and understanding to keep looked after/previously looked after children safe. Appropriate staff have information about a child's looked after legal status and care arrangements, including the level of authority delegated to the carer by the authority looking after the child and contact arrangements with birth parents or those with parental responsibility.

The designated teacher for looked after children and the DSL have details of the child's social worker and the name and contact details of the Local Authority's virtual school head for children in care.

The designated teacher for looked after children works with the virtual school head to discuss how Pupil Premium Plus funding can be best used to support the progress of looked after children in the school and meet the needs in the child's personal education plan. The designated teacher will follow the statutory guidance 'Promoting the education of Looked After Children'.

13.14 Children Missing Education & Children Absent from Education

Attendance, absence, and exclusions are closely monitored. The school will hold more than one emergency contact number for pupils and students where reasonably possible. A child going missing or who has unexplainable and/or persistent absences from education is a potential indicator of abuse, neglect, and exploitation, including sexual abuse and sexual exploitation.

The DSL will monitor unauthorised absences and take appropriate action including notifying the local authority particularly where children go missing on repeat occasions and/or are missing for periods during the school day in conjunction with 'Children Missing Education: Statutory Guidance for Local Authorities'¹⁰.

Staff must be alert to signs of children at risk of travelling to conflict zones, female genital mutilation and forced marriage.

13.15 Child on Child Abuse (including Sexual Violence, Sexual Harassment & HSB)

The DSL, Governing Body/Board and Head Teacher will take due regard to Part 5, KCSiE

In most instances, the conduct of pupils towards each other will be covered by our behaviour policy. However, some allegations may be of such a serious nature that they may raise safeguarding concerns. School recognise that children are capable of abusing their peers. It will not be passed off as 'banter' or 'part of growing up'. The forms of child-on-child abuse are outlined below.

- Domestic abuse – an incident or pattern of actual or threatened acts of physical, sexual, financial and/or emotional abuse, perpetrated by an adolescent against a current or former dating partner regardless of gender or sexuality.
- Bullying (including cyberbullying, prejudice-based and discriminatory bullying).
- Child sexual exploitation – children under the age of 18 may be sexually abused in the context of exploitative relationships, contexts and situations by peers who are also under 18.

¹⁰ [CME Statutory Guidance for Local Authorities](#)

- Harmful sexual behaviour – children and young people presenting with sexual behaviours that are outside of developmentally ‘normative’ parameters and harmful to themselves and others
- Upskirting – which typically involves taking a picture under a person’s clothing without them knowing, with the intention of viewing their genitals or buttocks to obtain sexual gratification, or cause the victim humiliation, distress or alarm.
- Serious youth violence¹¹ – any offence of most serious violence or weapon enabled crime, where the victim is aged 0-19’ i.e. Murder, manslaughter, rape, wounding with intent and causing grievous bodily harm. ‘youth violence’ is defined in the same way, but also includes assault with injury offences. All staff will receive training so that they are aware of indicators which may signal that children are at risk from or involved with serious violence and crime.
- Initiation/hazing type violence and rituals (this could include activities involving harassment, abuse or humiliation used as a way of initiating a person into a group and may also include an online element); and
- Consensual and non-consensual sharing of nudes and semi nudes’ images and or videos (also known as sexting or youth produced sexual imagery).

The term child-on-child abuse can refer to all of these definitions and a child may experience one or multiple facets of abuse at any one time. Therefore, our response will cut across these definitions and capture the complex web of their experiences.

There are also different gender issues that can be prevalent when dealing with child-on-child abuse (i.e. girls being sexually touched/assaulted, or boys being subjected to initiation/hazing type violence).

School aims to reduce the likelihood of child-on-child abuse through:

- The established ethos of respect, friendship, courtesy, and kindness.
- High expectations of behaviour.
- Clear consequences for unacceptable behaviour.
- Providing a developmentally appropriate PSHE curriculum which develops pupils’ understanding of healthy relationships, acceptable behaviour, consent and keeping themselves safe.
- Systems for any pupil to raise concerns with staff, knowing that they will be listened to, valued and believed.
- Robust risk assessments and providing targeted work for pupils identified as being a potential risk to other pupils and those identified as being at risk.

Research indicates that young people rarely disclose child-on-child abuse and that if they do, it is likely to be to their friends. Therefore, School will also educate pupils in how to support their friends if they are concerned about them, that they should talk to a trusted adult in the school and what services they can contact for further advice.

Any concerns, disclosures, or allegations of child-on-child abuse in any form should be referred to the DSL using the school’s child protection procedures as set out in this policy. Where a concern regarding child-on-child abuse has been disclosed to the DSL(s), advice and guidance will be sought

¹¹ [Preventing youth violence and gang involvement](#)

from the Local Authority Safeguarding Hub and where it is clear a crime has been committed or there is a risk of crime being committed the Police will be contacted.

Working with external agencies the school will respond to the unacceptable behaviour. If a pupil's behaviour negatively impacts on the safety and welfare of other pupils, then safeguards will be put in place to promote the well-being of the pupils affected and the victim and perpetrator will be provided with support.

Sexual Harassment, Sexual Violence and Harmful Sexual Behaviour

The boundary between what is abusive and what is part of normal childhood or youthful experimentation can be blurred. The determination of whether behaviour is developmental, inappropriate, or abusive will hinge around the related concepts of true consent, power imbalance and exploitation. Children's sexual behaviour exists on a wide continuum, ranging from normal and developmentally expected to inappropriate, problematic, abusive and violent. Problematic, abusive, and violent sexual behaviour is developmentally inappropriate and may cause developmental damage. This may include children and young people who exhibit a range of sexually problematic behaviour such as indecent exposure, obscene telephone calls, fetishism, bestiality and sexual abuse against adults, peers, or children. Staff should be vigilant to:

- bullying (including cyberbullying)
- physical abuse such as hitting, kicking, shaking, biting, hair pulling, or otherwise causing physical harm
- sexual violence and sexual harassment
- sexting (also known as youth produced sexual imagery)
- initiation/hazing type violence and rituals
- upskirting

Developmental Sexual Activity

Encompasses those actions that are to be expected from children and young people as they move from infancy through to an adult understanding of their physical, emotional, and behavioural relationships with each other. Such sexual activity is essentially information gathering and experience testing. It is characterised by mutuality and of the seeking of consent.

Inappropriate Sexual Behaviour

Can be inappropriate socially, inappropriate to development, or both. In considering whether behaviour fits into this category, it is important to consider what negative effects it has on any of the parties involved and what concerns it raises about a child or young person. It should be recognised that some actions may be motivated by information seeking, but still cause significant upset, confusion, worry, physical damage, etc. It may also be that the behaviour is "acting out" which may derive from other sexual situations to which the child or young person has been exposed. If an act appears to have been inappropriate, there may still be a need for some form of behaviour management or intervention. For some children, educative inputs may be enough to address the behaviour.

Abusive sexual activity included any behaviour involving coercion, threats, aggression together with secrecy, or where one participant relies on an unequal power base. In order to more fully determine the nature of the incident the following factors should be given consideration. The presence of exploitation in terms of:

Equality – consider differentials of physical, cognitive, and emotional development, power and control and authority, passive and assertive tendencies.

Consent – agreement including all the following:

- Understanding that is proposed based on age, maturity, development level, functioning and experience
- Knowledge of society's standards for what is being proposed
- Awareness of potential consequences and alternatives
- Assumption that agreements or disagreements will be respected equally
- Voluntary decision
- Mental competence

Coercion – the young perpetrator who abuses may use techniques like bribing, manipulation and emotional threats of secondary gains and losses that is loss of love, friendship, etc. Some may use physical force, brutality, or the threat of these regardless of victim resistance.

In evaluating sexual behaviour of children and young people, the above information should be used only as a guide. Further information and advice is available in the Devon multi-agency protocol “Working with Sexually Active Young People” available at [South West Child Protection Procedures](#).

One Minute Guide; <https://www.devon.gov.uk/support-schools-settings/safeguarding/guidance-policy-and-tools-2/safeguarding-one-minute-guides/no-46-harmful-sexual-behaviour/>

13.16 Online Safety

Our pupils increasingly use electronic equipment on a daily basis to access the internet and share content and images via social media sites such as Facebook, twitter, Instagram, Snapchat and ooVoo.

Unfortunately, some adults and other children use these technologies to harm children. The harm might range from sending hurtful or abusive texts or emails, to grooming and enticing children to engage in sexual behaviour such as webcam photography or face-to-face meetings. Pupils may also be distressed or harmed by accessing inappropriate material such as pornographic websites or those which promote extremist behaviour, criminal activity, suicide or eating disorders.

School has an online safety policy which explains how we try to keep pupils safe in school and how we respond to online safety incidents (See flowchart below).

School will also provide advice to parents when pupils are being asked to learn online at home and consider how best to safeguard both pupils and staff.

Pupils are taught about online safety throughout the curriculum and all staff receive online safety training which is regularly updated including an understanding of the expectations, applicable roles and responsibilities in relation to filtering and monitoring.

AI and technology

1. Legal and Ethical Responsibilities

Schools must ensure that AI and technology use complies with existing safeguarding frameworks, including:

- Keeping Children Safe in Education (KCSIE) statutory guidance 1
- UK GDPR and Data Protection Act 2018
- Children's Online Privacy Protection and age-appropriate design codes

2. AI Use by Teachers

Teachers are permitted to use AI for tasks like lesson planning, marking, and admin. However, they must verify AI-generated content and ensure it is appropriate and accurate.

Final responsibility for safeguarding and educational content always lies with the teacher and school leadership.

3. AI Use by Pupils

Schools can decide whether pupils may use AI tools, but must:

- Enforce age restrictions (many AI tools are 18+)
- Ensure close supervision
- Use tools with built-in safety and filtering features²

4. Data Security and Privacy

Schools must manage data security risks associated with AI and cloud-based tools.

The National Cyber Security Centre (NCSC) provides guidance on:

- Cloud security
- Cyber defence
- Device safeguarding (filtering and monitoring)

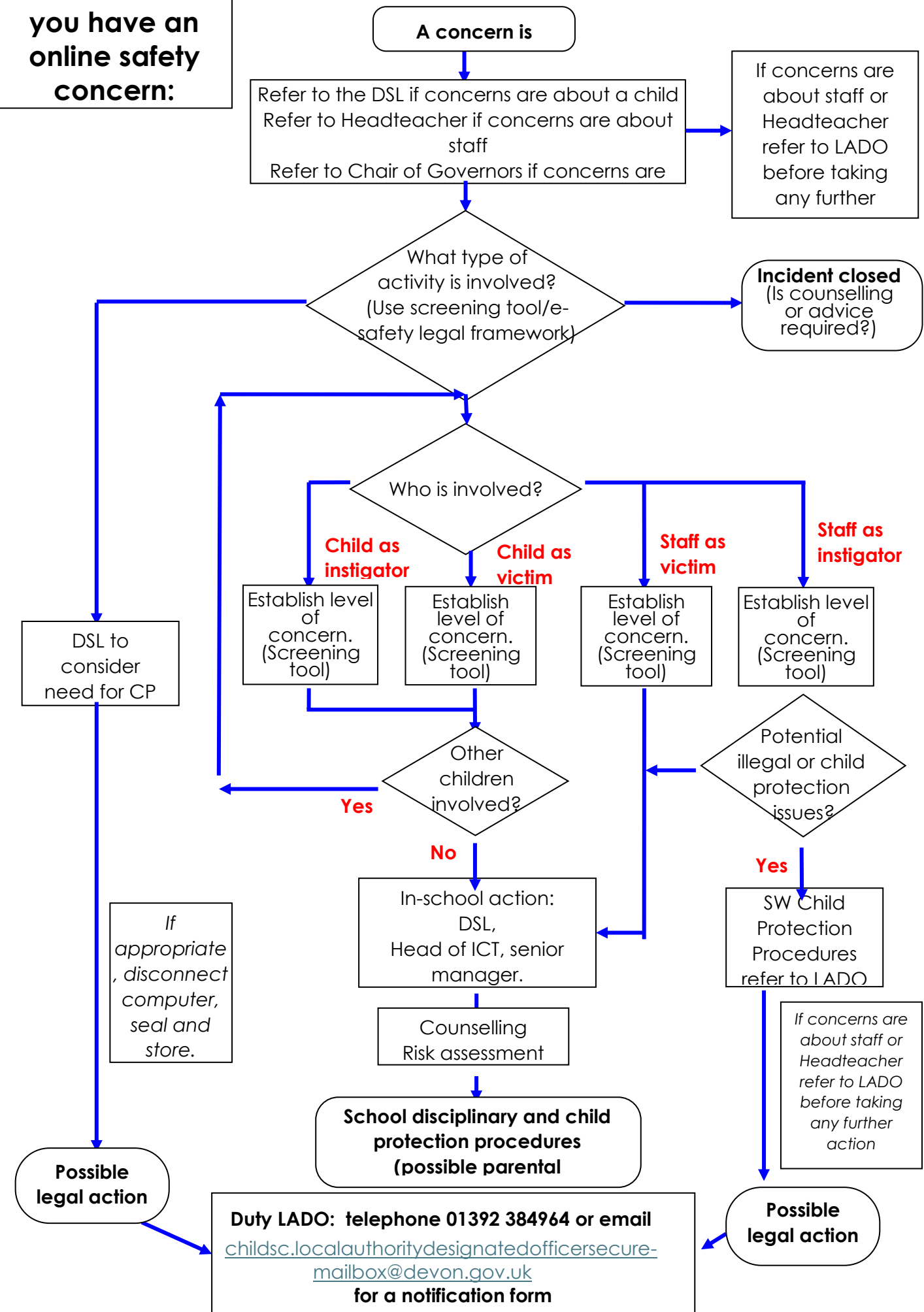
<https://www.ncsc.gov.uk/>

5. Policy and Oversight

While there is no single formal AI framework yet, the Department for Education (DfE) encourages schools to:

- Use AI ethically and cautiously
- Align AI use with existing safeguarding and data protection policies³
- Develop internal policies for AI use, including acceptable use agreements and staff training

What to do if you have an online safety concern:



13.17 Youth produced sexual imagery (sexting)

The practice of children sharing images and videos via text message, email, social media or mobile messaging apps has become commonplace. However, this online technology has also given children the opportunity to produce and distribute sexual imagery in the form of photos and videos. Such imagery involving anyone under the age of 18 is illegal.

Youth produced sexual imagery refers to both images and videos where:

- A person under the age of 18 creates and shares sexual imagery of themselves with a peer under the age of 18.
- A person under the age of 18 shares sexual imagery created by another person under the age of 18 with a peer under the age of 18 or an adult.
- A person under the age of 18 is in possession of sexual imagery created by another person under the age of 18.

All incidents of this nature should be treated as a safeguarding concern and in line with the UKCIS guidance 'Sexting in schools and colleges: responding to incidents and safeguarding young people'¹², and 'Sharing nudes and semi-nudes: how to respond to an incident.'¹³

Cases where sexual imagery of people under 18 has been shared by adults and where sexual imagery of a person of any age has been shared by an adult to a child is child sexual abuse and should be responded to accordingly.

If a member of staff becomes aware of an incident involving youth produced sexual imagery, they should follow the child protection procedures and refer to the DSL as soon as possible. The member of staff should confiscate the device involved and set it to flight mode or, if this is not possible, turn it off. Staff should not view, copy or print the youth produced sexual imagery.

The DSL should hold an initial review meeting with appropriate school staff and subsequent interviews with the children involved (if appropriate). Parents should be informed at an early stage and involved in the process unless there is reason to believe that involving parents would put the child at risk of harm. At any point in the process if there is concern a young person has been harmed or is at risk of harm a referral should be made to the Local Authority Safeguarding Hub and/or the Police as appropriate.

Immediate referral at the initial review stage should be made to the Local Authority Safeguarding Hub/Police if.

- The incident involves an adult.
- There is good reason to believe that a young person has been coerced, blackmailed or groomed or if there are concerns about their capacity to consent (for example, owing to special education needs).
- What you know about the imagery suggests the content depicts sexual acts which are unusual for the child's development stage or are violent.
- The imagery involves sexual acts.
- The imagery involves anyone aged 12 or under.

¹² [Sexting in schools and colleges](#)

¹³ [Sharing nudes and semi-nudes: how to respond to an incident \(UKCIS\)](#)

- There is reason to believe a child is at immediate risk of harm owing to the sharing of the imagery, for example the child is presenting as suicidal or self-harming.

If none of the above apply then the DSL will use their professional judgement to assess the risk to pupils involved and may decide, with input from the Headteacher, to respond to the incident without escalation to the Local Authority Safeguarding Hub or the police. Such decisions will be recorded.

In applying judgement, the DSL will consider if:

- There is a significant age difference between the sender/receiver.
- There is any coercion or encouragement beyond the sender/receiver.
- The imagery was shared and received with the knowledge of the child in the imagery.
- The child is more vulnerable than usual i.e. At risk.
- There is a significant impact on the children involved.
- The image is of a severe or extreme nature.
- The child involved understands consent.
- The situation is isolated or if the image been more widely distributed.
- There other circumstances relating to either the sender or recipient that may add cause for concern i.e. Difficult home circumstances.
- The children have been involved in incidents relating to youth produced imagery before.

If any of these circumstances are present the situation will be escalated according to our child protection procedures, including reporting to the police or the Local Authority Safeguarding Hub. Otherwise, the situation will be managed within the school.

The DSL will record all incidents of youth produced sexual imagery, including both the actions taken, actions not taken, reasons for doing so and the resolution in line with safeguarding recording procedure.

13.18 Arrangements for safeguarding children on trips and visits and for work experience and clubs run by external providers

- Where staff are not supervising children from their own setting they must follow this policy.
- Where staff are supervising children from their own settings but at off- site locations, then this policy and specified school specific local policies apply.
- Visitors working on school sites with children are expected to abide by this policy.
- Where locations for off- site activities/events have their own risk assessments for children and visitors, these should be adopted and adhered to.
- Where locations for off- site activities/events have no risk assessments for children and visitors in place the home/organising school must prepare risk assessments in accordance with school specific policy.
- No trips or visits must take place under any circumstances without relevant requirements being adhered to most specifically in relation to the “Evolve” trips and visits requirements;
- Children on work experience must have school-based supervisors allocated who have completed at least raising awareness safeguarding and child protection training. This policy applies to all children on such work experience and must be shared with employers. Employers and children must be made aware of how to report concerns and who to report

to. Reports should be made to the home school DSL. Welfare checks must be made at least weekly, by school-based supervisors, when children are on work experience.

- A child educated off site on dual roll arrangements will be safeguarded by the DSL/safeguarding leads at the alternative provision venue and the policies of these providers will apply. However, the child remains the substantive responsibility of their original school who must assure themselves and ensure that the setting is fit for purpose. Annual quality assurance of offsite/dual roll/alternative provision is the responsibility of the DSL at the original (substantive or referring) school. Regular contact must be made with the alternative provider and the DSL of the home school who should communicate and update each other regularly. (KCSiE)
- Third party organisations using or hiring Trust premises for their own activities and/or events must provide their own safeguarding policies to Headteachers of those venues that are being used. Providers must meet the expectations of the guidance and leasing agreements must reflect this expectation; <https://www.gov.uk/government/collections/keeping-children-safe-in-out-of-school-settings>
- Where allegations are received relating to an incident that happened when an individual or organisation was using their premises for the purposes of running activities for children, the school should follow its own safeguarding policy and procedures, including informing the LADO. This responsibility falls on the school and not the out of school setting. (KCSiE)

13.19 Additional Resources

Further advice on child protection is available from:

NSPCC: <http://www.nspcc.org.uk/>

Childline: <http://www.childline.org.uk/pages/home.aspx>

Anti-Bullying Alliance: <http://anti-bullyingalliance.org.uk/>

Beat Bullying: <http://www.beatbullying.org/>

Childnet International –making the internet a great and safe place for children. Includes resources for professionals and parents <http://www.childnet.com/>

Thinkuknow (includes resources for professionals and parents) <https://www.thinkuknow.co.uk/>

Safer Internet Centre <http://www.saferinternet.org.uk/>

Knife Crime <https://www.college.police.uk/guidance/knife-crime-evidence-briefing/understanding-causes-knife-crime>

Knife Crime One Minute Guide; <https://www.devon.gov.uk/support-schools-settings/safeguarding/guidance-policy-and-tools-2/safeguarding-one-minute-guides/no-69-knife-crime/>



Children's Front Door



If you are concerned that a child is being abused, or to request Early Help (L3) support you can

call: 0345 155 1071 **or**

complete the Request for Support online form available at:

[https://devoncountycouncil.outsystemsenterprise.com/MASH/
homepage](https://devoncountycouncil.outsystemsenterprise.com/MASH/homepage)

The DevonSCP Children's Front Door **consultation line** for **professionals only**: **01392 388428**

Emergency Duty Team out of hours **0345 6000 388**

Police non-emergency 101

For all LADO enquiries Exeter (01392) 384964

childsc.localauthoritydesignatedofficersecure-mailbox@devon.gov.uk

Further info: <https://new.devon.gov.uk>

[Managing allegations - Devon Children and Families Partnership \(dcfp.org.uk\)](http://dcfp.org.uk)

Early Help Team

Head of Service: Lise Bird

Early Help Locality Contact information:

<https://www.devonscp.org.uk/document/early-help-locality-contact-information/>

Locality Early Help Mailbox

North: earlyhelpnorthsecure-mailbox@devon.gov.uk

Mid & East: earlyhelpmideastsecure-mailbox@devon.gov.uk

South & West: earlyhelpsouthsecure-mailbox@devon.gov.uk

Exeter: earlyhelpexetersecure-mailbox@devon.gov.uk

For emergencies outside of office hours please call:

0345 6000 388