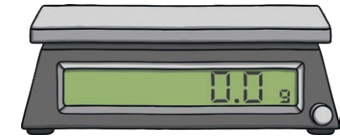
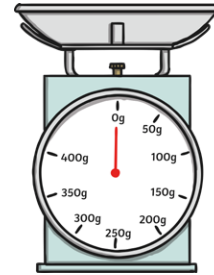
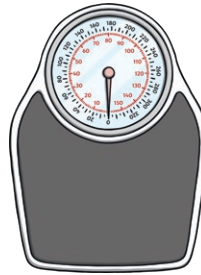
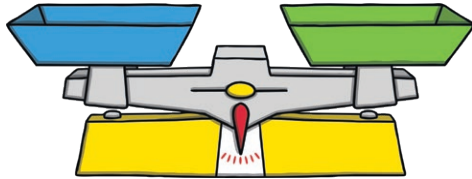


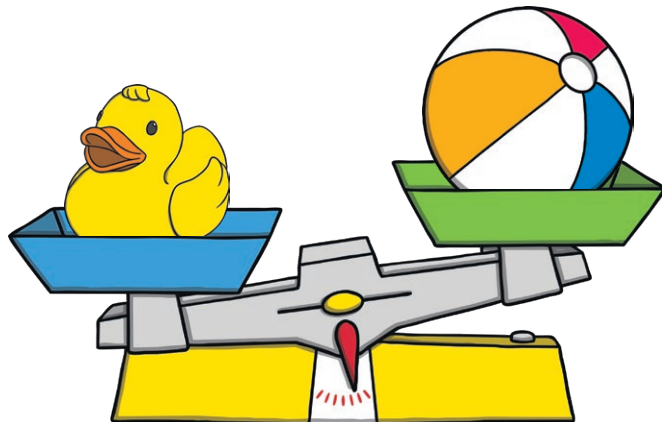
Weight and Mass

We can use different types of scales to measure mass.



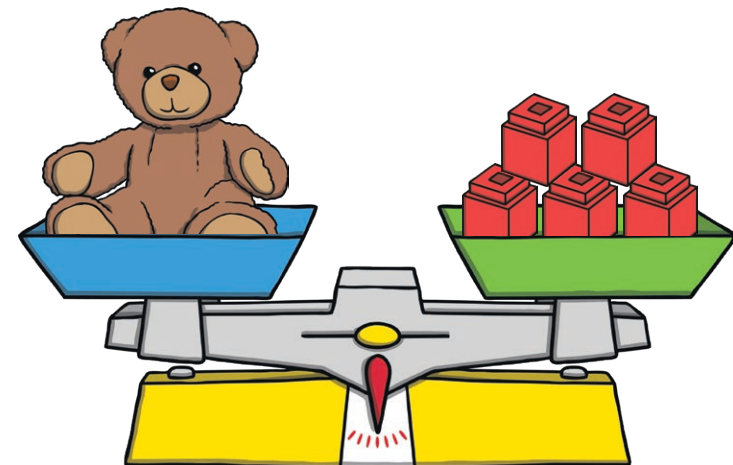
Compare Mass

The duck is **heavier** than the ball.
The ball is **lighter** than the duck.



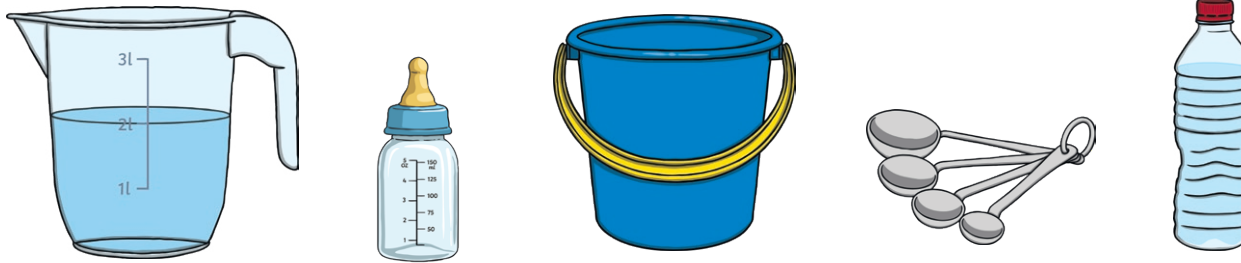
Measure Mass

The teddy **weighs** the same as 5 cubes.
They are **balanced**.



Capacity and Volume

We can use different containers to measure volume.

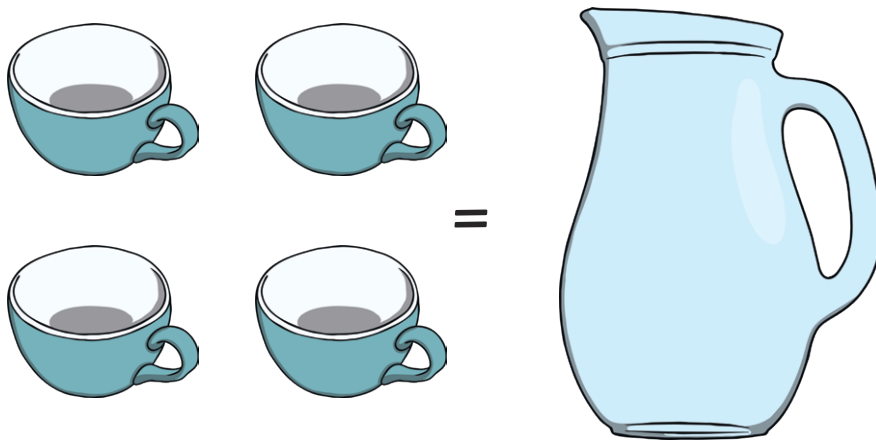


Capacity is the total amount of liquid a container can hold.

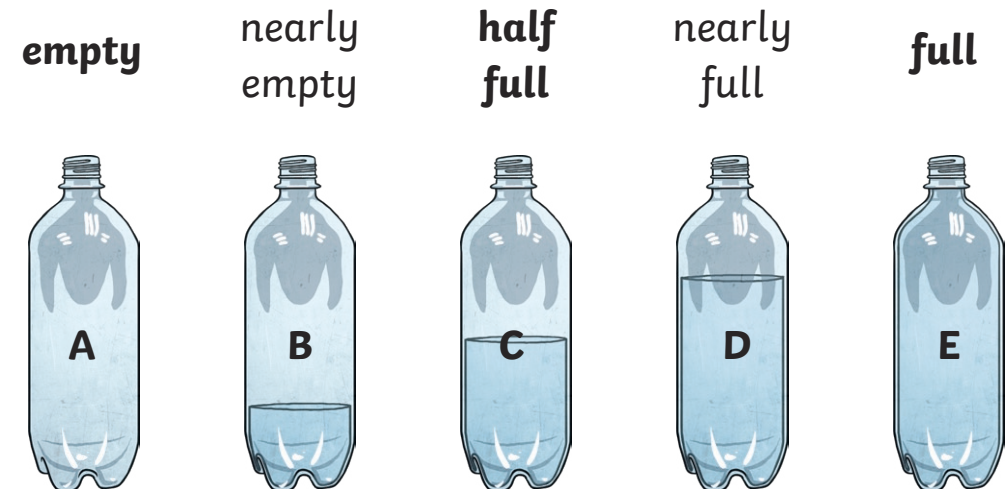
Volume is the amount of liquid that is in the container.
This can vary.

Measure Capacity

It takes 4 cups to fill this jug.



Compare Capacity



B has more water than A. D has less water than E.