

HELLO

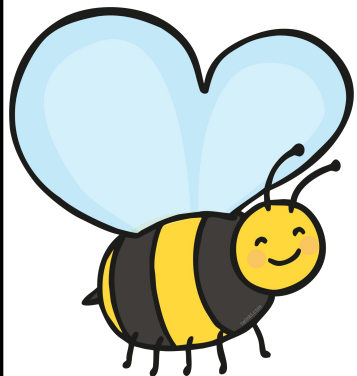
AND WELCOME



- ★ Meet the teachers
- ★ Routines
- ★ Important items
- ★ Hometime
- ★ Classroom Expectations
- ★ Homework
- ★ Website
- ★ Contact us

MEET THE TEACHERS

Our Mission: *'Happy children, loving learning'*



Mrs Busby
Bumblebees
TA: Miss Foster



Mrs Matthews
Owls
TA: Miss Middleton



Mr Babington
Moles
TA: Miss Cohen



Miss Robinson
Deers
TA: Miss Croft



Miss Gibbon
Hedgehogs
TA: Mrs Blakemore

HLTA/PPA cover: *Mr Baughan and Mrs Brown*

RWI Interventions: *Miss Parsons*

Morning TA: *Miss Wilson*

YEAR 1 / 2

- ✓ School trips and special visitors
- ✓ Exciting lessons
- ✓ Year 1 Easter play
- ✓ Year 2 end of year play

Workshops

Please look out for our upcoming phonics, maths and writing workshops. They will be advertised on WEDUC.

We also have our parent pop ins for you to come and view your children's classroom on 26th September at 2:45 pm.

ROUTINE

Morning Reading/Task

Every day as the children come into school they will be practising their names, personalised spellings and creative writing.

Collective Worship

Everyday

Class or whole school.

Follows a Christian teaching throughout the week.

Prayers and songs.



Water breaks and toilet breaks

Water bottles are accessible to the children all day and can be refilled. Toilets are accessed via the cloakroom.



ROUTINE

Before School:

All children to line up every morning at their classes designated place on the playground. There will be signs on the playground.

Owls - nearest the field

Hedgehogs

Bumblebees

Moles

Deers

Each class will come out to greet the children and walk them in once the children are lined up.

HOMETIME

Where to wait:

Please ensure that you wait on the playground and not right outside the classroom door or on the verge under the trees.

Moles - from their classroom door.

Deers - from the corridor door next to Moles.

Owls - from the grey metal gate at the front of school.

Bumblebees and Hedgehogs - from the side door next to Bumblebees.

If a different adult is picking up your child, please let the office know in advance with a password. Children will not be released until we can see you and we confirm that they are safe to go.

Routine

This may take a little while for us to get to know you but please bare with us as this system ensures the safety of all children.

Once your child is at the front of the line, we will send them directly to you when you are visible to the class teacher and child. Please **do not** attempt to take your child from the class line as this causes confusion.

CLASSROOM EXPECTATIONS

Rewards

- ★ Verbal praise
- ★ Star of the Week
- ★ Positive Postcards or Phone Calls



Responsibilities

- ★ Class contract
- ★ Class Leaders (voted weekly)
- ★ Collective Worship Leaders (Year 2)
- ★ School Councillors (Year 1 and 2)
- ★ Take care of one another
- ★ Be prepared to learn
- ★ Communicate with one another and teachers

HOMework

RWI books ~ your child's wallet needs to be in school every day and should only contain their RWI book.

Red Words (CEW) - Reading and Spelling (RWI wallets)

Maths Home Learning Booklets - on the app

Handwriting and letter formation - on the app



Choice books - choose on a Friday return on a Wednesday.

Children cannot take another until the first one is returned.

If your child does any work at home such as craft, writing, maths, please send us a picture in an email or bring it in as we love to celebrate children's interests in taking their learning further.

Please ask if you are unsure, we are always happy to help!

IMPORTANT ITEMS

Brain breaks

Every day and as needed.

Active breaks - movement, coordination, mental wellbeing.

Uniform

Correct school uniform is required - **named** please!

Please ensure your child is dressed appropriately for the weather and brings a waterproof coat

* Please also bring an **empty** water bottle, Read Write Inc wallet and a book bag every day.

The school uniform is as follows:

- Blue or red sweatshirts and cardigans with school logo,
- Blue, red or white polo shirts
- Black or grey trousers, skirts, pinafores or shorts,
- Blue or red gingham or striped summer dresses (optional)
- Shoes suitable for outdoor play
- Blue or red book bag

IMPORTANT ITEMS

P.E. Kits

Children need to come in PE kits on their classes PE days, week commencing the 8th September.

Please name every item of your child's clothing.

Children are responsible for their own possessions.

Long hair must be tied back for safety.

Earrings are to be removed before attending school on PE days. If the children are unable to take them out independently, they will cover their own ears with micropore tape.

For health and safety reasons and based on PE association guidance, pupils should not wear jewelry including earrings for PE. We ask that children should not come to school in earrings on PE days.

If children do wear earrings on PE days the options are for

a) the children to tape their own ears OR

b) the children to remove their own earrings (these will be put in a named envelope and the child will be asked to put them in their drawer for safe keeping).

IMPORTANT ITEMS

P.E. Days:

Hedgehogs - Wednesday and Thursday

Deers - Monday and Friday

Moles - Tuesday and Wednesday

Bumblebees - Monday and Tuesday

Owls - Thursday and Friday

WEBSITE

Keep up to date on our website!

<https://www.pocklington-infants.org.uk/>

*Also, don't forget to check the school app (**Reach More Parents**), for information about any parent workshops, important dates, parent pop-ins and other information.*

If you are having problems using this, please speak to a member of the office team straight away so that you don't miss anything.

CONTACT US

- ★ Find us on the playground (before or after school)
- ★ Leave a message with the office... we will call you back as soon as we can.
- ★ Email your child's class teacher
- ★ Email the school office

If you have any issues with the app or ParentPay, please see the office staff.



CONTACT US

tom.babington@pocklington-infants.org.uk

katy.gibbon@pocklington-infants.org.uk

georgina.robinson@pocklington-infants.org.uk

hannah.busby@pocklington-infants.org.uk

katie.matthews@pocklington-infants.org.uk

head@pocklington-infants.org.uk