

Welcome to Year 1
Mrs Appleton and Ms Lasek



“Living and learning, inspired by our faith”

September 2025



	8.45-9	9.05-9.25	9.15am – 10.30am		Break	10.45 – 11:40	Lunch Break	1pm- 2pm		Break	2.15pm-3pm	
Monday	Soft Start-reading	Celebration of the Word Assembly	Phonics	English		Maths		Handwriting	RE		Geography/History	
Tuesday	Soft Start-Phonics	Prayer and Liturgy	Phonics	English		PE		Handwriting	Maths		Science	
Wednesday	Soft Start-Phonics	Assembly	Music			PE		Handwriting/Phonics	Handwriting/Phonics		Maths	
Thursday	Soft Start-Phonics	Hymn Practise	Phonics	English		Maths		RE			Computing/ RSE	
Friday	Soft Start-Phonics	Celebration Assembly	Phonics	English		Maths		Handwriting	RE		DT/Art	Pupil led prayer and liturgy



PE Days / Uniform

P.E. will be on a **Tuesday** and **Wednesday**

The children are required to wear their P.E. kits for the whole day when taking part in P.E.

All clothing and bags should be labelled with your child's name.

Please remember to dress your child in the correct uniform on the days they do not have P.E. They should be wearing school shoes throughout the day. If your child cannot wear their school shoes, please inform me by writing in their diary.



Snacks / Drinks

Your child will be provided with fruit at break time. If your child would like milk, please contact the office.

Only water is allowed during class time.



Dates for the Diary

Please always refer to the newsletter and community calendar on the website.

Coming up this Autumn:

Parents Evening: Thursday 27th November (online)

KSI Nativity performance: Wednesday 10th and Thursday 11th December

— This will be confirmed nearer the time because of the build.



Home / School Diaries

Books will be changed on your child's reading day. Two books will be chosen at a time. Books that have been finished will be changed.

Please ensure your child reads for at least fifteen minutes every evening. Their reading diary **must** be signed to show they have read.

Please check that your child is able to comprehend and answer questions about the book they have chosen.

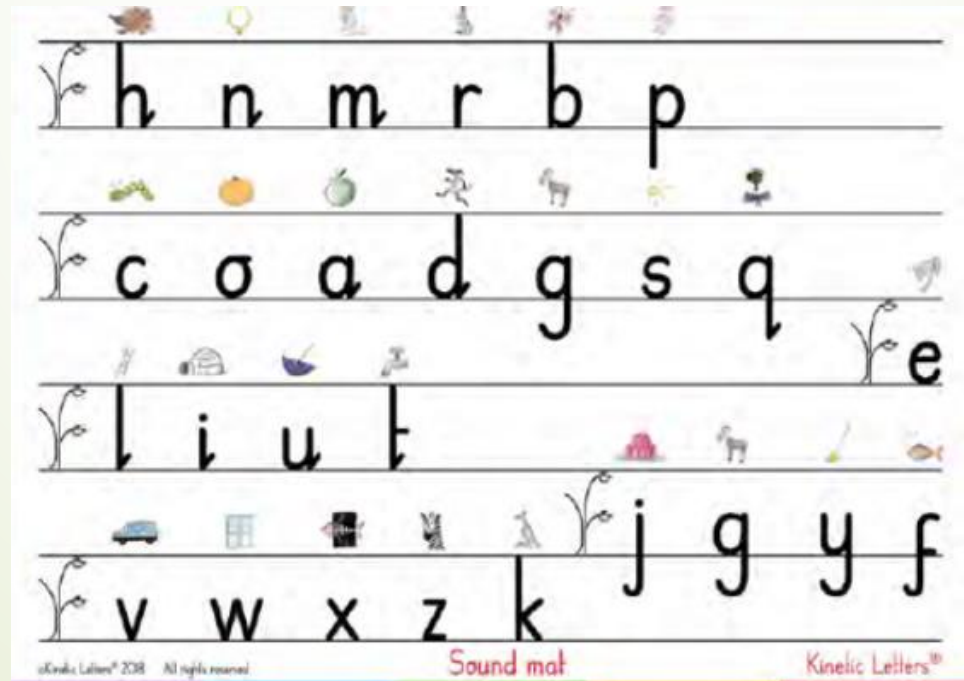
Any issues / messages can be placed into the diary for us to communicate.



Kinetic Letters Handwriting

We will continue to follow the Kinetic letters handwriting programme that the children focused on in Reception.

This programme not only teaches the children how to form letters correctly, but also how to improve their stamina, posture and motor skills.





Phonics

Here at St Mary's, we deliver our Phonic lessons through Super Sonic Phonic Friends. The website provides the class with child friendly characters and illustrations which underpin the whole scheme. They are easy to remember with accompanying rhyming phrases that are consistently repeated in every lesson.

E.g. What can we see in the Phonics TV?

Phase 3 phonic sounds (digraphs and trigraphs) will be reviewed in the Autumn Term before we go on to Phase 4 (consonant blends) and Phase 5 (alternate digraphs/trigraphs and split digraphs).



Phonics Screening Test

What is the Phonics Screening Check?

Children in Year 1 throughout the country will all be taking part in a phonics screening check during the same week in June. Children in Year 2 will also take the check if they did not achieve the required result when in Year 1 or they have not taken the test before.

What Happens During the Screening?

The test contains 40 words. Each child will sit one-to-one and read each word aloud to a teacher. The test will take approximately 10 minutes per child, although all children are different and will complete the check at their own pace. The list of words the children read is a combination of 20 real words and 20 pseudo words (nonsense words).

Pseudo Words (Nonsense Words)

The pseudo words will be shown to your child with a picture of an alien. This provides the children with a context for the pseudo word which is independent from any existing vocabulary they may have. Pseudo words are included because they will be new to all pupils; they do not favour children with a good vocabulary knowledge or visual memory of words.

Reporting to Parents

By the end of the summer term all schools must report each child's results to their parents. They will also confirm if the child has met the standard threshold. Children who do not achieve the expected level will retake the test when they are in Year 2.



Phonics Screening Test continued...

“ Read as much as possible to and with your child. ”

How Can I Help My Child at Home?

- Play lots of sound and listening games with your child.
- Read as much as possible to and with your child.
- Encourage and praise – get them to have a 'good guess'.
- If your child is struggling to decode a word, help them by encouraging them to say each sound in the word from left to right.
- Blend the sounds by pointing to each one, e.g. /c/ in cat, /p/ in pat, /ng/ in sing, /ee/ in been.
- Discuss the meaning of words if your child does not know what they have read.



White Rose Maths

Here at St Mary's, we are committed to ensuring that children are able to recognise the importance of maths in the wider world and that they are also able to use their mathematical skills and knowledge confidently in their lives in a range of different contexts. We want all children to enjoy mathematics and to experience success in the subject, with the ability to reason mathematically.

We do this through the White Rose Mathematics Scheme. For each year group, the scheme of learning includes an overview of the maths that your child should be learning at any point in the year. Each year is split into three terms (autumn, spring and summer), and each term comprises individual blocks of learning about a particular topic.

Autumn

Number

Place value
(within 10)
FREE TRIAL

VIEW

Free trial

Number

Addition and subtraction
(within 10)

VIEW

Geometry
Shape

VIEW

Consolidation

Spring

Number

Place value
(within 20)

VIEW

Number

Addition and subtraction
(within 20)

VIEW

Number

Place value
(within 50)

VIEW

Measurement

Length and
height

VIEW

Measurement

Mass and
volume

VIEW

Summer

Number

Multiplication and division

VIEW

Number

Fractions

VIEW

Geometry
Position and
direction

VIEW

Number

Place value
(within 100)

VIEW

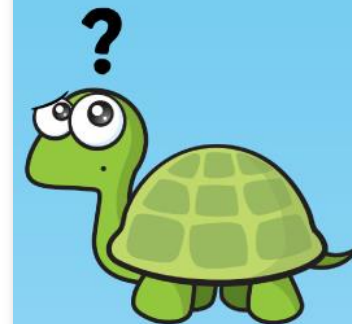
Measurement
Money

VIEW

Measurement

Time

VIEW





White Rose Science

Here at St Mary's, we recognise how science impacts every aspect of daily life, and without science humankind would not have made progress throughout history. As one of the core subjects taught at primary level, we give the teaching and learning of science the prominence it deserves.

As we have done in Maths, we are now teaching from White Rose Science planning. This scheme is very similar to how White Rose Maths is taught, where subjects are taught in blocks throughout the year.

Autumn	<div><div>Biology</div><div>The human body</div><div>FREE TRIAL</div><div>Free trial</div><div>VIEW</div></div>	<div><div>Biology</div><div>Seasonal changes</div><div>VIEW</div></div>	<div><div>Chemistry</div><div>Materials</div><div>VIEW</div></div>	<div><div>Biology</div><div>Seasonal changes</div><div>VIEW</div></div>		
Spring	<div><div>Biology</div><div>Planting A</div><div>VIEW</div></div>	<div><div>Biology</div><div>Animals</div><div>VIEW</div></div>	<div><div>Sustainability</div><div>Caring for the planet</div><div>VIEW</div><div>Leaf icon</div></div>	<div><div>Biology</div><div>Seasonal changes</div><div>VIEW</div></div>	<div><div>Biology</div><div>Planting B</div><div>VIEW</div></div>	<div>Consolidation</div>
Summer	<div><div>Biology</div><div>Plants</div><div>VIEW</div></div>	<div><div>Biology</div><div>Planting C</div><div>VIEW</div></div>	<div><div>Sustainability</div><div>Growing and cooking</div><div>VIEW</div><div>Leaf icon</div></div>	<div><div>Biology</div><div>Seasonal changes</div><div>VIEW</div></div>	<div>Consolidation</div>	



ClassDojo

The children are awarded Dojo points throughout the school day. These will be added and collated at the end of the week. Dojo points can be awarded for a number of different reasons including reading, helping others and hard work.

Please note that I do not respond to messages sent through Class Dojo.



Music and P.E.

Music — Mr Keysall

P.E. — Coach Kyle



KIRFs

KIRFs or Key Instant Recall Facts support the mental skills and key knowledge that children need to secure for Maths. They include number bonds and times tables, and are particularly useful in developing confidence and understanding in addition, subtraction, multiplication and division.

These will be sent home every half term so that you can support your child with building fluency with these concepts. This will enable them to apply this knowledge to other areas of Mathematics and to develop higher order thinking, problem solving and reasoning.

We recommend that you spend 5-10 minutes a day working on these at home.



KIRFs continued...

This is the Year 1 KIRF for Autumn Term 1. These will be displayed in the classroom and sent home for your child to practice.

Key Facts				Key Vocabulary
1+1=2	11+1=12	1-1=0	11-1=10	15 add 1
2+1=3	12+1=13	2-1=1	12-1=11	12 subtract 1
3+1=4	13+1=14	3-1=2	13-1=12	What is 1 more than 11?
4+1=5	14+1=15	4-1=3	14-1=13	What is 20 take away 1?
5+1=6	15+1=16	5-1=4	15-1=14	What is 1 less than 15?
6+1=7	16+1=17	6-1=5	16-1=15	10 plus 2
7+1=8	17+1=18	7-1=6	17-1=16	
8+1=9	18+1=19	8-1=7	18-1=17	
9+1=10	19+1=20	9-1=8	19-1=18	
10+1=11	20+1=21	10-1=9	20-1=19	

They should be able to answer these in any order, including missing number questions eg $19 + _ = 20$ or $20 - _ = 19$



Homework

Homework will all be handed out on Thursday and placed on the homework page on the website.

Please cut and stick the Homework into the Homework books.

The homework due dates are as follows:

English — Monday

Mental Arithmetic Test — Tuesday(Autumn 2)

Maths — Wednesday

Spelling Test — Thursday(Autumn 2)



Homework continued...

To support your child, please ensure that they understand the activity and then encourage them to complete the activity as independently as possible.

Please have your child complete the homework in pencil.



Topics

Autumn: How am I making history?

What is it like here?

Spring: How have toys changed?

What is the weather like in the UK?

Summer: How have explorers changed the world?

What is it like to live in Shanghai?



Nativity Performance??

Year Two will be leading the EYFS and KSI Nativity performance this year which we are very much looking forward to.

We will start to organise this in October and will let you know your child's role and what costume they will need.

The date for KSI parents to watch is Wednesday 13th December.



Independence in Year 1

Year 1 is a big transition year. In order to support children in their learning and development, it is important for the children to develop their independence.

Some helpful things that you can do at home are:

- Encourage your child to take their jumpers off, put them on and find them!
- Encourage your child to complete an activity independently or have a go before asking for help.
- Encourage your child to follow instructions independently.



Contact

If you need to contact me during the year, please feel free to email me at:

classenquiries@stmarys.hounslow.sch.uk



Questions

If you have any further questions, please refer to the contact slide in the presentation.

Thank you all for listening and I look forward to a positive academic year with the class.