

# STOKE FLEMING PRIMARY SCHOOL



Volume 1 , Issue 12

*Set sail in the world...*

**Date: 05.12.25**

## DATES FOR THE DIARY

### DECEMBER

**8th**—EYFS Nativity 2pm

**9th**—EYFS Nativity  
9:30am

**10th**—Christmas Lunch

**11th**—Bags2School  
collection

**12th-14th**—Stoke  
Fleming Christmas Tree  
Festival

**17th**—Phase 2 Panto  
Stoke Fleming Village  
Hall 5pm

**18th**—Phase 3 Carol  
Service St Peter's  
Church 5pm

**19th**—Break up for  
Christmas holidays

### JANUARY

**5th**—Back to School

### FEBRUARY

**16th-20th**—half term

### MARCH

**16th**— Non Pupil Day

Dear Parents/ Carers,

It truly is a magical time of year in primary schools, and Stoke Fleming is no exception! Christmas rehearsals are now in full swing, and the hall has been filled with festive songs, big smiles, and plenty of excitement. The children have been working incredibly hard, and I can't wait for you all to see what they've been preparing.

A quick reminder that there is still time to buy raffle tickets for our Christmas Draw. We have some fantastic prizes lined up, and it's a wonderful way to support the school and the Friends of the School in their vital work.

Next Wednesday (10<sup>th</sup> December) is our Christmas Lunch and *Dress for Dinner Day*—a wonderful opportunity for the children to come to school in their most festive, fancy, or fun outfits. We're also expecting a very special visitor... Last year he arrived by tractor, but what will his mode of transport be this time? Keep your eyes peeled for Father Christmas himself!

If anyone has or rides a motorbike and would like to join in welcoming Father Christmas this would entail following him for some laps around the school carpark for the children who will be watching.



This will only be for approximately 15 minutes maximum at around 11am, if anyone can spare the time.

If you would like to pop some tinsel on your bike and join in the festivities, pop a message to Emily on 07875 403 911.

Wishing you all a wonderful weekend,  
Mr Harrison



## Inside this issue:

This week	1
Celebration	2
Class Discovery	3
EYFS Nativity	4
December 2025	5
Christmas Lunch	6
Christmas Raffle	7&8
Thank you	9
Bags2School collection	10
Notices	11-15



**Our vision:** *Set sail in the world*  
**Our Values:** *Considerate, Confident, Creative and Cultured.*

**Our mission:** *Our 'charted curriculum' inspires everyone to explore, dream and discover the world around us*





# Celebration



## Attendance Matters

This week's attendance by class:

**Challenger - 99.74%**

**Invincible - 97.12%**

**Victory - 97.41%**

**Discovery - 99.07%**

**Endeavour - 95.97%**

WOW! Well done

### **Challenger**

Best attendance this week!

School attendance for the year  
so far is currently **97.37%**

**Please keep supporting our attendance  
target of 96% or above**

## Certificate of Excellence



*Challenger— Amelia & Buzz*

*Invincible— Florence & Ruby*

*Victory— Jack C & Margo*

*Discovery— Dot & Kit*

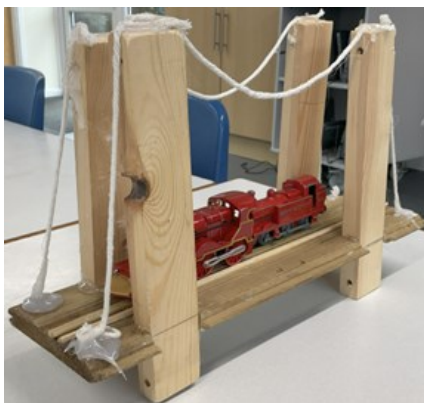
*Endeavour— Joshua & Nixie*





# Class Discovery

Class Discovery have thoroughly enjoyed their Design Technology topic, this half term. They have designed, created and tested their own bridges.

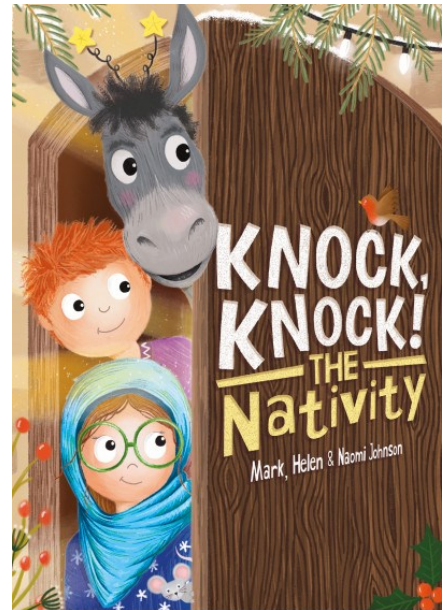


Christmas has begun in class Discovery! We have been enjoying practising our Christmas carol service songs and look forward to seeing you all there.



# EYFS Nativity

Class Challenger and Little Lanterns will be performing 'Knock Knock The Nativity' on Monday 8th @ 2pm & Tuesday 9th Dec @ 9.30am in the school hall. Families will be provided with 2 tickets for these performance. There will be no charge for these tickets but instead a collection for Charity at the end of each performance.



Stoke Fleming Primary School

## Nativity Play



8<sup>th</sup> December 2pm  
9<sup>th</sup> December 9.30am

Refreshments will be served at each performance

Please join us for tea, coffee, mince pies and treats for the little ones to enjoy!

cash only all money raised goes straight back to the school







# December 2025



## School Christmas Lunch

The school Christmas lunch will be on  
Wednesday 10th December, please  
remember to book if your child would like



the Christmas Lunch. Children can come to school 'Dress to Impress'/  
Christmas Jumpers instead of wearing their school uniform on this day.

## Phase 2 Pantomime

This Christmas, Phase 2 will be performing  
another Roald Dahl Musical Pantomime of  
Little Red Riding Hood on Wednesday 17th  
December 5.00pm - 6.00pm @ Stoke Fleming  
Village Hall.



## Phase 3 Carol Concert

This Christmas, Phase 3 will be performing their  
Carol Concert on Thursday 18th December  
5.00pm - 6.00pm @ St Peter's Church







# **CHRISTMAS LUNCH**



**WEDNESDAY 10TH DECEMBER 2025**

**ROAST TURKEY  
OR  
QUORN FILLET  
SERVED WITH  
PIGS IN BLANKETS  
ROAST POTATOES  
CARROTS, SPROUTS  
& GRAVY**

**ICE CREAM**

**COST £3.10**





FRIENDS OF STOKE FLEMING  
PRIMARY SCHOOL

# CHRISTMAS RAFFLE

**LOTS OF GREAT PRIZES!**

**BUY YOUR TICKETS VIA PARENTPAY**

Draw to be held at school  
on Friday 12<sup>th</sup> December  
2025







## Christmas Raffle Prizes

Afternoon Tea Royale for two at the Dart Marina Hotel

Salcombe Gin

Breakfast at Blackpool Sands for two

The White Company Gift Set

Wine Hamper

Sauna Experience

Bula Voucher

Kayaking Voucher

Breakfast at Bayards Cove Hotel for two

Dartmouth Candle Co Gift Set

Dartmouth Bees Hamper

Olive Pots Voucher

Wanderlust Wares

Family Swim Voucher and lots more.....

Plus the money can't buy ones for the children...

Win

“A non uniform day” JUST for your child's class

And “a first in line at lunch” for a WEEK for your child's whole class!





## Class Discovery Cake Sale

“Thank you to everyone who baked, bought and ate cake at Class Discovery’s recent cake sale- we raised £126 for the class which they are thrilled about!”



THANK YOU!



# Bags2School

## BAG 2 SCHOOL

### FREE FUNDRAISING FOR SCHOOLS

In partnership with your school or organisation



#### Stoke Fleming Primary School

Bag 2 School is a company that specialises in the reuse and recycling of good quality second-hand clothing and we have arranged to make a collection from your school. All the bags will be weighed and you will be paid for the total weight collected. Remember, the more you collect the greater the benefit to your school.



PLEASE USE YOUR OWN BAGS (THERE IS NO LIMIT).

When the clothes have been removed from the bag the plastic will be packed and sent for recycling.

***We are collecting good quality items for RE-USE:***

**Men's, ladies' & children's clothing, paired shoes, handbags, belts & accessories.**

**(No uniforms, workwear, pillows, duvets or pieces of fabric please)**

***The more we weigh the more we pay!***  
***Extra bags are welcome - there's no limit***

***Please return your Bag2School on:***

	Thursday 11 <sup>th</sup> December 2025 by 9am	
--	--	--



01609 780 222



[www.bag2school.com](http://www.bag2school.com)



[helpdesk@bag2school.com](mailto:helpdesk@bag2school.com)





# CHRISTMAS SING-ALONG

led by Lucy Hingston

PRESENTED BY THE 8 PIECE ENSEMBLE

## BRASS MONKEYS

at

### STOKE FLEMING VILLAGE HALL

**SATURDAY**  
**13th DECEMBER**  
**7.30 pm**

Doors open at 7.00pm

Tickets £10 - from Stoke Fleming Village  
Shop or Tel Jill on 01803 770045

All proceeds towards Stoke Fleming Village Hall

Refreshments and Licensed Bar



**STOKE FLEMING VILLAGE HALL FUNDRAISER**

# *The Twelve Hampers Of Christmas Raffle*

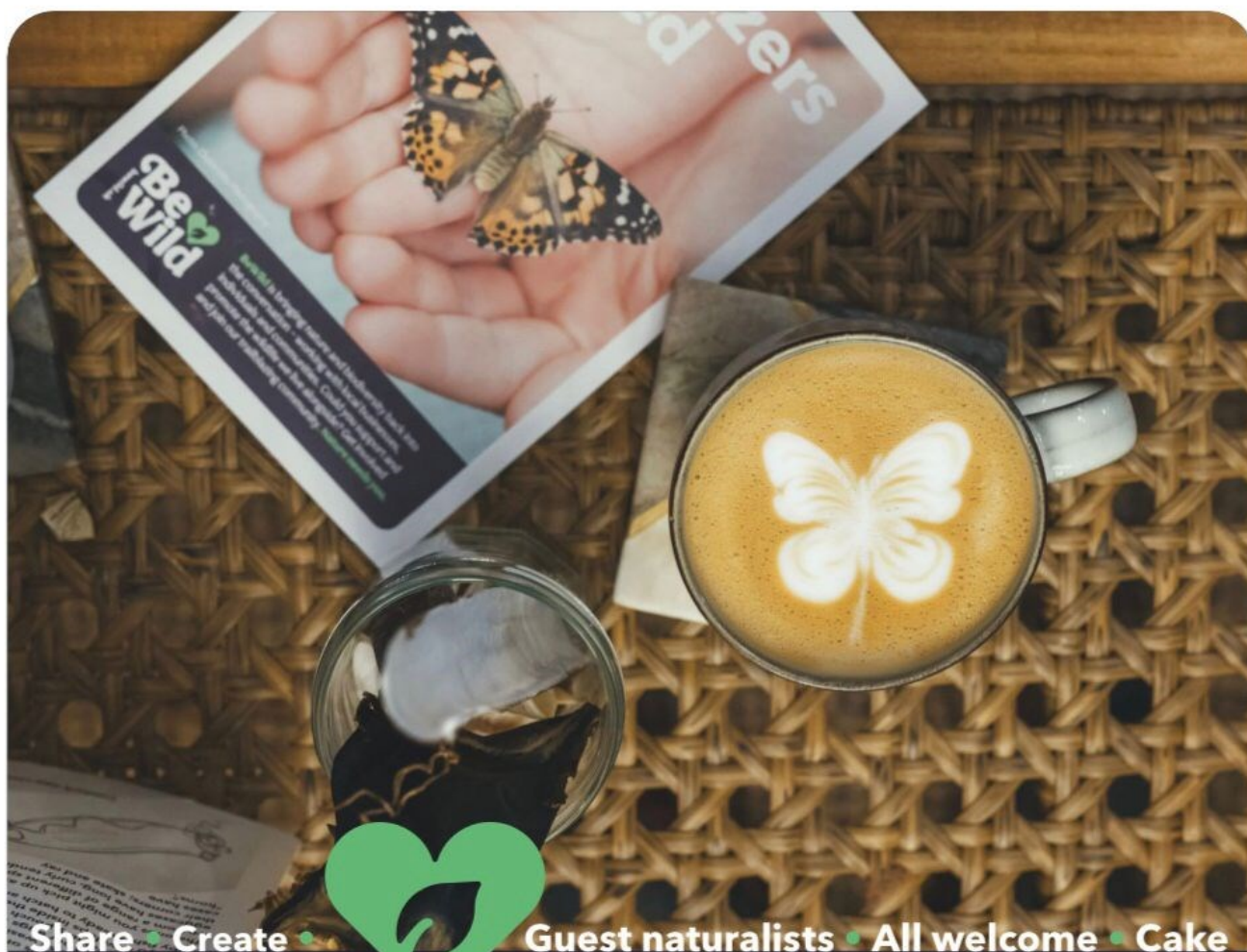
**£1 per  
ticket**  
(£5 per book)

*Here's your chance to win one of  
12 wonderful seasonal hampers  
each themed around a different  
aspect of Christmas Day.*



**Raffle tickets available from The Village Shop,  
The Green Dragon or Jill on 01803 770045  
Draw date: Saturday 13<sup>th</sup> December 2025  
at the Hall's Sing-Along Christmas Carol Concert.**





Share • Create •

Guest naturalists • All welcome • Cake

# Wild Finds @ COASTAL TRAIL

6 SOUTH EMBANKMENT DARTMOUTH TQ6 98H

**First Sunday of every month, 10am**



Join **BeWild** at the **COASTAL TRAIL** café every month to share local wildlife wonders found on walks, in hedgerows, or along the shore. Together, we identify, photograph, draw, and add each discovery to a growing community collection telling our nature story. **Eat cake and get involved!**





## **WildFinds** @COASTAL TRAIL

 **First Sunday of every month, 10am**  
 **Coastal Trail café, Dartmouth TQ6 9BH**

Bring your finds, your questions, and your curiosity – and join us at **WildFinds** each month to uncover the hidden stories of the wild world!

Step into the wild side of **Dartmouth** and share your **WildFinds** – a new community nature stories club led by **Victoria Benns**, naturalist and founder of **BeWild** and **Wild About Nature**. Each month we'll gather at the **COASTAL TRAIL** café to share the treasures and tales of the natural world – the feathers, shells, skulls, seeds, and stories we've discovered outdoors. We'll explore what they tell us about the hidden lives of the creatures and places around us.

Expect **hands-on exploration**, **guest naturalists**, and a growing **community collection** of drawings, notes, photos, and fascinating finds. One month we might be identifying skulls or studying seaweed; the next, tracing migration routes or learning the language of birds.

It's creative, friendly and open to everyone. No expertise needed, just curiosity.

Come along to **WildFinds**, maybe bring something that's caught your eye, or share the finds of others, and be part of a journey of discovery that's unfolding right here in our community. Together, we'll uncover the stories of the wild world that lives all around us – and maybe, just maybe, see our home in a whole new light.

**WildFinds.**  
Every find has a secret to tell.

  
 bewild.uk

Join us



Photo credits:  
Claire Gillo  
Photography,  
Victoria Benns





# Our next chapter starts with you.

**Help shape the future  
of Devon's libraries.**

**Your voice matters.**

[devon.cc/devon-libraries](https://devon.cc/devon-libraries)

Devon  
County Council



Complete the  
survey by  
scanning here:

