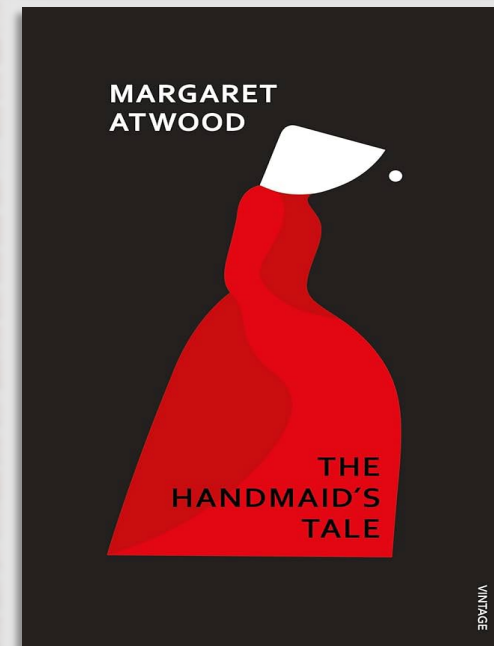
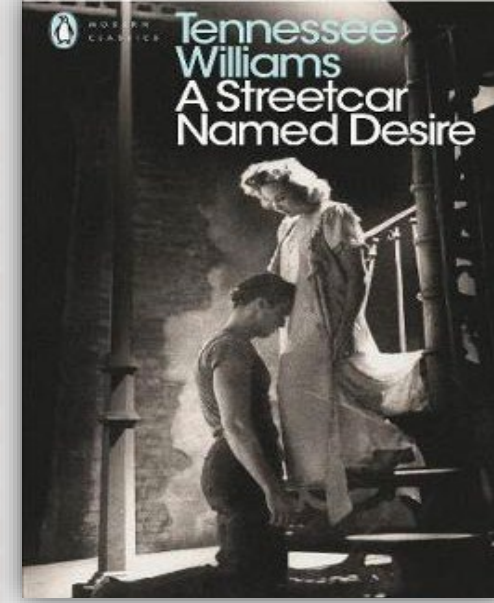
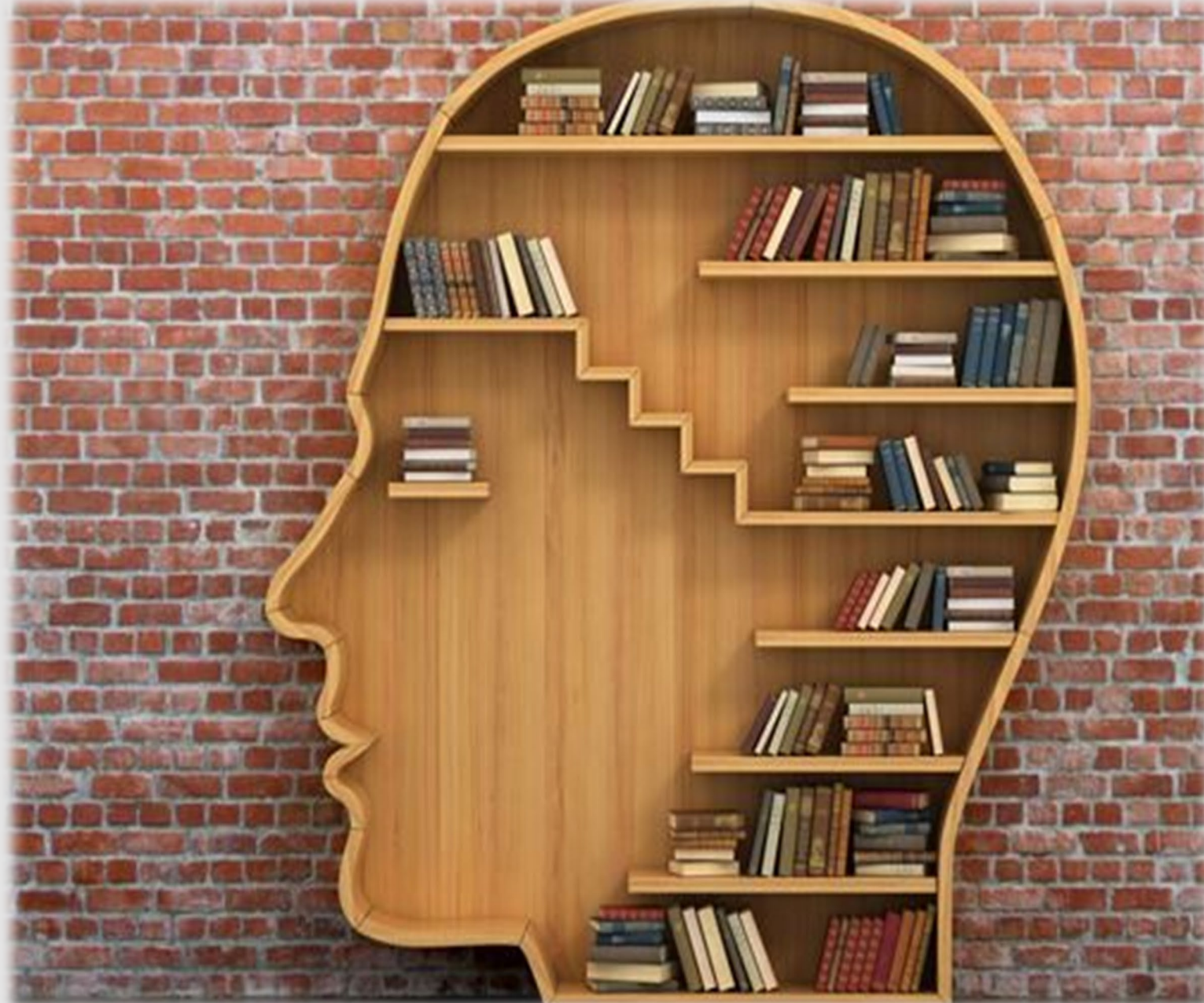
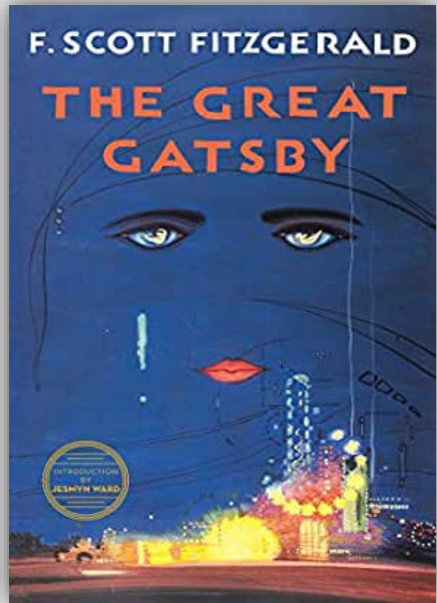


AQA A Level English Literature



AQA A Level English Literature

Literature invites us to question ourselves, others and the world around us:

What motivates cruelty?

Can being in love both nurture and wound us?

Do men and women respond differently to love?

Are we in control of our own destinies?

Do these issues interest you?

AQA A Level English Literature

- Analysis and exploration of literary fiction texts, including poetry, plays and prose.
- Texts span a range of time periods and genre, including poetry and Shakespearean drama. Texts will be chosen by the teachers based on current choices in the specification. Current texts include *Othello*, *The Handmaid's Tale*, *The Great Gatsby* and *Feminine Gospels*.
- All assessments take the form of analytical essays. The course is made up of 80% exam and 20% NEA.
- For the NEA, students write analytically about two texts in comparison. There is an element of choice in these texts, which are read and explored independently.

