

# 22.11.24 - Autumn 2 Newsletter



## Sherdley Values

At Sherdley we help children to meet their **potential** by having high **aspirations** for their future. We provide a **challenging** curriculum that builds **resilience** in our pupils. Above all, we care for every member of our school; everyone is welcome in the Sherdley **family**.



## Dates for your Diary

### November

**25.11** - Year 4 String Lessons

**29.11** - 3W Spanish Lesson @ Sutton Academy

### December

**02/03/04.12** - Breakfast with Santa

**05.12** - Year 5 Visit to the Mosque

**06.12** - 3W Spanish Lesson @ Sutton Academy

**09.12** - Year 3/4 Carol Concert

**10.12** - Year 5/6 Carol Concert

**10.12** - Year 5/6 Athletics Event @ Sutton Academy

**12.12** - School Christmas Dinner

## Attendance

Attendance at Sherdley has been excellent this academic year - we really appreciate everyone's efforts to be in school on time every day. Just look how many classes have met our target of 96%. Some are almost at 100% - an incredible effort!

## Sherdley Primary School - Attendance League

11 Nov 2024 - 15 Nov 2024

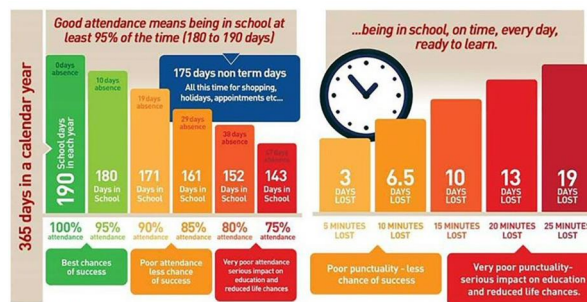
Class	Attendance
4W	99.33%
6J	98.89%
1K	98.33%
5M	98.33%
RD	97.67%
6C	97%
2F	96.9%
3W	96.4%
2S	96.33%
5R	96.21%
4O	95%
1W	94.8%
3H	93.93%
RE	93.67%

Being in school is incredibly important. Even missing a small amount of time from school can make a big impact on learning.

Research shows that good school attendance is the highest predictor of academic and future success and that attendance in the early and primary years directly impacts success in secondary school. Research shows that:

- Higher attendance throughout primary school leads to better GCSE results
- Persistent absences in primary and secondary school lead to lower attainment: children who miss more than 10% of school sessions have lower average attainment

- Absence rates are directly linked to GCSE attainment: In 2019, children who didn't achieve pass grades in English and maths had higher absence rates than those who did.
- Absence rates affect achievement: 90% of children with attendance rates below 85% in primary school failed to achieve five or more good GCSE grades
- Absence rates affect the likelihood of staying in education: children with persistent absences in primary school are less likely to attend high school regularly and are very unlikely to stay in education after the age of 16.



## Year 6 Prefects & School Council

At Sherdley, we value children aspiring to do their best and to help the school community. Two ways we do this are through choosing prefects in Year 6 and running our School Council.

Year 6 prefects had to write a letter of application and meet Mrs Bennett for an interview. All the applicants did exceptionally well but we have selected our new team. You will notice them standing out with their all-green ties. They help us around school, keeping children safe, playing with pupils in Key Stage 1, supporting at school events and generally setting a high standard in all they do.

Our School Councillors have been voted in by their class, helping children to engage in the important British Value of Democracy. Our council has met to discuss key issues for the school, helping choose charitable causes to raise money for and giving their class a voice in how the school is run. You will agree this is an important job!

Well done to both our new teams - we will post more about their work in school throughout the year.

## Breakfast with Santa

For the 2nd year running School have organised a Christmas Breakfast to fundraise for our KS1 playground refurbishment. Pre-school, Reception and KS1 will all have a visit from Santa during their breakfast and KS2 pupils will design/colour in a wooden bauble decoration.

The form to choose your breakfast will go live this morning and will close at 9am on Wed 27th Nov so please do not delay in completing this if you want your child to attend. Payments will be available on School Money - the cost is £4 per child and all payments need to be made by 6pm on Thurs 28th Nov 2024. After this date no additions can be made to the numbers unfortunately



## Christmas Performances

You should have received information recently about our school's Christmas performances:

- EYFS Nativity Performances - Monday 16th December @ 9:15am and 2pm
- KS1 Nativity Performance - Tuesday 10th December @ 2pm and Wednesday 11th December @ 9:30am
- Year 3 + 4 Carol Concert - Monday 9th December @ 1:30pm
- Year 5 + 6 Carol Concert - Tuesday 10th December @ 1:30pm

Each event specifies how many adults may attend. This is unfortunately due to limited space. Please check the information provided carefully to ensure you have the correct amount of adults attending.

## Outdoor equipment before the school day

Due to a small number of ongoing issues linked to the use of our outdoor playground equipment on the Key Stage 2 yard (climbing frame, balance wall etc), **we can no longer allow children to play on these before school starts.**

Parents - we regrettably ask that you **do not allow** your children to play on this equipment, supervised or not. Thank you.

## Road Safety Team

This week we have had members of the St Helens Council Road Safety Team speaking to children. They have been discussing the importance of being safe while crossing roads, in particular highlighting the use of mobile phones as a distraction. Please speak with your child about the visit and help reinforce the message of staying vigilant and being careful at all times.

If you'd like more information on road safety, please use [this link](#) to find out more.

## Can you help with our updated School Reading Area?

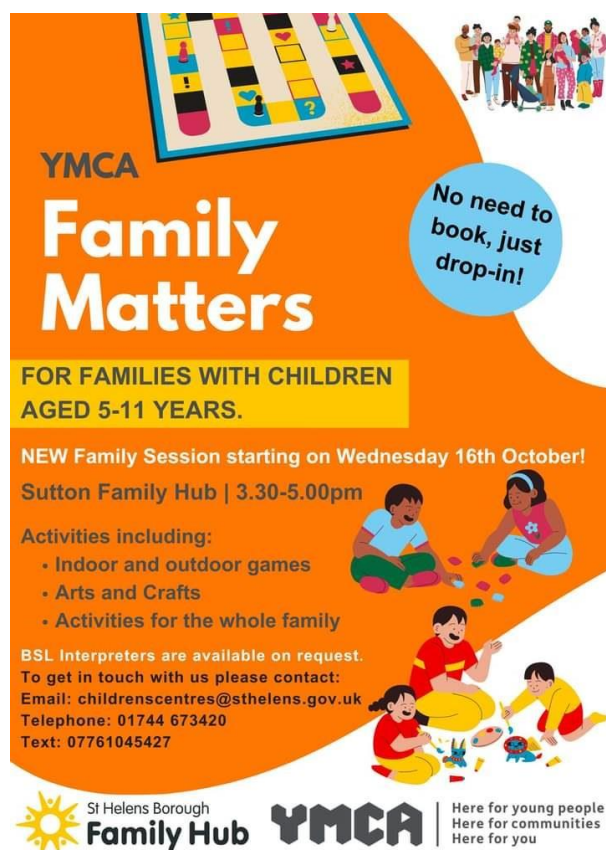
We are redecorating part of the linkway corridor as a new Key Stage 1 Reading area! The theme is 'Growing together' and will be an outdoor, forest and nature theme. We want to ask if you have anything you would be willing to donate to help make this a really special area for our young readers.

Do you have to spare:

- Decorative plants or flowers
- Green netting
- Fabric in any shade of green
- Any 'botanical accessories'
- Fake grass
- Any real potted plants that need a new home

If you can spare anything, please drop your items off at the school office. Thank you in advance!

## YMCA Family Matters



The poster features a bright orange background. At the top left, there is a colorful board game. To the right, a group of diverse people is shown. A blue speech bubble contains the text 'No need to book, just drop-in!'. Below this, a yellow box states 'FOR FAMILIES WITH CHILDREN AGED 5-11 YEARS.' The main title 'YMCA Family Matters' is prominently displayed. Further down, it announces a 'NEW Family Session starting on Wednesday 16th October!' at the 'Sutton Family Hub | 3.30-5.00pm'. A list of activities includes indoor and outdoor games, arts and crafts, and family activities. Contact information for BSL interpreters and general inquiries is provided at the bottom. The footer includes the St Helens Borough Family Hub logo and the YMCA logo with its tagline.

**YMCA**  
**Family Matters**

**No need to book, just drop-in!**

**FOR FAMILIES WITH CHILDREN AGED 5-11 YEARS.**

**NEW Family Session starting on Wednesday 16th October!**  
**Sutton Family Hub | 3.30-5.00pm**

Activities including:

- Indoor and outdoor games
- Arts and Crafts
- Activities for the whole family

BSL Interpreters are available on request.  
To get in touch with us please contact:  
Email: [childrenscentres@sthelens.gov.uk](mailto:childrenscentres@sthelens.gov.uk)  
Telephone: 01744 673420  
Text: 07761045427

St Helens Borough **Family Hub** **YMCA** | Here for young people  
Here for communities  
Here for you

## Asda Rewards

We are in the process of signing up for Asda Rewards for school, please consider nominating us and 0.5% of your shopping will be offered to the school via ASDA. To support our PTA, all you have to do is opt-in through the Asda Rewards app, choose our school, shop and scan in-store or shop online at Asda.com.

Between 2nd September and 30th November 2024 – every time you shop with Asda using your Asda Rewards app, Asda will donate 0.5% of the value of your shop to your chosen Primary school. Also, every time somebody opts in to support our Primary school, Asda will give an additional £1 to the school Cashpot. Plus, it doesn't stop there – Asda is also giving £50 to every school to get them started.

It's as easy as 1,2,3

1. Download the Asda Rewards app, register and opt-in to Cashpot for Schools (make sure you have the latest version of the app installed)

2. Choose our Primary School – either searching by name or postcode
3. Shop instore across Asda and George, or online at Asda.com and start filling your Cashpot as you shop

Remember, anyone can sign up – so start spreading the news and raising funds for our school. This initiative is on top of the existing Asda Rewards benefits you get as a shopper – so you won't lose out on any of your own earnings or Cashpot, so everyone is a winner!

### Is my child too ill for school?

It can be tricky deciding whether or not to keep your child off school, nursery or playgroup when they're unwell.

There are government guidelines for schools and nurseries about [managing specific infectious diseases at GOV.UK](#). These say when children should be kept off school and when they shouldn't.

If you do keep your child at home, it's important to phone the school or nursery on the first day. Let them know that your child won't be in and give them the reason.

If your child is well enough to go to school but has an infection that could be passed on, such as a cold sore or head lice, let their teacher know.

[If your child is unwell, click here for guidance as to whether they should be in school or not.](#)



## Safeguarding



*1 - If you have any queries or concerns, our safeguarding team are always happy to speak with you.*

## Contact Us

### **Sherdley Primary School**

Mill Lane

Sutton

St Helens

Merseyside

WA9 4HA

### **Main Office Staff**

Mrs A Duncan - School Business Manager

Mrs K Tilley - Office Administrator

Mrs N Woods - Office Administrator

## Contact Details

Tel: 01744 678683

Email: [sherdley@sthelens.org.uk](mailto:sherdley@sthelens.org.uk)

SEN Contact: Mrs J Stroud

Should you have any questions or enquiries about the school, in the first instance please contact Mrs Duncan, the School Business Manager, and she will be able to assist you. Our main office hours are Monday 8:00am-4:00pm, Tuesday 8:00am-4:00pm, Wednesday 8:00am-4:00pm, Thursday 8:00am-4:00pm and Friday 8:00am-4:00pm.

To speak with our SENDCo please use the main contact number and leave a message or speak with our office staff to be transferred. Please contact the school office if you wish to receive a paper copy of any of the documents or policies found on this website.