

SHERDLEY PRIMARY SCHOOL

NEWSLETTER



Attendance Matters

Attendance Year to Date:

95%

Our Attendance
HERO's last week:

Class 3W 99.6%

*Here, Everyday,
Ready, On time*

A note from Mrs Bennett

In true Sherdley style, this week has been an incredibly busy one - Visits to the library, Ukele and String instrument lessons, Bikeability for year 5, class assemblies, the start of after school clubs and World Book day celebrations.

As a parent myself, I recognise how challenging weeks like this can be for you. Thank you for supporting us and helping to make the week a real success!

We believe that events such as these underpin and support our Sherdley Values as well as offering our children personal development opportunities and considerations for their futures. The fun and enjoyment that the children have experienced is priceless.

Request for Donations!

We are holding our Colour Run fundraising event on the 23rd May and are on the hunt for any water guns that you can donate to school!

Please drop any donations into the school office.





Congratulations to...

Our students who received the following awards this week:

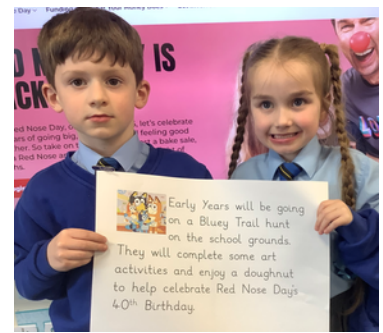
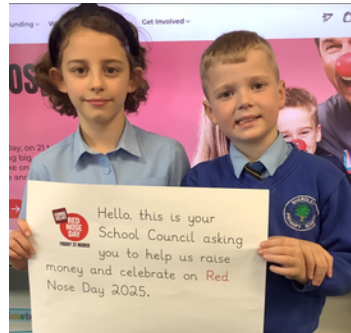
	Hardworker Award	Golden Pupil Award	Writer of the Week
RE	Ava A	Daisy P	Matilda D
RR	Olivia FG	Emily M	Elias W
1K	Ava Grace B	Bobby G	Dolly M
1W	Rhys G	Albie F	Ayda T
2F	Aalayah-Rose G	Sadie R-C	Minnie A
2S	Astrid T	Ethan B	Sam H
3H	Thea H	April K	Esmae C
3W	Lena K	Jayden M	Freddie R
4O	Daisy-Mae R	Alba S	Olivia B
4W	Devon B	Amelia T	Thomas D
5M	Leo H	Joshua C	Nicola P
5R	Ivy M	Charlotte S	Jacob P
6C	Mia G	Bella CW	Daisy L
6J	Stella G	Tyler M	Emily B

We are super proud!

School Council

During school council this week we prepared our resources for Red Nose Day on the 21st March, this included a video to guide children and parents/carers on our plans for raising money:

- Wear something Red
- Buy a Doughnut
- Bluey Trail Hunt for Early Years
- Team Quizzes for Y1-6
- Maths challenges



Friday 14th March – Non Uniform Day

Children are invited to attend school on Friday 14th March in non- uniform in exchange for a donation of goods for the Easter Raffle this could include:

- Chocolate
- Easter Eggs
- Easter related gifts



Parking Reminder

We all want to keep our children safe around school, here are some top tips on how you can make a difference:

- Keep your speed down
- Check for pedestrians and cyclists before opening a car door
- Do not park on zig zag or yellow lines
- Leave enough room on pavements for pedestrians, pushchairs and wheelchairs to get past
- Please be mindful and considerate of our school neighbours

Sherdley Shares

If you are interested in any of the below, please contact the providers directly.

EASTER FOOTBALL CAMP - APRIL

Steve's Easter football camp is designed for beginners who are just starting out right the way to more experience players who are already in a team. Great way to make new friends.

- Skills & ball techniques
- Confidence building
- Penalty shootout
- Fun games & matches

- Shin pads & water essential
- Packed Lunch required



7th, 8th, 14th and 15th April
Ages 6 - 9yrs | 10.30am - 1.30pm

9th, 10th, 16th and 17th April
Ages 9 - 12yrs | 10.30am - 1.30pm

Tournament Session Friday 11th April
Ages 7 - 10yrs | 10.30am - 1.30pm

DBS ENHANCED

For more information contact
Steve Pagendam on 07492091999
or on Facebook Steven Pagendam

Walmesley Rd Fields
Eccleston Wai05JR



CAMPS 2025 INFORMATION

EASTER CAMPS

WEEK 1: 7th - 11th April (5 day week)
Alderley Edge School for Girls, SK9 7QE
Lancaster University Chaplaincy, LA1 4YW
St Pius X Catholic Prep School, Preston, PR2 8RD

WEEK 2: 14th - 17th April (4 day week)
AKS Prep School, Lytham, FY8 1DT
The King's School, Chester, CH4 7QL
Eccleston Lane Ends School, Prescot, L34 2QN

NEW VENUES THIS EASTER!
8.30am - 5pm each day
Suitable for all primary school children
£180 for 4 days | £225 for 5 days
(This early bird price until 23rd March)

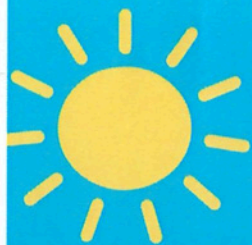
BOOK ONLINE NOW!!
at northengland.madscience.org
Call 01772 628844 Email office@madsciencenw.com

Don't forget to bring your packed lunch!

Fully insured, highly trained, DBS checked presenters

Tax free childcare & childcare vouchers accepted!





WALK & TALK

**HOME
START**
St Helens

Our sessions are designed to reduce isolation, help parents like you and your children to meet new people and to improve your overall wellbeing.

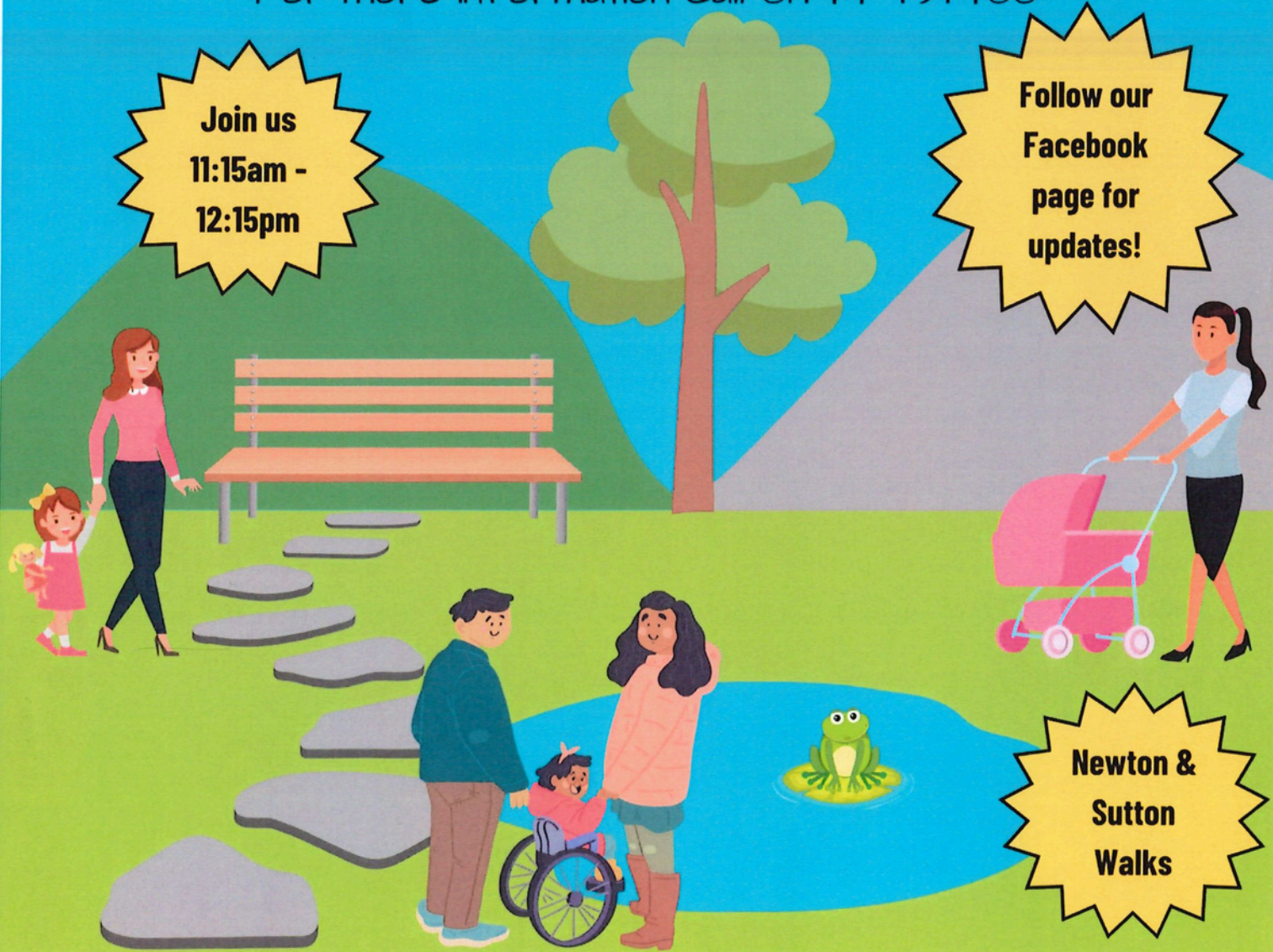
Newton-le-Willows Family Hub, Patterson Street, WA12 2PZ
1st Monday of every month (excluding school holidays)
(Starts April 2025)

Sutton Family Hub, Ellamsbridge, Sutton, WA9 3PY
3rd Tuesday of every month (excluding school holidays)
(Starts April 2025)

For more information call 01744 737400

Join us
11:15am -
12:15pm

Follow our
Facebook
page for
updates!

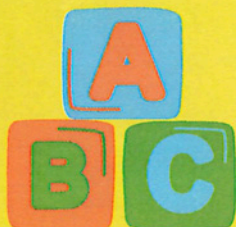


Newton &
Sutton
Walks

Would you and your child benefit from some practical support before they start school?

SCHOOL READINESS PROGRAMME

Parr Children's Centre 01744 671788



Age 2 -
School Starter



Sessions include:

- Playing & sharing with other children
- Following simple hygiene
- Getting dressed & putting on shoes
- Arriving at school on time
- Eating and drinking unaided
- Coping away from parents/carers
- Using the toilet
- Recognising their own name

Specially trained Home-Start Volunteers will provide you and your family with weekly support!



If you would like to take part in the Programme please ask your School, Nursery, Health Visitor or Keyworker to complete a St Helens Children's Centre Service Request Form.



BEING A PARENT 2-11

A course for parents and carers led by parents.

Join the Family Hub Parent Group Leaders for an 8 week parenting course covering:

- Being 'good enough'.
- Feelings.
- Appropriate boundaries.
- Child - led play.
- Plus more.

**Starting : Tuesday 13th
May 2025
for 8 weeks**

**Venue: Parr Children's
Centre, WA9 2AP**

"It's so nice to talk to other parents, take a bit of time to recharge and learn tips to help my family".

To Book or find out more

Call: 01744 671 788

Text: 07761 045 427

Email: parentingteam@sthelens.gov.uk

Ask at Family Hub reception



EMPOWERING
PARENTS
EMPOWERING
COMMUNITIES

ST HELENS
BOROUGH COUNCIL

BSL Interpreters are available on request.

To get in touch please contact:

Telephone: 01744 671788



**Funded by
UK Government**