

School Newsletter

W/C 20th October 2025

Monday 20th

Year 6 PGL

Year 1: PSD Multi-Sports (3.15—4.15)

Year 3: PSD Football (3.15—4.15)

Coding Club: Year 1—Year 6 (3.20—4.15pm)

NO Running Club

Tuesday 21st

Year 6 PGL

Year 2: PSD Football (3.15pm-4.15pm)

Year 4, 5 & 6: PSD Girls' Football (3.15pm– 4.15pm)

Irish Dancing: Rec—Year 6(3.15pm—4.10pm)

Wednesday 22nd

Year 6 PGL

3F Collective Worship

Year 3,4,5 & 6: Tennis (8.00-8.45am)

Year 2: PSD Multi-Sports (3.15-4.15pm)

Year 4: PSD Football (3.15pm-4.15pm)

Thursday 23rd

Flu Immunisation

Year 1: PSD Football (3.15pm-4.15pm)

Year 5 & 6: PSD Multi- sports(3.15-4.15pm)

Zumba (3.15-4.15pm)

Spanish Club: Year 1– Year 4 (3.15– 4.15)

Irish Music Lessons: Year 2 (2.45—3.15pm) Year 3 +

(3.15 –4pm) Advanced (4pm—4.45pm)

Normal school pick-up time 3.15pm

Friday 24th

Inset Day– School Closed

SAFEGUARDING

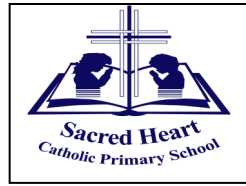
***If your child is unable to attend a SH or PSD club, please e-mail clubs@shpsruislip.org ***



SACRED HEART CATHOLIC PRIMARY SCHOOL

T: 01895 633 240

E-Mail: office@shpsruislip.org



Spring MENU
Week 2

At Sacred Heart this week

It was wonderful to have our first mass of the year, celebrated by Fr James. It was an opportunity to reflect on the half term we have had and pray for the year ahead.

Our Assistant Chaplains were commissioned into their role, and we are so proud of the way they have taken on this very special responsibility in our school. They have already led prayer sessions in the chapel and the rosary in classrooms. Congratulations to them all. Cecilia, Conor, Maya, Ryan, Alexander, Livia, Kyrrah, Gabriella and Oliver.



Today, our Reception children, siblings and parents joined us for their welcome liturgy, where we blessed their ties and officially welcomed them as part of the family of Sacred Heart School. We were so proud of them, as they prayed and sang with joy.

Collective Worship

3HW shared with us the importance of celebrating the mass. Through linking this sacrament to scripture text and our everyday lives, we reflected on how we can act in positive ways to everyone we meet. Thank you to 3HW and Mrs. Walsh.

Through their One World October research, 6F shared with us information about the Windrush generation, reflecting on the many skills and talents they brought to the UK but also the struggles they have faced. In focusing on this, we were reminded how Jesus welcomed and valued all people and we should follow his example. Thank you to 6F and Ms. Fahey.

To conclude One World October, we invite all children to wear a small item of colour with their uniform (eg. colourful socks, hairbands) on Thursday 23rd October, and we will have a whole school assembly celebrating our wonderful diversity and all we have learned and shared this month.

Next week our Year 6 pupils will be heading off to PGL. We wish them a safe journey and know that they will enjoy creating happy memories together.

Please be reminded that school is closed next Friday for INSET. Wishing you a wonderful weekend,
Miss Morahan & Mrs Stockwell

NOTICES:

Parents' Consultation Meetings

Meetings will take place on;

- Tuesday 11th November - 3.30 - 6.00pm - In person / in school
- Thursday 13th November - 1.45 - 4.45pm - In person / in school

Please note school will close at the earlier time of 1.30pm on Thursday 13th.

Further details regarding booking appointments will be circulated nearer the time.

Donation of toys

If you are having a clear out over the half term, please consider us for the following items, which we will use at playtimes -

Grocery shop/café,

- plastic plates/knife/fork/spoon, plastic food items, wooden spoons for mixing, mixing bowls

Animal hospital

Any plastic or hard-wearing items for doctor/ vet kits.

Small world

Dinosaurs, plastic animals - safari, farm or other themes

Off cuts of Astro turf/fake grass

Small chalk boards

Nursery 2026-2027 Applications

If you have a child born between

1 September 2022- 31 August 2023

You can apply for a Nursery place by Friday 30th January 2026

For full details, key dates and to apply online, visit

[Nursery | Sacred Heart Catholic Primary School](#)

NOTICES:

Nursery + Reception Parents Social - THANK YOU!

Thank you to all those who joined us for our **Nursery + Reception Parents Social** on Wednesday night! We had a wonderful turnout and were delighted to see so many mums and dads join us!! The bingo and Heads + Tails games were great fun - well done to Priya and Valerie who both won a bottle of Prosecco! Thanks again for supporting the PTA, it was great to meet with so many new (and existing!) parents!!



Reception + Year 3 Discos

Date: Thursday 23rd October 2025

Location: Hesdin Hall, Church of the Most Sacred Heart, Pembroke Road, Ruislip HA4 8NN

📅 **Reception:** 4:30pm - 5:45pm

📅 **Year 3:** 6:00pm - 7:15pm

Online ticket sales will close on Wednesday 22nd October! Don't forget to purchase your tickets here!: [Sacred Heart PTA](#)

PTA Quiz Night

Location: The White Bear, Ickenham Road, Ruislip

📅 **Reception:** 7:30pm

Join us for a night of laughter, great conversation and a buzzing atmosphere as we come together to support our school community! Whether you're coming for the cause, the company or a well-earned night off, this is your perfect excuse to let your hair down.

Book your ticket now: [Sacred Heart PTA](#)

Please text your team name and number of people in your team to the PTA on 07810 890 679.

Reception WhatsApp groups:

If you are a new Reception parent and have not yet joined your class WhatsApp group and would like to, please join here to keep up to date with the latest information:

📅 <https://chat.whatsapp.com/CtDqt1f4mkk9jk4wR8m0fD>

📅 <https://chat.whatsapp.com/K2sLanH8laQ72f0ld3BP7g>

📅 <https://chat.whatsapp.com/Efe1huUVxfDHVYhHgxcDwd>

Thank you!

Sacred Heart PTA team

NOTICES:

Nursery 2026-2027 Applications

If you have a child born between

1 September 2022- 31 August 2023

You can apply for a Nursery place by Friday 30th January 2026

For full details, key dates and to apply online, visit

[Nursery | Sacred Heart Catholic Primary School](#)

Design Your Dream Bike — Art Competition!

This October, pupils across Hillingdon are invited to take part in a fun and imaginative art competition: **Design Your Dream Bike!**

Whether it's wings, rocket boosters, fairy dust, hover wheels or magical frames — there's no limit to creativity. **With an extended deadline, this could be a great activity for children to do over the half term break. How to Enter:**

Pupils draw their dream bike using any traditional art materials (no digital art or models).

The more creative the designs the better.

Scan or photograph your child's drawing.

Email it to stars@hillingdon.gov.uk with subject **"Dream Bike Comp"**

Include the pupil's **name, age, and school**

EXTENDED Deadline: Friday 7th November

Prizes to be won!

Winners from KS1, KS2 and KS3 will have their dream bike designs professionally recreated, printed in A3, and beautifully framed for them to keep — plus, they'll receive a fitness tracker watch to keep them moving long after the competition ends! Every entrant will also receive a STaRS Certificate to celebrate their efforts.

This competition is part of **Walk to School Month** and **Cycle to School Week (13–17 Oct)** — encouraging our children to travel actively, stay healthy, reduce congestion, and think creatively about how they move.

Let's get our children/students dreaming big — and moving happily! 🚲

PREVIOUS NOTICES:

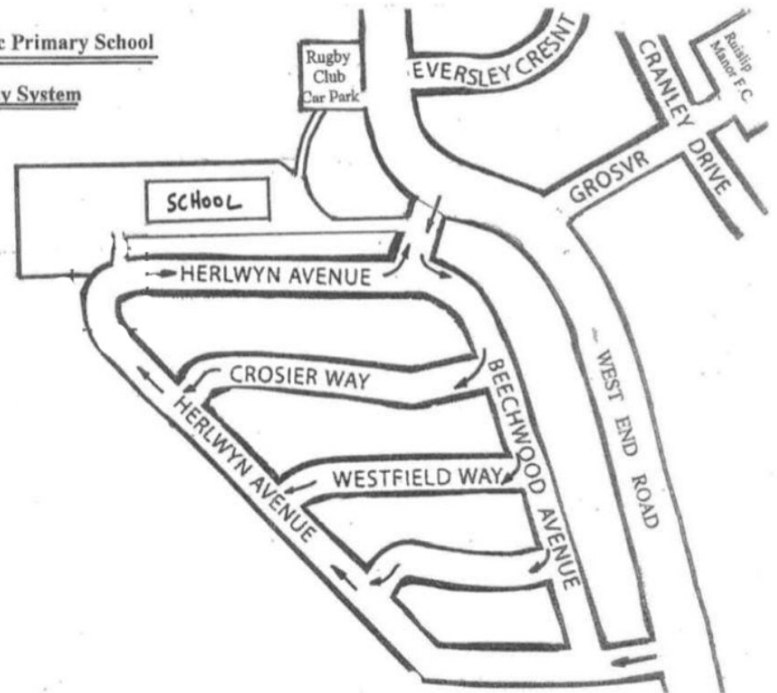
Traffic Congestion:

Please note to avoid traffic congestion at the back of the school, parents kindly adhere to a one way system as outlined in this map to assist the flow of traffic.

Please also be reminded to park courteously, not over or blocking our neighbours driveways or on yellow lines.

Sacred Heart Catholic Primary School

Map to show One Way System



LATE ARRIVALS: Please ensure your child has **everything** they need for the day ahead, including raincoats, water bottles, books, after school kits and snacks. **Late items are a disturbance to teaching.**

PARKING:

Please DO NOT block or park across residents' driveways.

Please adhere to the one-way system to help the flow of traffic.

Do not park in the disabled parking bays, unless you have a valid disabled badge.

SCOOTERS & BICYCLES

Children are not permitted to ride scooters and bicycles on the school premises.

Safeguarding

The wellbeing of our children is of paramount importance to all staff. Should any person (parent or staff) have a concern regarding a child's wellbeing, please inform one of the school's designated safeguarding team (Miss. Morahan, Mrs. Stockwell, Mr Wright or our Designated Safeguarding Governor, Mrs Wloch). In cases where school staff have concerns, they have a duty to discuss the issue with Social Services to seek further advice. This is the statutory obligation of all schools.

SPORTS NEWS

Running club

Congratulations to our Runners of the Week –
brilliant attitude, determination and power!

Saoirse B – 5C

Niamh N-L – 6B

Ailish C – 5H

Parker T – 5CY

Running Club will return after February half term.

In the meantime, remain active and try a park
run! You can jog / walk these at your own pace
and they are free!

[home | parkrun UK](http://home.parkrun.uk)

Starting primary school

If you have a child born between
1 September 2021
and **31 August 2022**

You must apply for a school place by

15 January 2026

For full details, key dates and
to apply online, visit
www.hillingdon.gov.uk/schooladmissions
or email
admissions@hillingdon.gov.uk



HILLINGDON
LONDON

www.hillingdon.gov.uk/schooladmissions



DESIGN YOUR DREAM BIKE!

ART COMPETITION

☀️ **Let your imagination ride free!**
From wings, rockets, fairy dust, rainbow wheels
Anything goes!



HOW TO ENTER:

Draw Your Dream Bike!

Use pencils, pens, paint, or crayons.

No digital art or models.

Open to all pupils in years 1–9

📷 **Snap a photo or scan your drawing.**

✉️ **Email to: stars@hillingdon.gov.uk**

Subject: Dream Bike Comp

Include: Your name, age, and school.



EXTENDED CLOSE DATE:
FRIDAY 7TH NOVEMBER

WHY TAKE PART?

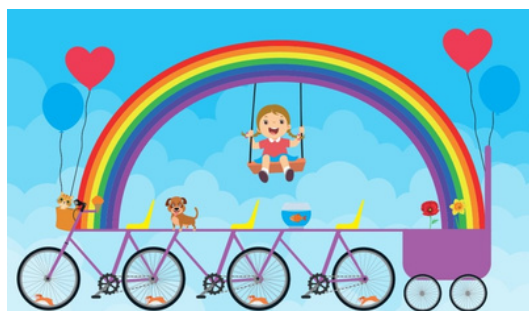
This competition is part of October Walk to School Month and Cycle to School Week – Helping children to travel actively, stay healthy, and be creative!

PRIZES

- 🎨 **Top 3 Winning designs turned into framed artwork**
- 🕒 **Fitness tracker watches!**
- 🎉 **Everybody receives a Certificate for Creativity!**

QUESTIONS?

Contact the STARS team at:
stars@hillingdon.gov.uk



Dream it. Draw it. Ride it!





RECEPTION & YEAR 3

DISCOS!

Thursday 23rd OCTOBER 2025

HESDIN HALL

Church of the Most Sacred Heart, Ruislip

RECEPTION: 4:30PM - 5:45PM

YEAR 3: 6:00PM - 7:15PM

**TICKETS
ON SALE!**

**BUY
NOW**



SHPTA
SACRED HEART PTA

SACRED HEART PTA

QUIZINGO NIGHT

Tease your brain
& win prizes!

Thursday
6th November

The White Bear, Ruislip
@ 7:30pm
Great raffle prizes
to be won!

£10

per person

Please text your team
name and number of
people in your team
to the PTA on
07810 890 679



To buy your ticket, please visit:
[https://www.pta-
events.co.uk/ptasacredheartruislip/index.
cfm?event=event&eventId=101805](https://www.pta-events.co.uk/ptasacredheartruislip/index.cfm?event=event&eventId=101805)