



Year 6 Curriculum Newsletter

Spring Term 2025

Dear Parents and Carers,

Happy new year and welcome to this term's curriculum newsletter. Here you will find details of the learning your children will be undertaking during this term, along with some other key information.

We are very proud of how well the year sixes settled into school last term and how hard they worked. They have shown resilience and a hard-working attitude.

Doors open at 8:35 and close at 8:45. We will start teaching promptly at 8:50. To avoid missing any learning, we would appreciate you help in ensuring the children are in school on time.

PE & Games

Children will take part in the Daily Mile and have PE lessons on the following days:

Tuesday – Outdoor PE with Mr Sands

Monday – PE with class teacher

PE kit needs to come into school with your child on a Monday and be taken home every week on a Friday. Please can all items have your child's name in it.

Indoor kit – black plimsolls, plain black shorts and house coloured t shirt/white t-shirt

Outdoor kit – plain black sweatshirt (or House colour), plain black tracksuit bottoms/leggings (shorts can be worn in the warmer weather) and trainers

We will be going outside for P.E all year. As the weather gets colder, please ensure your child has the correct kit.

Long hair should be tied back and earrings should be removed.

Year 6 Curriculum

Subject	Spring 1	Spring 2
Science	Evolution and Inheritance	Looking after the environment
History	-	Why should we study the Maya?
Geography	Why are rivers so important to villages, towns and cities?	
Art	-	What is Maya sculpture? Who is Freda Carlo?
DT	Mechanical systems: Structures: Playground shelters	-
RE	Why do Hindus want to be good?	What do Christians believe Jesus did to 'save' people?
PE	Gymnastics - indoor Flag Football - outdoor	Orienteering - outdoor Netball - outdoor
Computing	We are publishers	We are connected
Music	Rhythm	Pitch
French	Do you have a pet?	What is the date?
Life Learning	Growing up	My mental health

Maths

This term we are focusing on ratio, algebra, decimals and percentages, area, perimeter, volume and statistics. Where needed, we will be revising skills learnt last year.

The children all have a login for TT Rockstars to keep practising times tables facts and increase speed of recall. Please encourage your child to use this at home at least three times weekly. They will also have a weekly Sats Companion task.

English

This term in English, we will be writing a narrative based on the short film 'The Paperman'. We will also be writing newspaper reports based on traditional stories.

After half term, we will be studying 'The Journey' by Francesca Sanna – a book from another culture. Finally, we will be studying balanced arguments and writing our own. There is a weekly English task set on Sats Companion.



Science

Evolution and Adaptation

This half term, we will learning the key concepts of evolution and inheritance by building on prior learning of animal characteristics and fossils. We will learn about inherited traits and apply this knowledge to various animals and plants. We will learn about the work of Mary Anning and Charles Darwin. We will learn about the history of the human race and discover links between extinct animals and those which are still living today.

Looking after the environment:

Next half term, we will further develop our working scientifically skills exploring core concepts of the climate and how it changes. We will know the difference between man-made and natural environment as well as where different animals live.

History – Why should we study the Maya?

This term we will be learning about the Maya civilisation. We will identify the origins of the Maya using a range of sources, place their origins on a class timeline and make comparisons with British history. We will develop our understanding of the Maya writing system, discussing the advantages and disadvantages to it. We will research and present findings of the Maya calendar and compare it to the same period in British history. We will research the Maya number system and understand why they played ball sports. Finally, we will discuss the decline of the Maya, examining sources and artefacts.



Geography – Why are rivers so important to villages, towns and cities?

This half term, we are learning about rivers. We will be recapping the stages and looking at the role of rivers within this. We will identify the main rivers the world, linking to our knowledge of the seven continents. We will know the rivers throughout its journey to the sea and find out about erosion, depositic flooding. You could go on a family walk to a local river and look out for these features.

Art - What is Maya sculpture? Who was Freda Kahlo?

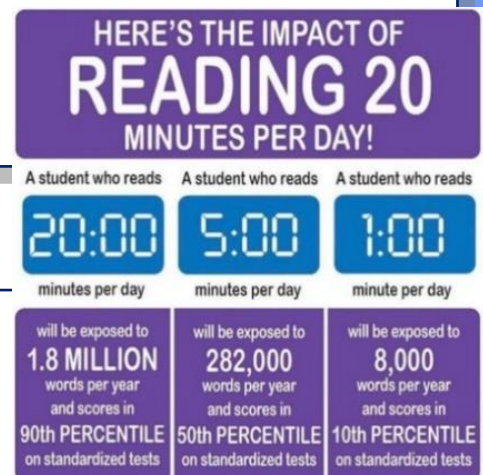
Next half term, we will be learning about Maya art including ceramics and sculpture. We will use clay and basic tools to create their own Maya stelae (monuments).

We will also be examining the artwork of Frida Kahlo as a significant female artist from Mexico.



DT – Structures: Playground Shelters

We will design, make and evaluate a playground shelter for a chosen season. We will use triangulation to add strength to the structures.



Home Learning

- Sats Companion task for maths and English set Fridays.
- TT Rockstars (at least 3 times weekly)
- Reading - We expect that the children read at least 4 times a week at home. The more your child reads the better. The children can write in their green books what they have read. Please can adults sign the book each week.
- Spelling Shed: minimum 5 games played weekly. Set each Wednesday.

Other dates:

- 26th February (5:30pm): SATs meeting for parents
- 6th March: World Book Day (more information nearer the time)
- 7th March: Jungle Book performance
- Parent Consultation meetings:
 - Tuesday 4th March
 - Thursday 6th March
- 10th April: Newbridge Year 7 welcome event

SATs

Week beginning 13th May 2025

Monday 12th May: Spelling, Punctuation and Grammar paper

Tuesday 13th May: Reading paper

Wednesday 14th May: Maths arithmetic paper 1, reasoning paper 2

Thursday 15th May: Maths reasoning paper 3

Friday 16th May: No tests

We will hold a meeting for parents later this term to give you more information about this week and how you can support your child at home.

Our relationship with you

Should you have any queries relating to your child, homework or school, please do not hesitate to contact us via the home contact book, school office or Weduc. We will take every opportunity to speak with you as soon as possible - Please note though that we will be unable to reply to any messages sent at the weekend until the Monday. Messages sent in the evening may not get seen until the next day. If it is important and you need to speak to us, please contact the office. Thank you for your continued support with your child's learning.

Mr Nash and Mrs North