



Welcome to Year 3

Staff

Class	Teacher
3W	Mrs Wootton Years 1, 2 and 3 Phase Leader
3F	Mrs Ford
3HW	Mrs Hutson/Mrs Walsh
Other Staff	Ms Glynn

Staff

Associate Staff

Mrs Sheehan

Miss Murru

Ms Rigby

Mrs Steel

Mrs Coburn

Staff

PPA Teachers

Mrs Connolly

Miss Murru

PSD Sports Training

Moving from the Infants to the Juniors.

- There are quite a few changes for the children (and parents!), but please don't worry, you will soon get used to them. If you have any questions, then you can email your teacher at year3@shpsruislip.org who will endeavour to reply to you as soon as possible. If your enquiry is urgent, please contact the school office.

Daily Organisation

- **Soft Start – Your child meets their teacher in the morning at 8:40 in the classroom. They hang their book bag on their peg. Once in the classroom, they put their pencil case and water bottle on their table and go and wash their hands. The register is then taken before prayer.**
- **Year 3 morning break is at 10.50 – 11.10am and there is currently an afternoon break for the first couple of weeks to settle the children in. Fruit is not provided, however you are welcome to send healthy snacks in with your child- (no grapes/nuts).**
- **Lunch begins at 12.15 pm. The children go straight to the dinner hall to eat. After they have finished their lunch they go outside to play in the junior playground. Lunch break ends at 1.15 pm.**
- **School ends at 3.15 pm. The children meet one of their adults at the front of reception/front of the school to be collected or at a designated meeting place. (Please sign the relevant form, which you can get from the office, if you wish for your child to leave by themselves).**
- **We are available for a ‘Drop in’ session on Tuesday’s- 3.15-3.30pm, if you would like to speak to your child’s teacher.**

Curriculum:

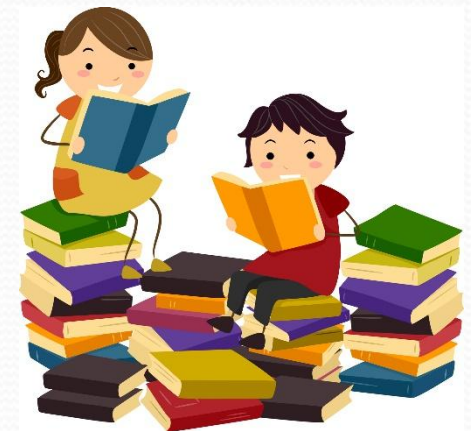
- We continue to follow the National Curriculum subjects: R.E., English, Maths, Science, Computing, History, Geography, Design Technology, Art, Music, Relationships and PSHE, Physical Education and French.
- Some of our History and Geography topics include Europe, Ancient Greece and the Stone Age.
- The children will be learning French as a new topic this year.
- R.E. – in addition to our R.E. Curriculum, we pray together every day with both children and teachers leading the prayer. We also have whole school collective worship on a Monday and phase assemblies on a Wednesday. We also have masses and liturgies throughout the year.
- We have Hymn practice on a Monday.

Homework

- **Homework for Year 3 will be given out on a Friday via Weduc to be returned by the following Thursday, unless specified.**
- **Homework could be based on English, Maths, R.E., or could be a Topic-based research. Please help your child to find appropriate books from the library or information sites on the internet.**
- **The children will receive spellings to investigate and learn each week, these will be tested the following Friday.**
- **We will also be sending out a year group weekly newsletter with key information and reminders via Weduc.**

Reading

- Please encourage your child to read **to you, or another adult**, daily. Children are expected to read at least five times a week.
- Your child will be given a Reading Record. Please sign this record on a daily basis, using the relevant page for that week. This will be checked weekly- (on the day that your child's class changes their books).
- The children need to bring their book bag, reading books and reading diaries to school **every** day.



Reading

- Reading books are changed every week and each class will have a set day. This is because in the Juniors the children change their own books.

3HW- Monday

3F- Wednesday

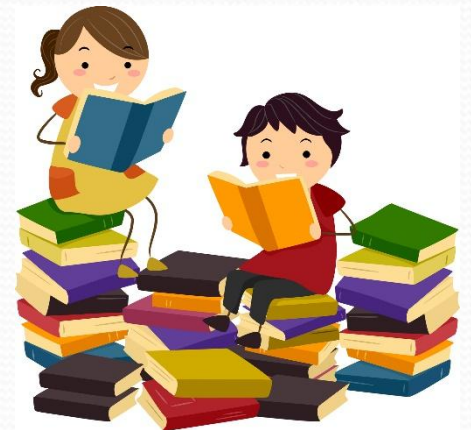
3W- Friday

- Library books will also be changed on a weekly basis.

3HW- Thursday

3F- Friday

3W- Tuesday



Maths

- Maths will be taught in base classes for the first half term, we will assess and review this and endeavour to put the children into sets by the end of the Autumn Term.

	Week 1	Week 2	Week 3	Week 4	Week 5	Week 6	Week 7	Week 8	Week 9	Week 10	Week 11	Week 12
Autumn term	Number Place value VIEW		Number Addition and subtraction VIEW				Number Multiplication and division A VIEW					
Spring term	Number Multiplication and division B VIEW		Measurement Length and perimeter VIEW		Number Fractions A VIEW		Measurement Mass and capacity VIEW					
Summer term	Number Fractions B VIEW		Measurement Money VIEW		Measurement Time VIEW		Geometry Shape VIEW		Statistics VIEW		Consolidation	



Music

- In Year 3, children will be learning how to play the recorder which can be purchased from Amazon. Please purchase ASAP. However, if you have any difficulties or problems purchasing them, please contact us.

We encourage the children to bring their recorder in with them every day. Please ensure their name is on their recorder because they all look the same and can get muddled up quite easily!



P.E.

- **3HW- Monday and Thursday .**
- **3F- Tuesday and Thursday.**
- **3W- Tuesday and Friday.**

- These will change on a termly basis.



Assessment at Sacred Heart

- **We assess your children in line with the 2014 National Curriculum.**
- **Our assessment system is based on the key skills children acquire and develop in each subject.**
- **These key skills are developed throughout Year 1 – Year 6.**

Assessment at Sacred Heart

- We will communicate regularly with regards to your child's progress throughout the year. We will have a formal meeting twice a year (Autumn & Spring) and then a written report at the end of the year (Summer).
- **We will also be letting you know whether your child is at age related expectations or whether they are above or below age related expectations.**

Practical Details

- **Uniform – Please make sure that all items are named and are in line with the current Uniform Policy.**
- **Please Ensure that PE kits are in line with the current Uniform Policy**
- **Trainers (black or white only) should only be worn on P.E. days.**
- **Please remember that children should not be wearing earrings to school.**
- **Your child will need to bring in a small, named pencil case that can fit into their trays. It should be kept in school since it will be needed every day.**
- **Please make sure your child's pencil case is well equipped with at least two pencils, a glue stick, a sharpener, rubber, ruler, colouring pencils and felt tip pens (optional).**
- **Children are to bring a named book bag to school or a small rucksack.**
- **Please send your child to school with a labelled water bottle every day.**

Working Together



- Weekly Weduc newsletter.
- The year group email for communication with the teacher is a key communication tool but it is important we use it as effectively as possible.
- Email correspondence should only be used to answer important factual questions or to arrange a face to face meeting.
- Emails will not be answered immediately, as teachers are in class and planning and preparing lessons before and after school. Teachers will respond at the earliest opportunity (not including weekends or holidays).
- All emails are checked by the Phase leader/Senior leadership team.
- If you have an urgent concern or complaint then you should email the office. All absences should be recorded via the Weduc app, not by e-mail.



Thank you

Thank you for taking the time to meet us, we look forward to a wonderful year with your children 😊