



SHERDLEY PRIMARY SCHOOL

NEWSLETTER



A note from Mr Gawne ...

Where has the year gone? Once again, this term seems to have flown by, filled with so many moments to celebrate. The children have made pleasing progress across the term, sharing new knowledge, enjoying new experiences, and filling our school with fun and laughter. It has been a joy to see their enthusiasm and commitment to learning shine through across school.

Over the past two years, writing has been a key priority for us here at Sherdley, and it has been wonderful to see the fruits of that focus. Right up until last week, children across the school were proudly sharing their writing with me, and I have been genuinely impressed by the quality of their work. Year 2's imaginative pieces inspired by Bob the Man on the Moon were a delight to read, while Year 6's creative and descriptive writing linked to Oscar Wilde's *The Selfish Giant* showed real flair and maturity. We certainly have some budding young authors in our midst—keep up the fantastic work!

The last three weeks have seen Sherdley in full festive mode, and I must congratulate all of our children and staff for the wonderful performances they have put on. These events take a great deal of preparation behind the scenes, and I am so grateful to our staff for their dedication and to the children for their talent and enthusiasm. They should be very proud of themselves. A heartfelt thank you also goes to you, our families, for your support in helping us stage these performances and for joining us to celebrate the children's achievements.

CONTINUED...

Sherdley's Whole School Attendance Target for this Academic Year:

96%

Sherdley's Whole School Attendance since returning in September:

94.4%

ATTENDANCE HERO
Here, Every day, Ready,
On time

Family

A note from Mr Gawne ... Continued

This December also saw Sherdley's first-ever Santa Dash, which was a huge success. It was fantastic to see children across the school getting active together for such a worthy cause. And to mark the end of term, we had a very special surprise this morning—a visit from 2 reindeers; Comet and Blitzen to greet our children and families as part of our 'Sherdley Christmas'. What a magical way to finish the term!

A big thank you to all for your support with our Christmas Raffle which raised an amazing £394.90 .

Before we embark upon the Spring term, I must once again ask for your support in ensuring that children are coming to school wearing the correct uniform, particularly on PE days. Brightly coloured hoodies and clothing with large branded logos are not part of our policy. In addition, we have seen an increasing number of issues arising from children's use of WhatsApp and Snapchat. As a reminder, the minimum age for both of these apps is 13 years old, and unfortunately, problems from home are increasingly spilling into school time. While we will always support where we can, our capacity to deal with such matters outside of school is limited. We respectfully encourage parents and carers to check their children's phones and consider whether, at their age, they really need access to these platforms.

This week, you will have received an overview report of the term detailing some of the progress your child has made, including their efforts in class. Our formal parents' evening will take place on Wednesday 14th January from 2:00pm, and booking information has been shared with you on the app. This will give you a chance to discuss these in more detail. You should also have received an overview of Spring Term Events so far, to allow you to add these dates to your calendars.

Finally, I would like to share that after the Christmas Break, Mrs Johnson will be joining us as the full time, permanent teacher in our Pre-School having worked with us since September on a part-time basis. I would like to formally thank Mrs Parsonage for her commitment to Sherdley and our youngest children and hope that she remains a friendly face in the future.

All that remains is for me to wish all of our families, friends, and the wider Sherdley Family a very Merry Christmas and a Happy New Year. On behalf of myself, the staff, and our governors, thank you sincerely for your continued support throughout this term. We look forward to welcoming you all back on Tuesday 6th January.

Best wishes always,
Mr Gawne & All At Sherdley

SCHOOL REOPENS

TUESDAY 6TH JANUARY



Christmas at Sherdley



Sherdley Santa Dash!



Spotlight on School Council

The School Council have been busy making Christmas cards for our neighbours, wishing them a very Merry Christmas from the Sherdley Family.

On Tuesday, Mrs Bennett, Mrs Eccleston and the Council delivered the cards to Thames Road, New Street and Severn Close. Some neighbours popped out to thank us. They were really appreciative.





Spotlight on School Council



Attendance at Sherdley

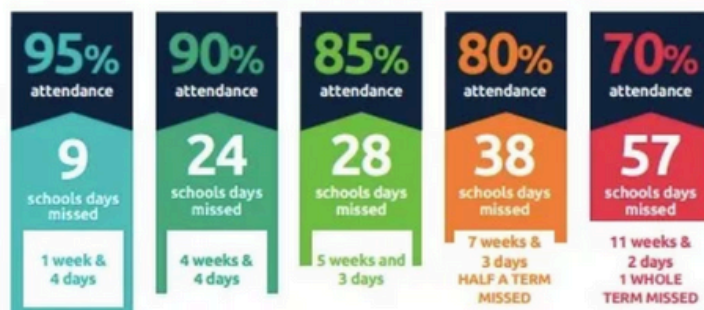
You may have heard in the news recently, that all schools are being led and supported by the Department for Education to improve their overall attendance.

The Dfe have identified that Attendance on a Friday is a concern at Sherdley.

Throughout Spring and Summer, we will be carrying out home visits to children who are absent on Fridays. This will be random visits and will include those who have informed us of the child's absence.

If you would like to discuss this, please reach out to Mrs Eccleston or any member of SLT.

Every day in school counts...



and every minute counts...





Events at Sherdley



Spring Term Events



| | |
|-----------------------------------------------------------------|------------------------------------|
| School opens for Spring Term | Tuesday 6 th January |
| EYFS Open Evening for September 2026 starters 3:30 to 4:30pm | Monday 12 th January |
| Parents Evening 2 to 6:30pm | Wednesday 14 th January |
| 1S Class Assembly – 2:40pm | Monday 19 th January |
| 5J Class Assembly – 2:40pm | Monday 26 th January |
| 6C Class Assembly – 2:40pm | Monday 2 nd February |
| 1W Class Assembly | Monday 9 th February |
| School closes for half term | Friday 13 th February |
| School opens | Monday 23 rd February |
| Year 4 MTC Parent meeting – time tbc | Tuesday 24 th February |
| Year 6 Parent SATs Meeting – time tbc | Thursday 26 th February |
| World Book Day | Thursday 5 th March |
| 4O Class Assembly – 2:40pm | Monday 9 th March |
| 3H Class Assembly – 2:40pm | Monday 16 th March |
| RR Class Assembly – 2:40pm | Monday 23 rd March |
| World Maths Day | Wednesday 25 th March |
| School closes for Spring Break – 1:30pm | Friday 27 th March |





Next Year's Term Dates - 26-27



Term Dates for September 2026– July 2027

Autumn Term:

Open on the morning of
Close on the afternoon of

Wednesday 2nd September 2026
Friday 23rd October 2026

Open on the morning of
Close on the afternoon of

Monday 2nd November 2026
Friday 18th December 2026

Spring Term:

Open on the morning of
Close on the afternoon of

Tuesday 5th January 2027
Friday 12th February 2027

Open on the morning of
Close on the afternoon of

Monday 22nd February 2027
Thursday 25th March 2027

Summer Term:

Open on the morning of
Close on the afternoon of

Monday 12th April 2027
Friday 28th May 2027

Open on the morning of
Close on the afternoon of

Monday 7th June 2027
Friday 16th July 2027

Easter Bank Holiday:

Good Friday: 26th March 2027
Easter Monday: 29th March 2027

Bank Holiday During Term Time:

May Day: Monday 3rd May 2027

Inset Days:

Tuesday 1st September 2026
Monday 4th January 2027
Monday 19th July 2027
Tuesday 20th July 2027
Wednesday 21st July 2027

Start Something New This January!

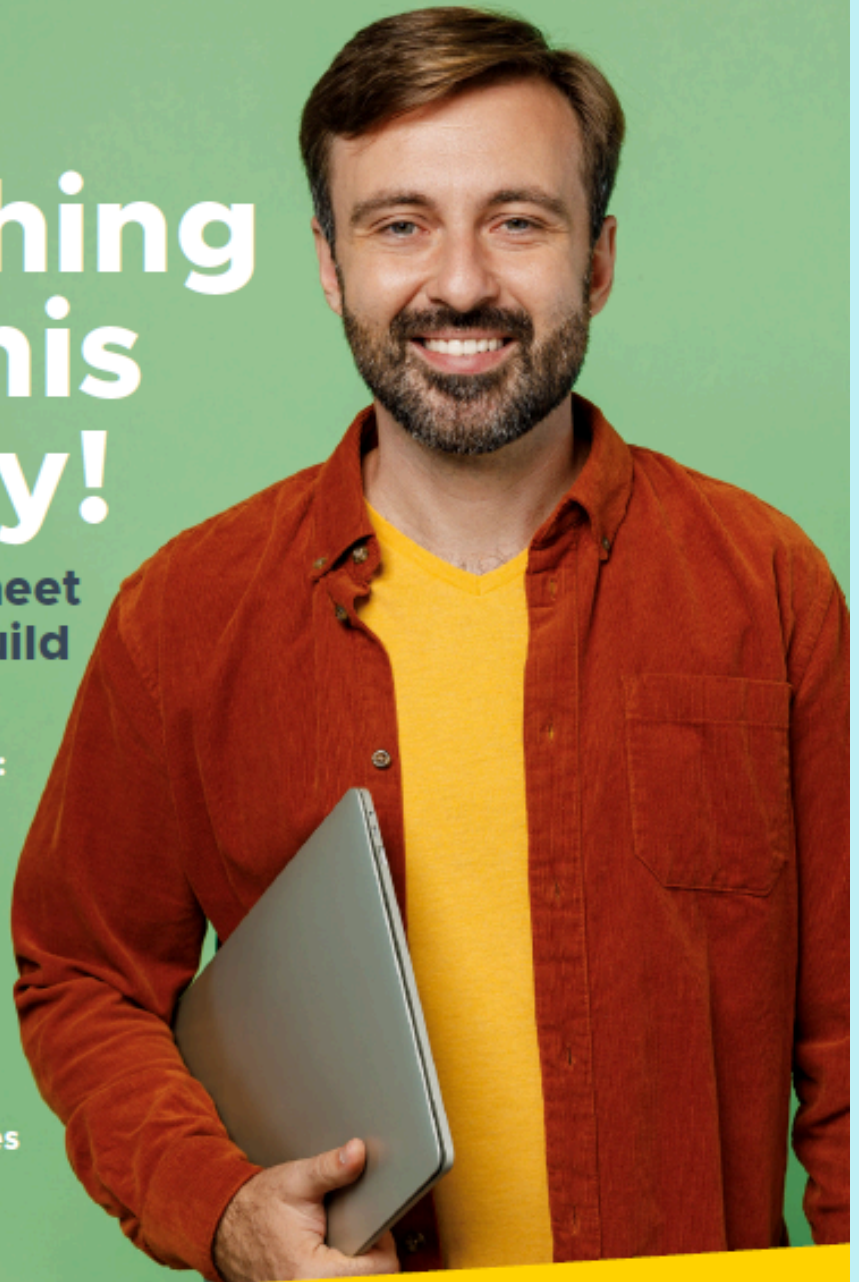
Learn new skills, meet
new people and build
your confidence.

Come along to find out more:
Wednesday 7 January
9.30am - 12noon
Park Road Centre WA9 1HE

Free courses include:

- Wellbeing
- Digital Skills
- Childcare and Education
- English, Maths & ESOL

Participants in all ACL courses
must be aged 19+ and live in
the Liverpool City Region.



Contact us:



01744 676671, 01744 677328, or 07702 959814



adultlearning@sthelens.gov.uk



www.sthelens.gov.uk/adultlearning



StHelensACL

Lifelong learning for all!

STAYING SAFE ONLINE

Roblox Announces Facial Age Checks for Chat Features

Roblox's Big Safety Update: What Parents Need to Know: Roblox is rolling out new safety features this December and January to make its platform safer for kids.

Here's the key info:

Age-Verified Chat

- **Chat access will soon require a quick facial age check.**
- **Kids will be grouped by age, and cross-group chatting will be restricted.**
- **For under-9s, chat will now be off by default unless parents turn it on.**

Privacy First

- **Photos for age checks are used only for verification and deleted immediately.**
- **Roblox promises strong safeguards to protect children's data.**

Why This Matters

These changes aim to reduce inappropriate contact and create safer spaces for young players. If successful, they could set a new standard for online safety across platforms.

Online Safety - continued ...

 **Watch for Updates: Features start rolling out in December and January. We'll keep you posted on how this impacts your child's experience.**

Parent Tip: How to Stay Involved

Check Settings: Log into your child's Roblox account and review chat settings. For under-9s, chat is off by default unless you enable it.

Talk About Online Safety: Remind your child never to share personal details and to tell you if something feels uncomfortable.

Stay Updated: Keep an eye on Roblox's announcements and school newsletters for any changes.

Reporting Issues

If you have concerns about your child's safety or encounter inappropriate content:

- **Use Roblox's Report Feature: In-game, click the Menu → Report Abuse option.**
- **Block and Report Users: You can block players and report their behavior directly from their profile.**
- **Contact Roblox Support: Visit Roblox Support for help with account or safety issues.**

You can read the article here:

<https://swgfl.org.uk/magazine/roblox-announces-facial-age-checks-for-chat-features/>

SAFEGUARDING AT SHERDLEY



Designated Safeguarding Leads



MRS BENNETT



MRS ECCLESTON

Deputy Designated Safeguarding Leads



MR GAWNE



MRS STROUD



MR DAVIES

Contact us: sherdley@sthelens.org.uk
01744 678683

DSLs and Deputy DSLs are outside, around school most mornings. If you have any worries or concerns, please speak to one of us. We can also be contacted via the Sherdley email - sherdley@sthelens.org.uk or the Parent App. If you would rather not share information with the office team, you can request a call back regarding a safeguarding worry.

Term Dates 2025 – 2026



Term Dates for September 2025– July 2026

Autumn Term:

Open on the morning of Tuesday 2nd September 2025
Close on the afternoon of Friday 24th October 2025

Open on the morning of Tuesday 4th November 2025
Close on the afternoon of Friday 19th December 2025

Spring Term:

Open on the morning of Tuesday 6th January 2026
Close on the afternoon of Friday 13th February 2026

Open on the morning of Monday 23rd February 2026
Close on the afternoon of Friday 27th March 2026

Summer Term:

Open on the morning of Monday 13th April 2026
Close on the afternoon of Thursday 21st May 2026

Open on the morning of Monday 1st June 2026
Close on the afternoon of Friday 17th July 2026

Easter Bank Holiday:

Good Friday: 3rd April 2026

Easter Monday: 6th April 2026

Bank Holiday During Term Time:

May Day: Monday 4th May 2026

Inset Days:

Monday 1st September 2025

Monday 3rd November 2025

Monday 5th January 2026

Friday 22nd May 2026

Monday 20th July 2026

Advanced Solutions

St Helens

Spring Term 2026

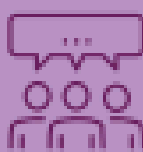
ADDvanced Solutions
Community Network
Supporting you to feel the answer

ADDvanced Solutions Community Network

supports the emotional health and wellbeing of neurodivergent children and young people, their families and the professionals that work with them. **No diagnosis or referral is needed to access the offer.**

ST HELENS Community Network Group

Tuesday afternoons during term time



Join us from **12:30pm-2:30pm**

New Venue: Willowbrook Hospice, The Living Well, Borough Rd, St Helens WA10 3RN

No booking needed, just come along

Come along and meet our team, to learn more about neurodiversity from those who can share lived experiences and practical strategies. Our groups create a welcoming, accepting and relaxed environment for parents and carers, you are not on your own.

[New Venue - Get directions](#)



The Living Well is located on Borough Road, reachable via the 10 bus routes from St Helens town centre.

Topics this term:

| | |
|--------------------------------|-------------------------------------------------------------------------|
| Tues 6 th January | Open Session seek advice around any challenges you are facing |
| Tues 13 th January | Sensory Processing Difficulties |
| Tues 20 th January | Home-Start Parent Support |
| Tues 27 th January | Improving Sleep for neurodiverse families |
| Tues 3 rd February | Autism, ADHD and Masking |
| Tues 10 th February | Supporting Siblings of neurodivergent children |

Half Term Break

| | |
|--------------------------------|----------------------------------------------------------------------|
| Tues 24 th February | Managing Stress as parents and carers |
| Tues 3 rd March | Supporting Situational Mutism |
| Tues 10 th March | SEND Support |
| Tues 17 th March | Welfare and Benefits Advice <i>from Signs of a Rainbow</i> |
| Tues 24 th March | Sensory Processing Difficulties |

Sherdley Shares

Empowering you to manage your family's health and wellbeing

A free app providing local NHS-approved support and information to expectant mums, parents and carers of children aged 0-5

catchapp.co.uk
@catchapp_uk
search for catch app

Family Hub

0-19+ Service Launches Instagram

0-19+ Service Instagram page



The [0-19+ Service St Helens](#) Instagram page is packed full of service information, updates and news. The page is aimed at parents and carers and shares public health messages and promotes the service offer across the borough. The team has also produced video content to help service users feel at ease when accessing clinics.

Sherdley Shares

Neurodevelopment pathway drop ins



Mersey Care
NHS Foundation Trust

Come along to one of our drop in sessions in St Helens.

Our team will answer questions you have about the neurodevelopment pathway process.

You don't need to be using our service, you can drop in if you have any questions to ask about this.

We look forward to meeting you.

Tuesdays at Parr Children's Centre and Central Link Family Hub
See details and times below

12 August at Parr Children's Centre, 9am to 12 noon.

23 September at Central Link Family Hub, 1pm to 4pm.

25 November at Central Link Family Hub, 1pm to 4pm.

26 August at Central Link Family Hub, 1pm to 4pm.

7 October at Parr Children's Centre, 9am to 12 noon.

9 December at Parr Children's Centre, 9am to 12 noon.

9 September at Parr Children's Centre, 9am to 12 noon.

18 November at Parr Children's Centre, 9am to 12 noon.

16 December at Central Link Family Hub, 1pm to 4pm.

We work with children and young people with complex neurodevelopmental difficulties, who need an assessment to gain a better understanding of their needs.

Sutton Family Hub, Ellamsbridge Road, Sutton, St Helens, WA9 3PY

Central Link Family Hub, Westfield Street, (off Peter Street), St Helens, WA10 1QF

If you need more information you can contact us on 01744 415 608 or email: mcn-tr.sthelensneuropathway@nhs.net



Sherdley Shares



St Helens Family Hub & Children's Centres

Our Family Hub offer:

- Early education
- Family friendly support and advice on pregnancy, child development and family health
- A seasonal timetable of activities for children
- Parenting programmes
- Speech and language support
- Volunteering Opportunities
- Help with access to employment - support with work or training
- Half term holiday activities and food programme

SUTTON FAMILY HUB

Ellamsbridge Road
Sutton
St Helens
WA9 3PY

Telephone: 01744 671788
Email: childrenscentres@sthelens.gov.uk
Opening hours: 9:00am - 5:00pm



Sherdley Shares

SOCIAL CARE

- Tell us about a child being abused or neglected
- Get help, support or social care
- Children's services
- Contact Cares

- Adult Social Care Strategy
- Protecting vulnerable adults
- Emergency Duty Team
- Care homes
- Adults with additional needs
- Occupational therapy
- Supported Living
- Living independently at home
- Help with visual problems
- Pause
- Mental health support
- Adult Social Care Market Position Statement

CHILDREN'S SERVICES

- Concerned about a child's safety or welfare?
- Adoption, fostering and special guardianship
- Care leavers
- Family Hubs
- Why join St Helens Children's Social Care?
- St Helens Children We Look After Council
- Commissioning services for children's social care
- Disabled children and young person's register
- Oral health for ages 0-19



Sherdley Shares

FOOTBALL CLASSES

First class FREE to try

All sessions are based around fun, with matches being played. Even if you are in a team why not come along for extra training. My sessions are designed to build confidence, learn new skills and make new friends.

I am DBS approved and an FA qualified coach. I have over 16 years experience in coaching both in the UK and overseas.

CLASSES AVAILABLE

Tuesday 5-6pm

Boys Years 2-4

Wednesday 5-6pm

Boys Year 5-7

Wednesday 6-7pm

Girls Year 3-4

Thursday 5-6pm

Mixed Year 1-3

Thursday 6-7pm

Mixed Years 6-8

Friday 5-6pm

Mixed Reception/Year 1

Friday 6-7pm

Mixed Years 7-10

Saturday 9.45- 10.30am

Mixed age 3-4

Sunday 11am-12pm

Mixed Year 4-6



**DE LA SALLE SCHOOL
WA10 4QH**

**COWLEY HIGH SCHOOL
WA10 6PN**

**PETER STREET COMMUNITY
CENTRE WA10 2EQ**

For more information on prices
and availability contact
Steven Pagendam



07492091999



Steven Pagendam

Water, shin pads & trainers
essential.

Sherdley Shares

Computer Xplorers
ST HELENS
****HAF EXCLUSIVE**
MINECRAFT SOCIAL
HOLIDAY SESSIONS

St Helen's Library
World of Glass, Chalon Way, WA10 1BX
23rd & 29th Dec
10.30am-2.30pm

Newton Le Willows Library
Crow Lane E, WA12 9TX
22nd & 28th Dec
10.30am-2.30pm

FREE PLACES*

Department for Education
ST HELENS BOROUGH COUNCIL

*Funded places available to those eligible for and receiving benefits-related free school meals (FSM), and their families. Children who are in receipt of a support plan via Early Help, Child in Need or Children We Look After, EHCP, or if your child receives additional hours at school.

BOOK! Visit the link or scan the code-
computerexplorers.co.uk/bolton-wigan/book
Questions? Email us bolton@computerexplorers.co.uk

@CompXBolton

Computer Xplorers
ST HELENS
CHRISTMAS
TECH CLUBS

Crazy about computers?
Love gaming?
Mad about Minecraft?
Join us for Festive Fun at our engaging, educational Tech Club!

Rainford High School
Higher Lane, Rainford, WA11 8NY
22nd-23rd December 2025
11am-3pm

FREE PLACES*

Department for Education
ST HELENS BOROUGH COUNCIL

*Funded places available to those eligible for and receiving benefits-related free school meals (FSM), and their families. Children who are in receipt of a support plan via Early Help, Child in Need or Children We Look After, EHCP, or if your child receives additional hours at school.

BOOK! Visit the link or scan the code-
computerexplorers.co.uk/bolton-wigan/book
Questions? Email us bolton@computerexplorers.co.uk

@CompXBolton

Sherdley Shares

Healthy Families: Growing Up



Healthy, thriving children and families



HENRY's free **Healthy Families: Growing Up** programme is for parents and carers of primary-school age children - it will help you develop a healthier, happier lifestyle that the whole family can enjoy.

The programme covers these 5 themes across **8 sessions** and provides everything you need to help your children flourish.

- Feeling more confident as a parent
- Physical activity for the whole family
- What children and the whole family eats
- Family lifestyle habits
- Enjoying life as a family

Get in touch to sign up now!



"This was the best thing I could possibly have done to help me be a better mum"



Programme details

Friday 9th January - Friday 27th February 2026
12:30-2:30pm
Parr Childrens Centre, Ashtons Green Drive, WA9 2AP
Scan the QR code above to sign up or for more information

Contact Us

Phone: 01744 371111
Email: chcp.sthelens@nhs.net
Website: www.sthelenswellbeing.org.uk

Sherdley Shares



FREE HOLIDAY CLUB SPACES & FREE FOOD!

Eaves Primary, St. Helens, WA93UB

Football, dance games, activities, and more!

Book now by searching for us on Eventbrite...

