



SHERDLEY PRIMARY SCHOOL

# NEWSLETTER



## A note from Mr Gawne ...

It's hard to believe we've reached the end of the first half term already—eight weeks have flown by and it's been great to see the learning and progress our children have been making since starting back in September. I have been really impressed with some Maths in year 2 that has been shared with me this week alongside some fantastic writing from our children in year 6 linked to their learning on WWI and their English text of 'War Horse' by Michael Morpurgo. A great story and one of my favourites from my time as a class teacher too! The winter germs have also started to creep in alongside the darker nights but we thank you for your support in continuing to ensure that attendance remains a priority for school. Let's try and climb back above 96% in Autumn 2!

Over the last couple of weeks, it's been a real pleasure to welcome new families to Sherdley, especially our youngest members in Reception and Pre-School who have settled in beautifully and are already making wonderful contributions to our school community.

There have been so many highlights this half term that it's difficult to choose just a few! We were proud to introduce our Year 6 Prefects and House Captains for the academic year—each one chosen for their leadership, kindness, and commitment to our school values. We know they'll be fantastic ambassadors for Sherdley.

CONTINUED...

**Sherdley's Whole  
School Attendance  
Target for this  
Academic Year:**

**96%**

**Sherdley's Whole  
School Attendance  
since returning in  
September:**

**95.4 %**

ATTENDANCE HERO  
**Here, Every day, Ready,  
On time**

Family

## A note from Mr Gawne ... Continued

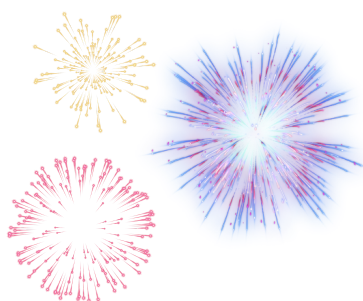
We also hosted our open evenings for prospective families joining us in 2026–27, welcoming over 40 families into school to see what makes Sherdley so special. Lower Key Stage 2 enjoyed an immersive Stone Age Day, which was a brilliant launch into their history topic, and today's Rock Kidz Day brought music, movement, and motivation to every corner of the school. It was my first Rock Kidz experience as Headteacher—and what a day it was! The energy and excitement were absolutely infectious. The costumes were fantastic too and I thank you for your support with this!

Looking ahead, our Autumn Term events calendar has been updated and shared with families, including some new dates for your diaries. Year 1 are eagerly anticipating their trip to the Eureka Science Museum, and we're delighted to confirm the Year 6 residential for the summer term. Over recent weeks, you may have received updates regarding baseline assessments for statutory checks such as the Year 4 multiplication check and Year 6 SATs scaled scores too. Thank you for your continued support in engaging with these, and for attending the Year 1 Phonics Workshop—it's always lovely to see so many of you involved in your children's learning journey. After half term, we look forward to welcoming you into school for our informal 'Drop In' Parents' Evening on Wednesday 12th November straight after school until 5:00pm, where you'll have the opportunity to visit your child's classroom and browse their books ahead of our formal Parents' Evening on Wednesday 14th January 2026.

### **A Few Reminders:**

As we approach the end of the term, we've noticed a few slips in uniform standards. Please remember that children are expected to wear full school uniform, including black shoes, and that any accessories should be in our school colours—blue, white, black, or grey. On PE days, children may wear their PE kit, but again, this should reflect our school colours. Jewellery is not permitted, except for stud earrings. We also want to thank parents for their cooperation in keeping our school grounds safe by not bringing dogs onto the premises, and for parking considerately during morning drop-off and afternoon pick-up. Your efforts make a big difference, especially after a few concerns were raised by fellow parents.

Thank you once again for your continued support. Wishing you all a happy, healthy, and restful half term break. We look forward to welcoming the children back on **Tuesday 4th November**.



## School Admission & Applications Reminders

It's that time of year where families begin to choose Primary and Secondary Schools for their children and the St Helens School Admissions Team have asked us to remind you of the following dates:

### **31st October 2025 –**

Closing date for parents of Y6 children to select High School Choices.

## School admissions



### **15th January 2025 –**

Closing date for families of Reception aged children to select Primary School places for September 2026.

**Reception spaces still available at Sherdley for this year!**

Growing Together

**Reception Spaces Available Now!**

Call Us: 01744 678 683

Visit Our Website: [www.sherdleyprimary.co.uk](http://www.sherdleyprimary.co.uk)



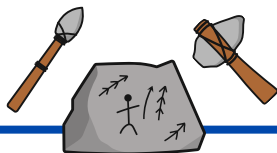
## Sherdley School Prefects

Each year, we encourage our year 6 children to apply to be a Sherdley prefect. It is a challenging process. This year over 22 children applied for 12 positions. They were given a job description, completed an application form, had a mini 'interview' as well as having their attendance, punctuality, uniform and track-it-lights considered - we want positive role models as our prefect team!

We are delighted to share that the following children are this year's prefects - you will recognise them due to the green ties they will wear. (We have a small number of prefects yet to be assigned. We look forward to the next round of applications in January 2026.)

The first group of children to be successful are: Walter, Josh W, Ted, Flo, Ivy, Kalina, Ellie and Chris.





## Spotlight on year 3 - Stone Age Day



During Autumn 1, year 3 have been learning about the Stone Age. They learned about the Stone Age to the Iron Age, including how did the lives of Ancient Britons change during the Stone Age? They have been reading: Ice Monster by David Walliams, writing instructions on how to Wash a Woolly Mammoth and reading Stone Age Boy. They have also completed artwork that reflects this period of time.

During Stone Age Day, the children made clay pots, learned about living during the period and ate some soup.

We made soup like during the stone age - it was 10/10 - Olivia

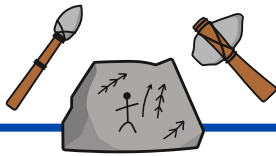
We made Stonehenge using custard cream biscuits - Phoenix

And at the end we got to eat them! - Izzy.



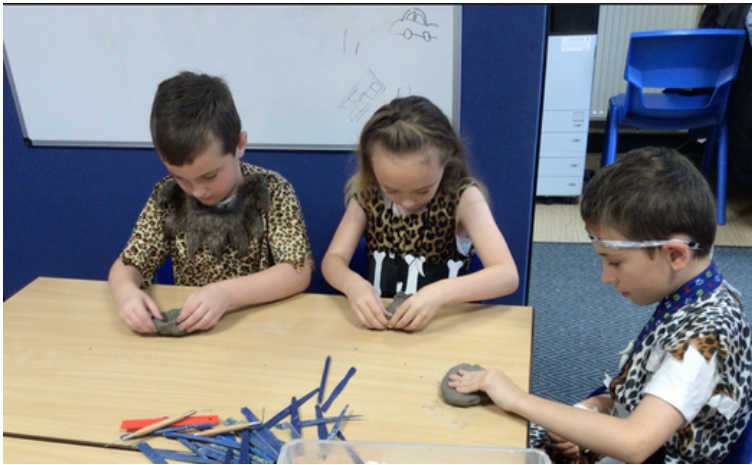
STONE  
AGE





## Spotlight on year 3 - Stone Age Day

We made clay pots because they couldn't go to the shop.  
Jo

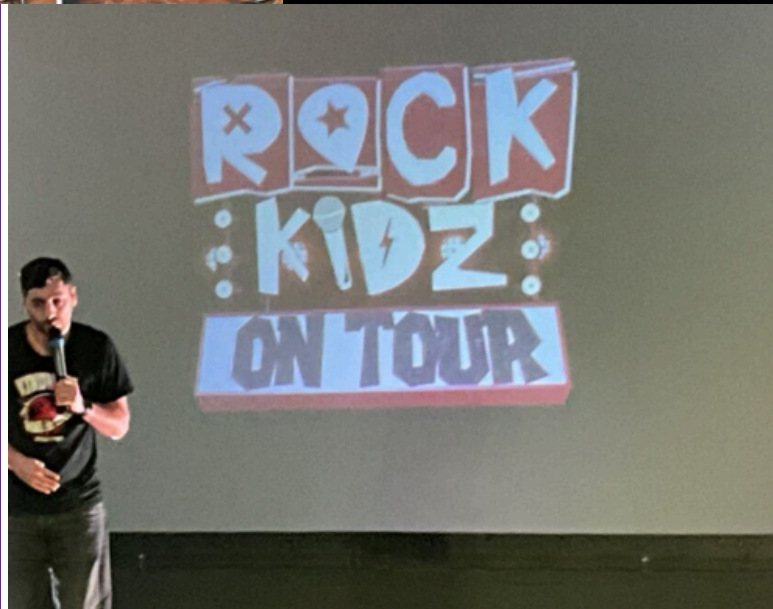
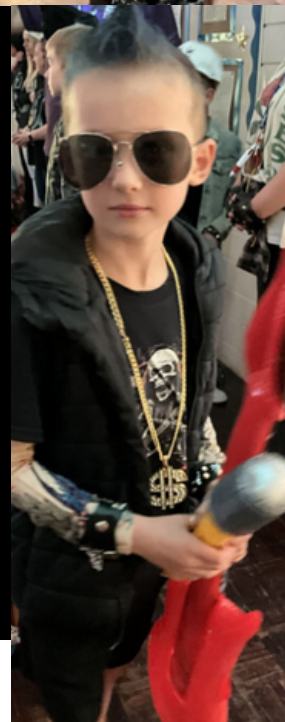


We played games like stone age children. We hid 100 conkers then looked to find them - Sadie



STONE  
AGE







## Sherdley Shares



### Autumn Term Events



School closes for half term	Friday 24 <sup>th</sup> October
School opens	Tuesday 4 <sup>th</sup> November
Odd Socks Day (Anti Bullying Week Begins)	Monday 10 <sup>th</sup> November
6M Class Assembly- 2:35pm	Monday 10 <sup>th</sup> November
Parents' Evening Drop In – 3:15pm – 5:00pm	Wednesday 12 <sup>th</sup> November
Children in Need Day In School	Friday 21 <sup>st</sup> November
School Photographer – Individual Photos (All children in School Uniform)	Tuesday 25 <sup>th</sup> November
4M Class Assembly – 2:35pm	Monday 1 <sup>st</sup> December
Santa Dash – Whole School	Friday 5 <sup>th</sup> December
LKS2 Christmas Carol Concert for Year 3 parents (Afternoon performance - times TBC)	Monday 8 <sup>th</sup> December
LKS2 Christmas Carol Concert for Year 4 parents (Morning performance - times TBC)	Tuesday 9 <sup>th</sup> December
KS1 Nativity – 2pm	Tuesday 9 <sup>th</sup> December
KS1 Nativity – 9:30am	Wednesday 10 <sup>th</sup> December
UKS2 Christmas Concert for Year 5 parents – 2:15pm	Wednesday 10 <sup>th</sup> December

Festive Jumper & Dinner Day	Thursday 11 <sup>th</sup> December
EYFS Nativity – 2pm	Thursday 11 <sup>th</sup> December
EYFS Nativity – 9:15am	Friday 12 <sup>th</sup> December
Rocksteady Christmas Concert – 10:00am for families	Friday 12 <sup>th</sup> December
UKS2 Carol Concert for Year 6 parents – 2:15pm	Friday 12 <sup>th</sup> December
EYFS Christmas Party	Tuesday 16 <sup>th</sup> December
UKS2 Christmas Party	Tuesday 16 <sup>th</sup> December
KS1 Christmas Party	Wednesday 17 <sup>th</sup> December
LKS2 Christmas Party	Wednesday 17 <sup>th</sup> December
School closes for Christmas Holidays – 1:30pm	Friday 19 <sup>th</sup> December



## Aspirations Week 26<sup>th</sup> January 2026

# CAN YOU HELP?

Email Mrs Bennett –  
[sherdley@sthelens.org.uk](mailto:sherdley@sthelens.org.uk)

Sherdley Aspirations Week 26.01.26

### WHAT WE NEED

- A wide range of adults to come into school and share their experience of work
- This could be with a class of children or as part of our Career Carousel
- ALL jobs are welcome: trades people, office workers, creative jobs, emergency services, EVERYTHING IS WELCOME, THE MORE

### BENEFITS:

- Gives children the bigger life picture.
- Children with aspirations often have improved Mental Health.
- It is important to broaden children's minds to jobs they may not be aware of.
-

# Are You A Young Carer?

*Young Carers look after a family member or friend with an illness, disability or substance misuse*

St.Helens Young Carers Service provides:



- Information & Advice
- Trips Out & Residential Breaks
- Activity Sessions at their Centre
- Training & Skill Workshops
- Emotional Support

And much more!



In this School, you can speak to your Young Carer Champion who is here to support you and put you in touch with the Young Carer Service.

Speak to...

Mrs Bennett or  
Mrs Eccleston

Or you can contact St Helens Young Carers:

Tel: 01744 67 72 79

Email: [info@sthelenscarers.org.uk](mailto:info@sthelenscarers.org.uk)



## ARE YOU A YOUNG CARER?



- Are you between the age of 6- 18?
- Do you help to look after someone at home?
- The person you look after could be ill, elderly, have a learning or physical disability, substance or alcohol misuse or a mental health condition

If you are a **Young Carer** we can offer:

One to one  
support

Activities and  
Residential

Information and  
advocacy

Support to  
manage your  
caring role

Tailored  
Workshops

Career and job  
opportunities

You can make a self-referral  
on our website



[www.sthelensyoungcarers.org](http://www.sthelensyoungcarers.org)

**CARERS  
TRUST**



If you would like more information  
please contact: St Helens Young Carers  
1st Floor, Fishwick House, Corham Street  
St Helens, WA10 1SL

01744 677279

St Helens Carers Centre  
sthyc

## Mental Health Monday

On 10<sup>th</sup> October, we all added a splash of yellow to our uniform in support of Mental Health Awareness. This year we asked for a small donation, which would support our school counselling service.

Thank you for your donations.

You helped us to raise £443.35 which will support us in continuing our counselling offer as part of our wider school pastoral support.



Thank you!



Mrs Bennett  
DSL  
Deputy Head



Mrs Eccleston  
DSL  
Attendance



Mrs Stroud  
Deputy DSL  
SENDCO



Mrs Bridge  
The Hub  
Pastoral



## Anti-Bullying Week – 10<sup>th</sup> November



Monday 10<sup>th</sup> November

Wear Odd Socks  
with your uniform

What is Odd Socks Day?

### Purpose:

It is an annual national event that marks the start of Anti-Bullying Week, promoting the message of acceptance and celebrating individuality.



### Message:

The day encourages people to be proud of their uniqueness, as everyone is different, and these differences make the world exciting and interesting.

### Action:

The simple act of wearing odd socks symbolises that it's okay to be different and to embrace our unique traits and quirks.



## Sherdley BLAST



**Meet our BLAST staff – from L-R:-  
Miss Follin, Mrs Woods, Mrs Gaffney, Mrs Stout & Mrs Brown**

### **Breakfast Club**

Mrs Woods  
Mrs Gaffney  
Mrs Stout

### **After School Club**

Mrs Woods  
Miss Follin  
Mrs Brown

**Our children have returned to BLAST and have been having lots of fun in Autumn 1 Term. This week has included lots of Halloween themed arts and crafts and an end of half term party food tea.**

### Reminder for parents:-

- All bookings must be made the day before via School Money- you cannot book on or cancel a place on the day.
- Any child booked on the early breakfast session must arrive before 8.20am if they require breakfast.
- Please do not turn up for BLAST without booking as we rarely have spaces so your child won't be able to stay.
- Late charges are applied if you collect your child late from after school club at both the 4.15pm and 5.30pm sessions. **These charges must be cleared within 5 days.**

# Autumn 1 Term in BLAST





# HOCKEY

October Half-Term

# CAMP

**SAVE THE DATE!**

**27th OCTOBER**

**10:00 – 13:00**

- Want to try a new sport?
- Looking for a new club?



**Sutton Leisure Centre**

**Elton Head Rd.**

**St. Helens**

**WA9 5AU**

**BOOK NOW!**

[admin@sthelenshockey.com](mailto:admin@sthelenshockey.com)

2  
0  
2  
5



**AGES**

**10 – 16**

**Free  
Sticks to  
borrow!**

**£5**

**OPEN TO ALL!**

# Support for parents

Whatever family life brings, we're here to help.

**There's no such thing as a perfect parent.**

**One day, all is calm, the next it's chaos.**

The NSPCC, have an abundance of advice and support for parents and carers. Please take some time to access the following link. You will find advice about:

**Early parenting advice** - Babies and crying, Toddler tantrums

**Managing family life** - Supporting your child through separation and divorce

**Staying safe online** - Social Media, Online Wellbeing

**Healthy Relationships** - Dealing with bullying, Talking to your child about Racism

**Supporting your child through a bereavement**

**Supporting yourself** - Anger management in children, supporting your child as a young carer, feeling lonely as a parent

<https://www.nspcc.org.uk/keeping-children-safe/support-for-parents/>

Support & advice for parents | NSPCC



## Term Dates 2025 – 2026



### Term Dates for September 2025– July 2026

#### Autumn Term:

Open on the morning of Tuesday 2<sup>nd</sup> September 2025  
Close on the afternoon of Friday 24<sup>th</sup> October 2025

Open on the morning of Tuesday 4<sup>th</sup> November 2025  
Close on the afternoon of Friday 19<sup>th</sup> December 2025

#### Spring Term:

Open on the morning of Tuesday 6<sup>th</sup> January 2026  
Close on the afternoon of Friday 13<sup>th</sup> February 2026

Open on the morning of Monday 23<sup>rd</sup> February 2026  
Close on the afternoon of Friday 27<sup>th</sup> March 2026

#### Summer Term:

Open on the morning of Monday 13<sup>th</sup> April 2026  
Close on the afternoon of Thursday 21<sup>st</sup> May 2026

Open on the morning of Monday 1<sup>st</sup> June 2026  
Close on the afternoon of Friday 17<sup>th</sup> July 2026

#### Easter Bank Holiday:

Good Friday: 3<sup>rd</sup> April 2026

Easter Monday: 6<sup>th</sup> April 2026

#### Bank Holiday During Term Time:

May Day: Monday 4<sup>th</sup> May 2026

#### Inset Days:

Monday 1<sup>st</sup> September 2025

Monday 3<sup>rd</sup> November 2025

Monday 5<sup>th</sup> January 2026

Friday 22<sup>nd</sup> May 2026

Monday 20<sup>th</sup> July 2026

## Sherdley Shares



**St Helens  
Santa Dash**  
Saturday 29th November 2025

**4k  
route**

**Adult £10, Child £5,  
Family of 4 £20**  
(Children aged 3 and under are free)  
(includes a Santa hat and medal)

**Arrive from 10.30am & Start 11.00am**  
**Victoria Park, St Helens**

**SPONSORED  
BY:**  
  
**BFS**  
BESPOKE FUNDING  
SOLUTIONS LTD

**BOOK HERE:**  


**ORGANISED IN  
PARTNERSHIP  
WITH**  
  
**ST HELENS  
BOROUGH COUNCIL**

 **Willowbrook  
Hospice** Every Contact Counts  
Registered Charity No. 1020240

 [www.willowbrook.org.uk](http://www.willowbrook.org.uk)  
 **01744 453798**

 Registered with  
FUNDRAISING  
REGULATOR

## Sherdley Shares

### Little Children, Big Feelings!

New Course starting 5<sup>th</sup> November 2025

Do you want to...

- help your child develop the skills they need to deal with challenges or change?
- learn how to support your young child to deal with big emotions in a calm, constructive ways?



1 session per week for 6 weeks  
Reserve your place today!

### Contact us to find out more:

Call or Text: Teresa Slee 07749709715 or call 01744 677328

Email: [teresaslee@sthelens.gov.uk](mailto:teresaslee@sthelens.gov.uk)

OR

Call our Admin team: 07702 959814

Email: [adultlearning@sthelens.gov.uk](mailto:adultlearning@sthelens.gov.uk)



LIVERPOOL  
CITY REGION  
COMBINED AUTHORITY



# SAFEGUARDING AT SHERDLEY



## Designated Safeguarding Leads



**MRS BENNETT**



**MRS ECCLESTON**

## Deputy Designated Safeguarding Leads



**MR GAWNE**



**MRS STROUD**



**MR DAVIES**

**Contact us: [sherdley@sthelens.org.uk](mailto:sherdley@sthelens.org.uk)  
01744 678683**

DSLs and Deputy DSLs are outside, around school most mornings. If you have any worries or concerns, please speak to one of us. We can also be contacted via the Sherdley email – [sherdley@sthelens.org.uk](mailto:sherdley@sthelens.org.uk) or the Parent App. If you would rather not share information with the office team, you can request a call back regarding a safeguarding worry.



## Sherdley Shares



**catch** NHS  
Common Approach To Children's Health

**Empowering you to manage your family's health and wellbeing**

A free app providing local NHS-approved support and information to expectant mums, parents and carers of children aged 0-5



catchapp.co.uk  
@catchapp\_uk  
search for catch app

 **Family Hub**

### 0-19+ Service Launches Instagram

## 0-19+ Service Instagram page



The [0-19+ Service St Helens](#) Instagram page is packed full of service information, updates and news. The page is aimed at parents and carers and shares public health messages and promotes the service offer across the borough. The team has also produced video content to help service users feel at ease when accessing clinics.

## Sherdley Shares

# Neurodevelopment pathway drop ins



**Mersey Care**  
NHS Foundation Trust

**Come along to one of our drop in sessions in St Helens.**

Our team will answer questions you have about the neurodevelopment pathway process.

You don't need to be using our service, you can drop in if you have any questions to ask about this.

We look forward to meeting you.

**Tuesdays at Parr Children's Centre and Central Link Family Hub**

See details and times below

**12 August** at Parr Children's Centre, 9am to 12 noon.

**23 September** at Central Link Family Hub, 1pm to 4pm.

**25 November** at Central Link Family Hub, 1pm to 4pm.

**26 August** at Central Link Family Hub, 1pm to 4pm.

**7 October** at Parr Children's Centre, 9am to 12 noon.

**9 December** at Parr Children's Centre, 9am to 12 noon.

**9 September** at Parr Children's Centre, 9am to 12 noon.

**18 November** at Parr Children's Centre, 9am to 12 noon.

**16 December** at Central Link Family Hub, 1pm to 4pm.

We work with children and young people with complex neurodevelopmental difficulties, who need an assessment to gain a better understanding of their needs.

Sutton Family Hub, Ellamsbridge Road, Sutton, St Helens, WA9 3PY

Central Link Family Hub, Westfield Street, (off Peter Street), St Helens, WA10 1QF

If you need more information you can contact us on 01744 415 608 or email: [mcn-tr.sthelensneuropathway@nhs.net](mailto:mcn-tr.sthelensneuropathway@nhs.net)



## Sherdley Shares



**St Helens Family Hub & Children's Centres**

### Our Family Hub offer:

- Early education
- Family friendly support and advice on pregnancy, child development and family health
- A seasonal timetable of activities for children
- Parenting programmes
- Speech and language support
- Volunteering Opportunities
- Help with access to employment - support with work or training
- Half term holiday activities and food programme

## SUTTON FAMILY HUB

Ellamsbridge Road  
Sutton  
St Helens  
WA9 3PY

Telephone: 01744 671788  
Email: [childrenscentres@sthelens.gov.uk](mailto:childrenscentres@sthelens.gov.uk)  
Opening hours: 9:00am - 5:00pm



## Sherdley Shares

[www.sthelens.gov.uk/socialcare](http://www.sthelens.gov.uk/socialcare)

### SOCIAL CARE

Tell us about a child  
being abused or  
neglected

Get help, support or  
social care

Children's services

Contact Cares

Adult Social Care Strategy

Protecting vulnerable adults

Emergency Duty Team

Care homes

Adults with additional needs

Occupational therapy

Supported Living

Living independently at home

Help with visual problems

Pause

Mental health support

Adult Social Care Market Position  
Statement

### CHILDREN'S SERVICES

[www.sthelens.gov.uk/article/1816/children-s-services](http://www.sthelens.gov.uk/article/1816/children-s-services)

Concerned about a child's safety or welfare?

Adoption, fostering and special guardianship

Care leavers

Family Hubs

Why join St Helens Children's Social Care?


St Helens Children We Look After Council

Commissioning services for children's social care

Disabled children and young person's register

Oral health for ages 0-19





# Do something life changing...

**Make specialist foster care your career**

- Weekly fee and allowance up to £1,000
- Extensive training
- Exceptional support

**Get in touch to find out more**

**03456460098**

**[Enquiry@foster4.co.uk](mailto:Enquiry@foster4.co.uk)**



**F<sup>4</sup>OSTER**

St Helens  
Borough Council

**ST HELENS**  
BOROUGH COUNCIL