

# What's on offer in Reception?

September 2024

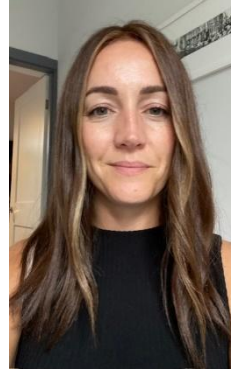


# The team

The staff working with Reception next year are:



Miss Kaur



Miss Hodges



Miss Welford



Miss Barnes



Miss Anwar



# The team

Additional staff supporting Reception this year are:



Miss Collier



Mrs Leech



# Our EYFS

- Recognises the importance of play
- Gives flexibility to plan for interests
- Encourages parents and practitioners to work together
- Indoor & outdoor learning environment
- Covers the seven areas of learning



# Personal, social and emotional development

- Managing emotions
- Managing behaviour
- Making friends



# Physical development

- Small and large movements
- handwriting



# Communication and language

- Vocabulary
- Listening, speaking and understanding
- Enjoying and understanding stories
- Imaginary play
- Following instructions



# Understanding of the world

- Past and present
- Important historical figures (recent)
- Communities
- Cultures



# Expressive arts and design

- Messy activities
- Music and dance
- Building and designing
- Exploring a range of media
- Role-play and make believe

# Literacy

- Comprehension and understanding of what has been read
- Word reading consistent with phonic knowledge
- Write simple sentences



# Maths

- Develops a deep understanding of numbers to 10
- Explore and represent patterns with numbers to 10



# Phonics and Reading

- At Kings Road we teach phonics following the Twinkl Phonics complete programme.
- Phonics is taught daily at **9.05am**. It is so important that your child is in school on time so they don't miss the sessions.
- Daily home learning sheets will come home with your child most days. Please support them to complete these each day. They do not need to be returned to school.
- Weekly parent help sheets will come home every Friday, along with a phonics mini-book - please use these to support your child.



# Phonics and Reading

- 2 reading books sent home each week - 1 x Phonetically decodable and 1 x shared reader.
- Your child should practise reading the phonics book **without** any help. They should read it every day at home.
- Your child's book will be changed once a week (the day will be written on the Reading Record) but they must bring their book every day.
- Please sign and comment in the reading record at least once a week - more is great!



# Maths

- At Kings Road we follow the White Rose Maths Scheme.
- The new EYFS Framework (2021) made maths seem 'easier'.
- However the depth of knowledge they are required to have has increased.
- The curriculum includes more than what is assessed at the end of the year.
- Vocabulary is as important in Maths as it is in English.



# Foundation stage profile

- 17 goals - end of Summer
- Emerging or expected
- GLD

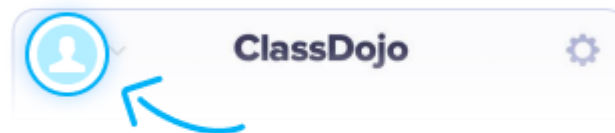


# Class Dojo

- This is how we communicate with you about what is happening at school. Please ensure you have connected to your child's class.
- Child Portfolio's - You should all have received an invitation to access your child's portfolio. School staff will share some special learning moments on here. We ask that parents also share regular learning moments they observe at home!

## Account switcher

Best for family devices



Log in to your child's account by tapping the profile bubble on any device



# School milk and snacks

- [www.coolmilk.com](http://www.coolmilk.com) is where you sign up for your child to receive free milk until they are 5. A small charge applies after they are 5 or your child can stop receiving milk.
- School have no management of it, must be accessed through the website.
- It can take 10-14 days for a child's name to appear on the list after registering
- If your child requires non-dairy milk you can provide this from home



# Packed lunches from home

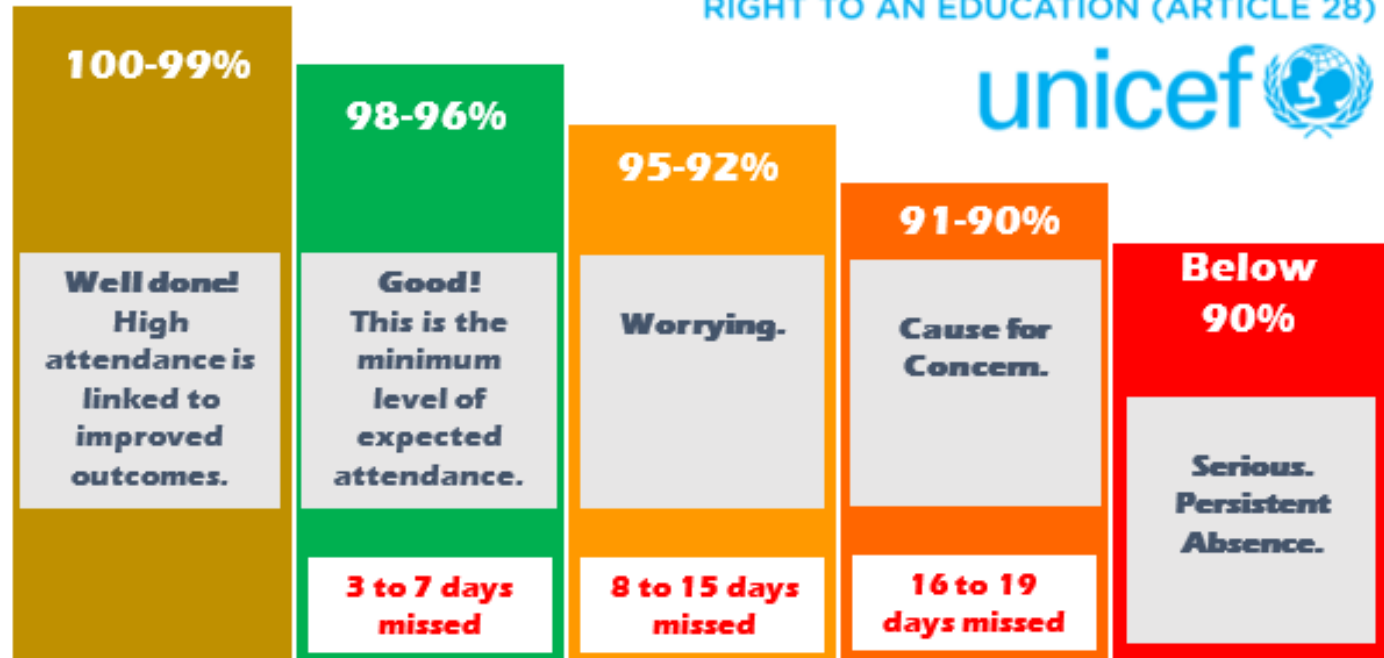
- If you are providing a packed lunch from home for your child, please remember that we are a healthy school and encourage our families to be mindful of this when providing lunches. No nuts please.
- Please ensure your child brings their packed lunch in a lunch box or a disposable bag. Please do not put packed lunches in the school bag with the reading books.
- Children should not bring snacks from home, the government fruit scheme is running so children have access to a piece of fruit everyday.
- Please remember that every child needs to bring a full, named water bottle to school each day.



# Pupil Premium

- Funding provided to school to enhance opportunities for children.
- Based on earned income.
- If you are in receipt of benefits school could receive additional funding for your child. Please complete the School's Free School Meal / Pupil Premium form which can be obtained from the School Office. This process will then be completed on your behalf and you will be notified of the outcome. Or visit <https://www.cloudforedu.org.uk/ofsm/sims-trafford> and complete the application. School will be notified of the outcome.





**There are 175 non-school days a year.**  
Please use these for holidays, family visits and routine appointments.

<b>WELL DONE!</b> High attendance links to improved and high achievement, which means greater success.	<b>Worrying</b> Too many missed school days. Less Chance of success.	<b>Concern</b> Reduced chance of success.	<b>Serious</b> Lowest chance of success. Possible court action.
---	---	--	--



# Other available services

- EAL Lead - Gill Hoodless
- SENCO - Michelle Barlow
- Child and Family Mentor - Jo Whiteside
- Office Staff - Miss Wrigley, Miss Wright, Mrs Scott and Ms Kour
- Head of Key Stages - Clare Wallis, Jo Thirkhill, Gill Hoodless
- Before and After School Club - Janice Marshall



# English as an Additional Language

- Do you speak another language at home?
- Importance of accurate and up-to-date pupil records!
- Support in school - *language focus*



Talk... in any language  
at EVERY opportunity!



# Child and Family Mentor

- To support the social and emotional wellbeing of our children and families.
- Provide support and advice around:

Children's Social & Emotional Wellbeing

Family Issues

Local Services

Parenting/Children's behaviour

School Life

Or simply be a friendly listening ear.

To speak to Jo pop into the school office or call her on 07875964968



# Michelle Barlow – SENCO (Special Educational Needs Co-ordinator)

A SENCO is the school teacher who is responsible for assessing, planning and monitoring the progress of children with special educational needs and disabilities (SEND).

## Who I speak to / work with:

- Health visitors
- Speech and Language Therapists
- Paediatricians
- Occupational Therapists
- Educational Psychologists
- SENAS
- Parents
- Children

## What I do in school:

- Observations
- Meetings
- Referrals
- Support teacher/TAs



# Finally...

If you have any concerns or issues during the next year please speak to one of us.

Many Thanks

