

Kingsbridge Community College

Year 7 Welcome Booklet



“An outstanding learning community where individuals thrive”

Welcome to Kingsbridge Community College

Welcome to Kingsbridge Community College. We are so pleased you have chosen to begin the next chapter of your life with us and we are very much looking forward to meeting you.

In the following pages, we have put together all the key information about life at KCC, including how we will support you to be successful scholars, who you can speak to if you want to know something and answers to lots of other questions that you might have about.

Meet the team



Mrs Graham
Principal



Mrs Stead
Deputy Principal



Mr Chisholm
Assistant Principal



Miss Ray
Assistant Principal
Designated Safeguarding Lead



Ms Lilley
Assistant Principal
Director of Sixth Form



Ms Blumer
Assistant
Principal
SENDCo



Miss Richards
Inclusion Lead
Year 7



Miss Cox
Raising Standards
Lead
Year 7

Letter from the Principal

Dear Parents and Carers,

We are delighted to confirm that your child has been allocated a place at Kingsbridge Community College in September 2025. We very much look forward to meeting both you and your child in the coming months and welcoming you into the KCC community.

We have already been in touch with your child's primary school teacher and will continue to work closely with our primary colleagues to ensure the transition from primary to secondary is as smooth as possible.

You will receive an email with login details to the transition portal at the end of April. The portal is where you will complete the necessary data collection forms as well as providing you and your child with all relevant information about starting KCC.

Once you have received this, if you would like to receive further communication or any of the documentation in hard copy format then please do get in touch via the welcome@kingsbridgecollege.org.uk email address and we will be happy to arrange this for you.

Moving forward, here are some important dates for the diary:

| | |
|--|---|
| Monday 28th April: | Online transition portal becomes live for parents and carers |
| Friday 16th May: | Deadline for admissions forms to be completed in the portal |
| Wednesday 18th June: | Enhanced transition day for EHCP/EHCP pathway students |
| Wednesday 18th June | SEND Information Parents Evening - 18:00 at KCC |
| Week Commencing 23rd June: | Tutor group allocations sent out |
| Wednesday 2nd July OR Thursday 3rd July | Induction days for students – letter will be sent to confirm which day each student will attend |
| Thursday 3rd July: | Induction evening for all students, parents and carers 16:00 – 17:30 |
| Monday 4th to Friday 8th August: | The Big Step Summer Transition Programme https://thebigstep.org/school/kingsbridge-community-college |
| Thursday 4th September | First day of Autumn Term for students |

If you have any further queries, please discuss these with your child's primary school and, if appropriate, with our transition team at KCC via the transitions email address – welcome@kingsbridgecollege.org.uk

We look forward to meeting you soon.

Yours sincerely

Tina Graham.

Tina Graham
Principal

Starting at KCC

1. Uniform and equipment

All uniform can be ordered from the Proserve website <https://proservegroup.com/>. Proserve will be attending the Induction Evening on Thursday 3rd July for students to try on uniform and so you can collect order forms. All the equipment students need for their day can be purchased in college. This includes pens, pencils etc, as well as scientific calculators and geometry sets.

2. Set up your ParentPay account

You can load money onto a cashless catering system if you would like your child to use the catering outlets at break times. The easiest way to do this is to use the ParentPay portal on the college website. You will be sent an activation letter from Finance in the summer term, which will contain your username and a one-time password. This will be needed to set up your account. When you top up using this, the money is added instantly into your child's account. Students can add cash to this system via one of the pay-in machines at college.

If your child is eligible for Free School Meals (FSM) the money is added automatically and parents/carers can top up further if they wish to.

3. Extra-Curricular

Have a look at the KCC website and the extra-curricular page of this booklet to think about what clubs you would like to get involved with at KCC. We challenge students to be 'opportunity magnets', so knowing what opportunities there are available can help you make the most of what the KCC Community has to offer.

4. Transport

During the summer break all students travelling into college by college transport will receive a letter, booklet and their bus pass, with all the information they need including contact information for arranging transport. The Devon County Council number is 01392 383000 and select transport when prompted.

5. After enjoying a long summer holiday, students join us on Thursday 4th September 2025

Students need to arrive at college by 8.40am for their first day and go straight to Main Hall. There will be lots of teachers there to show you where to go. Don't forget to bring a bag big enough to hold exercise books, a water bottle, and the equipment needed for the day.

KCC Vision and Values

We expect all our students to meet the Behaviour for Learning expectations within the college day, whilst on trips and visits off site and on their journey between home and college. Everything we do at KCC is underpinned by our values:

KCC Vision: to be an outstanding learning community where individuals thrive

KCC Values: are based on being a scholar

| | |
|----------|--|
| S | We define our success ourselves and we understand it means different things to different people. |
| C | We look after each other and we also look after ourselves. We understand that being kind to ourselves and others is critical for our community to be the best it can be. |
| H | We know that hard work underpins our future success. We work hard to achieve our goals – whatever they may be. |
| O | We do everything to the best of our ability. We think about every action we take and how we can do it to have the best impact on ourselves and others in our community. |
| L | We believe that we are all leaders and that leaders do so in many different ways. We believe we should be great role models for everyone around us. |
| A | We believe that we can achieve great things and that everyone can aim high. We do not judge others for their goals but we support them to achieve their best. |
| R | We believe that we can overcome the obstacles that we will face. We never give up if something is challenging. We know that we can rely on others around us to be positive and support us. |

Successful **C**onsiderate **H**ard-working **O**ur best selves **L**eaders **A**spirational **R**esilient

We are a UNICEF Rights Respecting School

What does it mean to be a Rights Respecting School?

The Rights Respecting Schools Award puts children's rights at the heart of schools in the UK. UNICEF works with schools in the UK to create safe and inspiring places to learn, where children are respected, their talents are nurtured and they are able to thrive. UNICEF'S Respecting Schools Award embeds these values in daily college life and gives children the best chance to lead happy, healthy lives and to be responsible, active citizens.



Together young people and the school community learn about children's rights, putting them into practice every day. The Award is not just about what children do but also, importantly, what adults do. In Rights Respecting Schools, children's rights are promoted and realised, adults and children work towards this goal together. The Award recognises a school's achievement in putting the United Nations Convention on the Rights of the Child into practice within the college community and beyond.

What are the children's rights?

The United Nations Convention on the Rights of the Child, or UNCRC, is the basis of all of UNICEF'S work. It is the most complete statement of children's rights ever produced and is the most widely-ratified international human rights treaty in history.

The Convention has 54 articles that cover all aspects of a child's life and set out the civil, political, economic, social and cultural rights that all children everywhere are entitled to. It also explains how adults and governments must work together to make sure all children can enjoy all their rights. Every child has rights, whatever their ethnicity, gender, religion, language, abilities or any other status.

Below are the articles focused on at KCC:

Article 3 **(best interests of the child)**

The best interests of the child must be a top priority in all decisions and actions that affect children.

Article 12 **(respect for the views of the child)**

Every child has the right to express their views, feelings and wishes in all matters affecting them, and to have their views considered and taken seriously. This right applies at all times, for example during immigration proceedings, housing decisions or the child's day-to-day home life.

Article 28 **(right to education)**

Every child has the right to an education. Primary education must be free and different forms of secondary education must be available to every child. Discipline in schools must respect children's dignity and their rights.

Article 29 **(goals of education)**

Education must develop every child's personality, talents and abilities to the full. It must encourage the child's respect for human rights, as well as respect for their parents/carers, their own and other cultures, and the environment.

Home College Agreement

Staff and Governors at Kingsbridge Community College believe that students will have the **best opportunity to achieve their full potential** if the college, parents and carers and students themselves work **together in partnership**.

Article 28 from the UN Convention of the Rights of the Child: Every child has the right to an education. You should be encouraged to go to school to the highest level possible. Discipline in schools should respect children's dignity.

As a STUDENT, I will:

- **Respect MY right to an education**
- Read and follow the **Behaviour for Learning Policy**
- Read and follow **IT Acceptable Users Policy**
- **Consistently** demonstrate and role model **scholarly behaviours and expectations**
- **Attend** college regularly and **on time**, avoiding ALL unnecessary absences
- Be **prepared** for the college day wearing correct uniform with the equipment for the day
- **Complete** all home learning set to the best of my ability

Student Signature: _____ Date: ____/____/____

Parent/Carer Full Name (Please Print): _____

As a PARENT or CARER, I will:

- **As a duty bearer, uphold my child's right to a good education**
- Read and support the **Behaviour for Learning Policy**
- Ensure my child **attends regularly** and **punctually** as required by **law**; avoid ALL unnecessary absences, including holiday during **term time**
- **Ensure** my child attends college wearing the correct uniform and with the correct equipment every day
- **Communicate** with **all staff** at Kingsbridge Community College in a **respectful manner**
- **Ensure** my child completes all home learning set to the best of their ability

Student Signature: _____ Date: ____/____/____

Parent/Carer Full Name (Please Print): _____

As a member of STAFF, I will:

- **As a duty bearer, uphold a child's right to a good education**
- Fulfil the legal duty to **keep students safe**
- **Implement** the **Behaviour for Learning Policy**
- Reinforce and role model **scholarly behaviours and expectations**
- **Implement** the college's **curriculum intent**

As a GOVERNOR, I will:

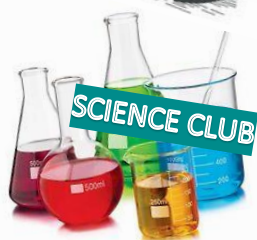
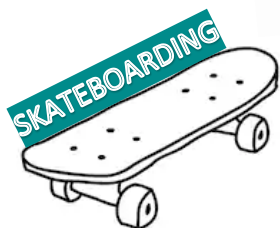
- **As a duty bearer, uphold a child's right to a good education**
- Carry out the **legal responsibilities** to the college
- Provide **college policies** that care for every student
- Ensure that **funding** received by the college will be used **responsibly**
- **Visit** the college **regularly** for both statutory meetings and to stay **informed** of progress

Successful **C**onsiderate **H**ard-working **O**ur best selves **L**eaders **A**spirational **R**esilient

Extra-Curricular Activities at KCC

Our extra-curricular clubs provide a fantastic opportunity for you to make new friends and try out new activities. Whether it is rock climbing, debating, photography or busking – there are so many things that you can get involved in.

Why don't you choose one and make a pledge to yourself to come along in September?



Successful **C**onsiderate **H**ard-working **O**ur best selves **L**eaders **A**spirational **R**esilient

Wellbeing at KCC

Health and wellbeing are key ingredients to making sure you have a rich and fulfilling student experience. We recognise that it is much more difficult to learn and enjoy student life when practical and personal difficulties get in the way. We work with Early Help 4 Mental Health (EH4MH) and Child and Adolescent Mental Health services (CAMHS) for students that need additional, specialist support. However, at KCC we also offer a wide range of ways to support student wellbeing for all. You can find all of our wellbeing information at: [KCC Well Being](#).

PSHE

We have a comprehensive PSHE programme that covers:

- Mental health and wellbeing
- Physical health (including healthy lifestyles and first aid)
- Learning about safe, healthy relationships and sex (including understanding consent, negotiating life online, intimate relationships)

Tutor groups and tutorial sessions

All year groups are supported with a tutorial programme that has a focus on student wellbeing. Students are signposted to the self-help materials that can be accessed in a range of formats including books from the main library, websites such as Kooth.com and mobile phone apps such as Headspace and Calm.

Mental Health Ambassadors (MHA)

We have an extremely successful Mental Health Ambassador programme led by our sixth form MHA team who have been fully trained by EH4MH and offer peer mentoring sessions to students who have requested MHA support. In these sessions they can explore ways to keep mentally healthy, stay active and balance work with guidance on relaxation and mindfulness techniques.



KCC Anti-Bullying Ambassadors

The College has 30 Anti Bullying Ambassadors from across KS3 and KS4 whose role is to support other students who have been impacted by bullying and to help promote kindness in college as well as how to report incidents. They share messages around anti-bullying at assemblies and through PSHE.

Extra-Curricular wellbeing support groups

Café Connect is a place to meet, chat and connect. It provides a weekly wellbeing drop in space with a focus on wellness, health and self-care. Students have the chance to learn something new, give back, get active and have a chat. It offers a safe, informal space to empower students to put into practice the five ways to wellbeing; to be connected, give, be active, be present and learn new skills.

Welfare support

The culture at KCC is based around “behave like a scholar” and our fantastic members of staff are here to help you achieve this. Our **Inclusion Team** is here to help support and celebrate students’ successes including intervention such as support, mentoring and signposting. They also act as a close link with parents, carers, students and staff.

Assistant Principal - Mr Tom Chisholm

Tom.chisholm@kingsbridgecollege.org.uk



Inclusion Lead Year 7 – Miss Kirsty Richards

Kirsty.richards@kingsbridgecollege.org.uk

Inclusions Leads are non-teaching staff and are accessible to parents and carers for ongoing support of your child alongside their tutors. If a student has any queries or concerns, their form tutor, or Inclusion Lead is the first point of contact.

Raising Standards Lead Year 7 – Miss Cox

Hannah.cox@kingsbridgecollege.org.uk

Raising Standards Leads work with a year group and the year group tutor team to make sure that students are striving to be their best selves.



SEND Support

SENDCo - Ms Jane Blumer

Jane.blumer@kingsbridgecollege.org.uk

Our SEND team offers a range of support - these could include:

In-class support, small group work, mentoring, forest schools, literacy intervention, support for conditional wellbeing, specialist careers advice, the Inclusion Hub and special considerations for public examinations.

Our Teaching Assistants (TAs) also act as mentors for a number of students who need someone to touch base with each week. In some lessons, TAs will also be present to support students. TAs also staff a smaller room at Break 1 and Break 2 by a TA for students with higher level needs to meet their friends and have a supervised place for lunch.



Safeguarding

Designated Safeguarding Officer – Miss Kelly Ray

Kelly.ray@kingsbridgecollege.org.uk

Safeguarding underpins everything we do at KCC and we recognise that it is everyone’s responsibility to safeguard and promote the welfare and wellbeing of our students. As part of our Rights Respecting School ethos, everyone at KCC has the right to be protected and every child has the right to express their views, feelings and wishes in all matters affecting them. At KCC we encourage students to raise any concerns of bullying as quickly as they can to staff or via our anonymous Whisper messaging service. All incidents are investigated, action taken and support/education for those involved is provided.



Children are taught to understand and manage risk through our personal, social, health and economic (PSHE) education, with a particular focus on relationships and health. Our approach is designed to help children to think about risks they may encounter and with the support of staff, work out how those risks might be reduced and managed. Discussions about risk are empowering and enabling for all children and promote sensible behaviour rather than fear or anxiety. Children are taught how to conduct themselves and how to behave in a responsible manner.

Rewards and Celebrating Success

At KCC there are lots of ways that we reward your effort and hard work. We are proud of the positive learning and teaching environment that we create and we understand the importance of recognition when students achieve their best. Many of these rewards are added to ClassCharts for students, teachers and parents to see. Staff and students are encouraged to celebrate success at every opportunity and a range of rewards exist for this purpose, including:

- Scholarly Behaviour Points / House points
- Verbal Praise
- Positive Comments in exercise books
- Student of the Week nominations
- Personalised communication with home; by telephone or email
- Postcard or letter of congratulations home
- Termly Celebration Assembly and recognition in other assemblies
- Tutee of the Term nominations
- Cakes with Mrs Graham
- House Events
- Scholar Awards Evening held in the Summer Term

Commendations are also given for:

- Consistently high standards of work or effort over a period of time e.g. 3 subject stickers = 1 subject commendation
- A single outstanding project, assignment or piece of work showing significant achievement or effort
- A notable contribution to the life of the College or community, by participation in a special event or situation
- Reliably carrying out a responsibility over a period of time
- Achieving 10 Scholarly Behaviour Points / House points

These commendations are awarded by your tutor, teachers and other staff to celebrate your amazing hard work. All of your commendations then add up to larger awards at certain amounts.

| How do you achieve commendations? | |
|-----------------------------------|-------------------------------|
| 5 Commendations | Tutor Award |
| 20 Commendations | Inclusion Lead Award |
| 50 Commendations | Principal Award |
| 75 Commendations | Governor's Award |
| 100 Commendations | Exceptional Performance Award |

All students that achieve these awards will receive a certificate and for those students who reach an Exceptional Performance award, will receive a £10 Amazon voucher!

Attendance

Regular attendance is critical for students to make good progress and enjoy their learning. We take a whole college approach to maintaining excellent attendance; it is the joint responsibility of parents, carers, students and staff. Being at college is a very important part of any young person's life. It enables them to learn to make friends and to gain important qualifications and to develop a variety of skills which will prepare them for adult life. College and parents/carers are partners in making this a success. Most of this opportunity is by ensuring a high level of attendance is maintained.

| Description | Attendance % | Days attended | Number of days absent | Hours of lost learning |
|---------------------------|--------------|---------------|-----------------------|------------------------|
| Excellent | 97 - 100% | 184+ | 0 - 6 | 0 - 30 |
| Good | 95 - 97% | 180 - 184 | 6 - 9.5 | 47.5 - 60 |
| Cause for concern | 90 - 95% | 171 - 180 | 9.5 - 19 | 60 - 95 |
| Serious cause for concern | 87 - 90% | 165 - 171 | 19 - 25 | 95 - 125 |
| Critical | -86% | 163 | 26.5 + | 132+ |

Reporting Student Absence

Please notify the College of any absence and the reason why, before 8.30am. This can be done by:

- phoning 01548 852641 and dialling 2 on request,
- by emailing: attendance@kingsbridgecollege.org.uk
- using the Parent ClassCharts app

Parent or carers are expected to contact the College for each day of absence by 8.30am.

We ask that parents or carers try to arrange any dental/medical appointments outside of the college day as not to impact upon your child's learning. Please do not book any holidays during term time as not only will this negatively impact a student's progress but Devon County Council could issue a fine.



EVERY DAY COUNTS



Why is attendance important to my education?

Did you know? **90%** of young people with attendance **BELOW 85%** fail to get good grades.

MISSING **1** DAY A WEEK

=

LOSING ONE YEAR OF SCHOOL LIFE.

Target
97% +

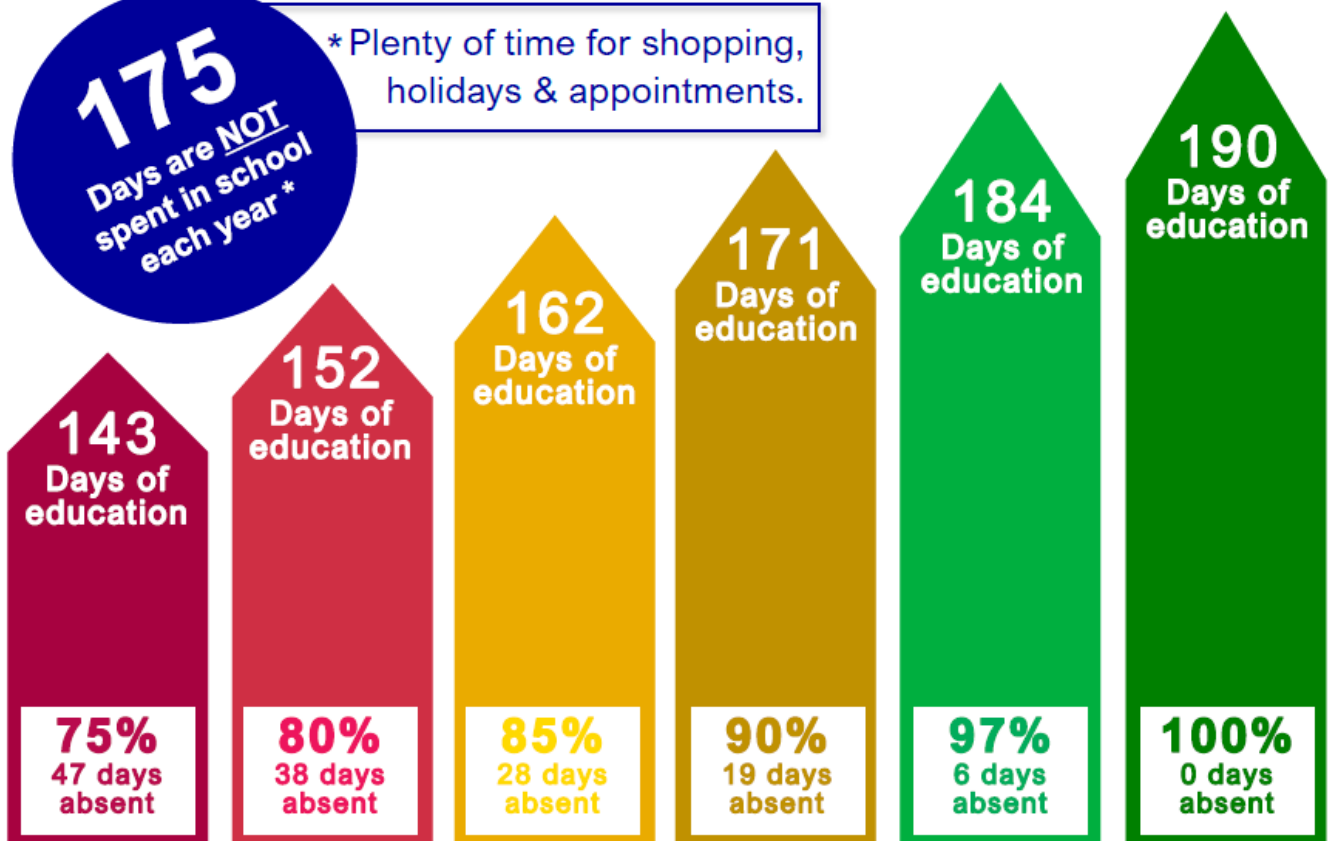
Good attendance means:

Being in school at least 97% of the time, that's at least 184 days a year,



175
Days are **NOT**
spent in school
each year *

* Plenty of time for shopping,
holidays & appointments.



SERIOUSLY WORRIED

Very poor attendance has a serious impact &

VERY CONCERNED

Poor attendance gives less chance of success.

WELL DONE

Good attendance gives the best chance of success.

Successful Considerate Hard-working Our best selves Leaders Aspirational Resilient

Home Learning

At KCC we know that Home Learning is an important part of setting you up for the best possible future. We also know that we must all work together to achieve a healthy work-life balance. You can expect to receive Home Learning from each subject area which will follow a Home Learning timetable.

We set all of our Home Learning on our online platform called ClassCharts, which both students and parents can access. You can access this through an app and it will provide useful reminders of what home learning tasks are due when in order to help manage your time. You and your parents and carers will receive log in details for the platform so that they can help and support you with your Home Learning.

Maths and English home learning tasks are set through Sparx Maths and Sparx Reader platforms. Students will be shown how to log into these platforms in lessons during September so they can complete their assignments.

You will also receive a Knowledge Organiser at the beginning of each cycle. Your Knowledge Organiser will have a section for each topic within each subject which will show you exactly what you need to learn. This will help you complete your home learning and also to revise for your subject assessments.

Attitude to Learning

Your child we receive a weekly attitude to learning grade (AtL) for each subject. This indicates the attitude that your child has towards the subject. Please see the descriptors below:

| AtL 1 | AtL 2 | AtL 3 | AtL4 |
|--|---|--|---|
| You are an outstanding student; you meet all deadlines and you consistently put in your best effort. You demonstrate very effective independent learning skills and participate fully in class activities with others. Your home learning is consistently excellent. You clearly respond to feedback. Your focus on learning and progress is an example to others. | You are a student who is positive in class and contributes to a good classroom ethos. You work well during class activities, your home learning is good and you almost always meet deadlines. You have a positive approach to learning and feedback; you are continuing to develop independent learning skills. | You sometimes produce good work, but frequently only complete the minimum required. Your effort with classroom activities, home learning and your response to feedback is not yet consistent. There is plenty of room for improvement. | You occasionally produce good work or verbal contributions, but frequently cause serious concern. You have not yet tried to meet your targets for improvement. Your actions in the classroom may disrupt learning for others. Your effort in class, with home learning, in response to feedback and your attitude to learning must improve significantly. |

KCC House System



The KCC House System aims to:

- Increase community spirit and pride in our college
 - Encourage good relationships between different year groups
 - Reward students for their positive engagement in the college community
 - Encourage more students to get involved in college competitions and events
 - Develop leadership opportunities for students in KS3, KS4 and KS5
- ✓ We have 7 Houses, with one tutor group from each year group in each house. Each House has two Sixth Form Student Heads of House and members of staff all belong to Houses.
- ✓ Each tutor group will be represented by 2 House Ambassadors - these will alternate twice a year.
- ✓ House points are awarded for; participation in extra-curricular clubs, displaying scholarly values in lessons and participation and achievement in half termly events.

Reading at KCC

Reading sets the foundation for successful learning. Reading will help you to achieve greater things in all of your subjects and is also good for mental health. At KCC we love reading. For most of your morning tutorial slots, you'll be group reading with the rest of your tutor group exploring the KCC reading canon texts. Your tutor will read out loud whilst you are following in your own copy of the book. We have selected the best books to read and you'll encounter at least 3 different books during the morning tutorial slots in Year 7. Of course, we want you to also read outside of this time. We have an incredible library and are always keen to celebrate reading accomplishments and hope that all Year 7 students are also reading outside of the college day as a form of rest and relaxation.



Successful **C**onsiderate **H**ard-working **O**ur best selves **L**eaders **A**spirational **R**esilient

Equipment

Students will be more successful when they are organised and bring the correct equipment to college on the right day. For example, PE uniform on PE days or catering ingredients when you are cooking in Technology. All students are expected to be fully equipped for their day of learning with the key items listed below. Many students will bring additional equipment such as colouring pencils, scissors, etc which they will find very helpful. Tutors will check students are equipped for the day during registration.

In addition, students will also need a calculator for Maths lessons and other subjects. The Maths department suggest students to purchase the following calculator as they are suitable to use from Years 7 to 11: **Casio fx-83GT**.



Calculators are available to purchase from the college shop for £10.00 and Geometry tins for £1.50.

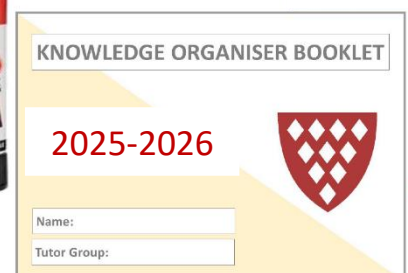


Students will also need a sturdy back-pack to carry their equipment back and forth to college each day including their PE uniform, a drinks bottle and possibly a lunch box as well as their pencil case, planner and reading books. Handbags or shoulder bags are not appropriate for college.

Equipment Check list:

- Pencil Case (black pens, pencils, purple pen, rubber, ruler, glue stick and highlighter)
- Timetable
- Scientific Calculator. We recommend the Casio fx-83GT CW calculator. This is sold for cost price in the college shop and can be purchased from the start of term in Year 7. They will also be available to purchase during the Induction Evening.
- KCC Knowledge Organiser and Home Learning booklet (given to students during tutor time)
- Books for the day

KCC Daily Equipment Check



Successful **C**onsiderate **H**ard-working **O**ur best selves **L**eaders **A**spirational **R**esilient

Uniform

KINGSBRIDGE COMMUNITY COLLEGE UNIFORM

1. Blazers

The black blazer with the College logo must be purchased from the College's recognised supplier. Blazers must be worn at all times around college site, unless taking part in a physical activity at break or lunch time. Students can remove their blazer in class and put on the back of their chair. Blazers may become optional during the final half term of the academic year from May half term onwards. When the college notifies students and parents/carers of this due to the hot weather, students may choose whether or not to wear a blazer.

2. Skirts

Red/grey tartan skirts must be purchased from the College's recognised supplier.

No other skirts will be permitted. Please ensure the hem of the skirt is just above the knee and at least longer than the ends of their fingers when arms are down by their sides.

3. Trousers / Shorts

Grey formal, tailored trousers or shorts. Skin-tight trousers, jeans or jean/chino-style are not permitted. These are available from Proserve but can be purchased from any supplier.

4. Shirts

White long-sleeve shirt or short-sleeved shirt with collar (worn tucked in to skirt/trousers/shorts at all times). Plain white t-shirts only may be worn as a vest under shirts. White shirts are available from Proserve but can be purchased from any supplier.

5. Jumpers

These are optional but if worn, must be purchased from the College's recognised supplier. Students may only wear KCC V-neck jumpers with a logo; no other jumpers, fleece tops, hoodies or body warmers are to be worn in College.

6. Shoes

Shoes must be black and polishable (not canvas or suede). The shoes must be 100% black with a black sole. There must be no 'extras' on the shoe at all. A selection of acceptable and non-acceptable shoes and brands are contained within this document.

7. Socks

Plain black or plain white ankle length socks (no coloured, sports or socks with logos).

8. Tights

Tights can be flesh-coloured or black. Students will be asked to remove any white/coloured socks that are worn over black tights.

9. Outdoor Coat

Students need an outdoor coat for College. It must be removed in lessons.

10. Jewellery and Piercings

No excessive jewellery. Students wearing excessive jewellery or belts will be asked to remove the items and hand them in to Student Support for collection at the end of the college day. One small, plain nose stud is acceptable. Nose rings are not permitted. Earrings must be a single pair of simple studs or small hoops. Students may wear one ring on each hand. Additional jewellery will be confiscated and returned to students at the end of the day.

11. Nails

If nail varnish is worn then it must be of a neutral colour and nails must be kept at a sensible length.

Uniform

KINGSBRIDGE COMMUNITY COLLEGE UNIFORM



Black Blazer



Tartan Skirt



White long sleeve or short sleeve collared shirt



Grey Tailored Trousers /Shorts



Black College Jumper (optional)



Red/Grey Tie

Registered stockist: www.proservegroup.com

Uniform

KINGSBRIDGE COMMUNITY COLLEGE UNIFORM

Examples of ACCEPTABLE shoes (this is not an exhaustive list)



Examples of UNACCEPTABLE shoes (this is not an exhaustive list)



Shoes must be 100% black with a black sole they will be acceptable.
There must be no 'extras' on the shoe at all.

Uniform

PHYSICAL EDUCATION UNIFORM

All students must have:

- KCC P.E. Top
- Navy shorts or skort
- Trainers
- Navy/red games socks
- Shin-pads for all football and hockey lessons
- A gum shield is compulsory for hockey and strongly recommended for rugby (if possible, this should be designed and fitted by a dentist)
- Football/rugby boots
- Long-sleeved rugby top
- Trainers (these must be different to students' school shoes)
- KCC PE half zip or a fitted plain navy jumper (optional)
- Navy leggings (optional)

All students must wear the correct PE uniform. There are additional top layers that are available from Proserve, however they are not compulsory. If you do not want to buy the KCC long sleeved PE tops then any plain navy sweatshirt will be acceptable for use in the winter months. These must be completely navy in colour, with no logo or brand and must not be a hoody. An example of an acceptable sweatshirt is as follows:



Students should not bring high valuable items with them when they have PE or clubs. It is the student's responsibility to look after items that they bring into college. The changing rooms will be locked during lesson times. Students will need £1.00 coin should they wish to use a locker whilst at the Sports Centre.

Participation in PE lessons in the case of injury or following illness:

Students must present an acceptable note from a parent or carer for any non-participation in PE.

If students cannot participate fully due to injury, they must bring normal PE kit and a warm coat (when weather is poor) so they can help with organisational duties, coaching and refereeing.

All jewellery must be removed for lessons and clubs and hair must be tied back.

Any ears that have recently been pierced must have the studs taped over when participating in lessons (student to supply the tape.)

WATER

Water may be consumed in lesson times at the discretion of staff. Please be aware that in some lessons water bottles may not be allowed due to health reasons where certain activities are undertaken.

Drinking fountains are also placed around the college so that students can fill up bottles at break times. Water is also available from the food outlets at break times.

Uniform

PHYSICAL EDUCATION UNIFORM

Available from Proserve <https://proservegroup.com/kingsbridge-community-college>



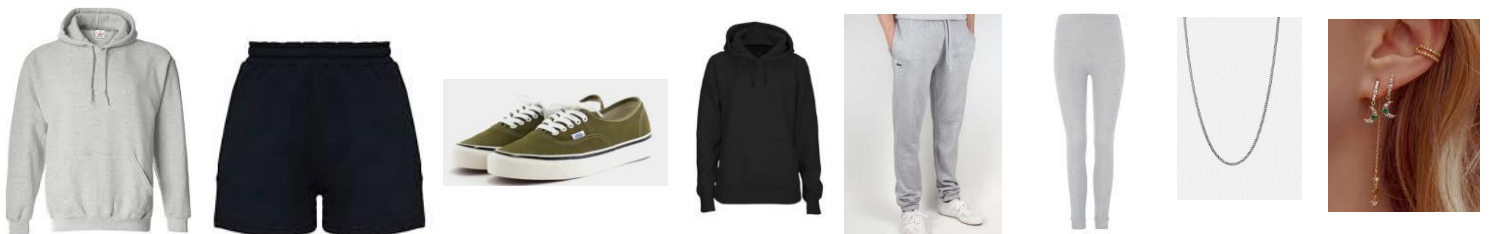
Optional KCC PE UNIFORM

The following items are also available from Proserve and are permitted for PE. If you want to wear a long-sleeved top this must be either the quarter zip KCC Jumper, a base layer under your polo or the long-sleeved PE top. If you do not want to buy the KCC long sleeved PE tops then any plain navy sweatshirt will be acceptable for use in the winter months. These must be completely navy in colour, **with no logo or brand and must not be a hoody**. Please see the example of an acceptable sweatshirt. If you want to wear long trousers this must be KCC leggings, KCC training pants or plain navy leggings/base layer. ***On days where it is raining you may wear a coat at your teachers' discretion***



Below are examples of Items that are not allowed in PE
Hoodies are not allowed in PE)

(In line with college policy



Students are expected to attend lessons in college full uniform before changing into PE uniform. If students have had a lunch time club such as dance or Super League then they may stay in PE uniform after their PE lesson. Their period 5 teacher will expect them to have a club sticker in their planner on that week.



Successful **C**onsiderate **H**ard-working **O**ur best selves **L**eaders **A**spirational **R**esilient

No Mobile Phone Zone

College is a safe learning environment and mobile phones do not have a place in this. Mobile phones must not be visible or switched on at college at any point.

If students do have their phones out, they will be expected to hand them over to a member of staff. They are phones are then held securely to be collected at the end of the day.



Lockers

Lockers are available at £10.00 for the college year. Information letters will go home to all students in September with the necessary form to be completed in order to reserve a locker.

Lockers are assigned on a first come first serve basis. you can also share one with a friend if needed.

Food Glorious Food

There are lots of different places where you can buy food here at KCC, including The Hub, The Snack Shack and The Pit Stop.

Breakfast

Before the start of the college day The Hub canteen is open for you to buy a croissant, a selection of fresh fruit options and drinks.

Break and Lunch

There are several catering outlets where you can purchase food at either break or lunch time:

- **Pit Stop** sells Mainly Paninis ranging from £2.47
- **Snack Shack** (outside cabin next to English block with covered outdoor seating area) sells a selection of Rolls, wraps and a wide range of both Hot and Cold Snacks ranging from £1.40 - £2.47
- **Hub** canteen offers Bola pasta/Curry Bar from £2.00, a wide variety of grab 'n' go items both hot and cold from £1.40- £2.15 plus daily specials at £2.15, we also supply a large range of Vegan, Vegetarian and Gluten free products some which are to be Pre-ordered with a Member of the catering staff please ask for more info if required.

Snacks

All the outlets have a range of cold drinks, fresh fruit options, veg sticks with dip pots, traybakes/cakes and snacks like jelly pots and lentil waves, on offer throughout the day to supplement the main offer at each one.

To buy food during your first few days at college you can pay with cash until you are set up with your pin/biometrics.

Your pin is the same number that you will use to access the College printers, you can top up your account at several top up points on the College site. These can be found:

- By reception
- In the entrance to The Hub
- On the lower floor of the Westville building.

All new students have the opportunity to enrol on the Schools Biometric system with Parental Permission. Once registered the student will be able to use the cashboxes on site, usually positioned near the canteens, to add money to their accounts and check current balances.

The fingerprint can also be used at all till points when purchasing food making it a very quick, easy and secure process.

Common questions answered for new students

Q: How many students are at KCC?

A: There are currently 1,200 students at KCC.

Q: What do I do if I get lost?

A: It is absolutely fine if you get lost, just ask any member of our community and they will be happy to help.

Q: Will I get told off for being late if I get lost?

A: No, it is completely normal to get lost in your first few days and teachers will not tell you off for this. Just ask anyone for directions and they will be sure to help.

Q: What do I do if I feel unwell?

A: Tell your teacher who will help you.

Q: Will I be put in a tutor group with my friends?

A: Your tutor groups are formed by speaking to your primary teachers and thinking about who you work best with. We will always try to make sure you are with at least one friend you tell us about.

Q: Who will my tutor and teachers be?

A: You will have an opportunity to meet your tutor during the Year 6 welcome evening in July and we look forward to seeing you then. You will find out who your teachers are on your first day when you get your new timetable.



Term Dates 2025-2026

ESW School Term Dates: 2025-26 Academic Year

</

College Contact Information:

General Enquiries

College Reception: 01548 852641
admin@kingsbridgecollege.org.uk

Attendance

Attendance Officer: Lyn Crowe 01548 852641 Ext. 2556
attendance@kingsbridgecollege.org.uk

Transport Queries

Devon County Council: 01392 383000

Welfare/Student Queries

For pastoral support please contact the students form tutor in the first instance via the main College number: 01548 852641

Inclusion Lead Year 7: Miss Richards 01548 852641 Ext. 2507
Kirsty.richards@kingsbridgecollege.org.uk

Raising Standards Lead Year 7: Miss Cox
Hannah.cox@kingsbridgecollege.org.uk

Assistant Principal (Welfare): Mr Chisholm 01548 852641 Ext. 2539
Tom.chisholm@kingsbridgecollege.org.uk

SEND/Learning Support Queries

SENDCo: Jane Blumer Ms Blumer 01548 852641 Ext. 2527
jane.blumer@kingsbridgecollege.org.uk

Finance/Catering Queries

Finance: 01548 852641 Ext. 1215
finance@educationsouthwest.org.uk

IT Support or Enquiries

IT Services: 01548 852641 Option 9
itsupport@educationsouthwest.org.uk

Successful **C**onsiderate **H**ard-working **O**ur best selves **L**eaders **A**spirational **R**esilient