

SHERDLEY PRIMARY SCHOOL

# NEWSLETTER



## A note from Mr Gawne ...

It has been another busy week in school this week and I must start by commending our Year 4 and Year 1 children who have been tackling some special jobs in School with the start of the Phonics Screening Check and the Year 4 Multiplication Check. A huge well done to all of the children who have demonstrated our value of Resilience and for rising to the challenge! Thanks to our staff as well who have ensured the children were so well prepared.

This week also saw the whole school head out on our 'Brake Walk' to raise speed awareness amongst the local community. It was a great event and again, a big thank you to our school families for supporting the walk organised by Mrs Lakey. We were pleased to be joined by the local police too who came and supported the cause. In Year 6, the children took on the role of scientists and participated in a dissection workshop linked to their Science learning. Not one for the faint hearted!

As a final note, it was lovely to meet some of you at the coffee afternoon this week and I hope to be able to meet some more of you on Tuesday morning for the next one.

**Best wishes, Mr Gawne.**

Attendance Year to Date:

**94.9%**

Our Attendance HERO's last week:

**Class**

**2S**

**99.14%**

*Here, Everyday,  
Ready, On time*

# Colour Run 2025



I am delighted to share that so far we have raised:



Playground Fundraising  
£ 25,000 GBP



## Sports Days

<b>Pre-School am</b>	Thurs 26th June	9:30am start
<b>Pre-School pm</b>	Thurs 26th June	1:00pm start
<b>Reception</b>	Wed 25th June	1:30pm start
<b>KS1 (Y1 &amp; 2)</b>	Tues 24th June	1:30pm start
<b>LKS2 (Y3 &amp; 4)</b>	Fri 27th June	9:30am start
<b>UKS2 (Y5 &amp; 6)</b>	Mon 23rd June	1:30pm start



**Sports Days at Sherdley are focused on demonstrating respect towards each other, inclusivity, fun and coming together in sport rather than high competition.**

**All children participate in their houses – in some year groups, houses look like they have less pupils in, however across the school this is broadly the same.**

**All children contribute points from their activities across 4 days of activities. These are then totalled for an overall House winner for the entire school.**



## BRAKE WALK

Each year, we participate in the annual BRAKE WALK. This is to raise awareness of being safe when out walking as well as encouraging motorists to slow down. 20 is plenty!!

We were supported by Merseyside Police and over 60 Parents and Carers. Thank you for helping us to deliver this message to road users and developing our children's awareness of road safety.



# GOOD LUCK JOSH!



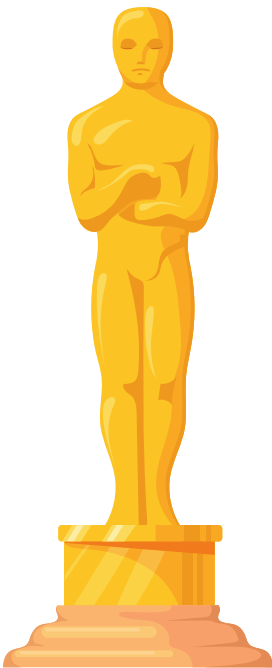
Hi, I'm Josh. 10 years of age walking 20 miles in just 1 day! I love all sports and I'm raising funds to help my school upgrade their PE equipment, please help!

On Friday, KS2 completed a 'warm up' with Josh in preparation for his big run. We can't wait to hear about the run on Monday. Give him a toot, toot, if you see him!



<https://gofund.me/3de3f242>

## The Sherdley Oscars



Staff in school have been very busy nominating children for this year's award ceremony. Soon we will share if your child was nominated. The nominations are then shortlisted and winners of each category are invited to attend the ceremony on 3<sup>rd</sup> July. This is a truly special evening in our school calendar, in memory of a little boy Oscar Scott who sadly passed away when he was in our Pre-school. The annual event is in memory of Oscar.

### Categories

- |                             |                   |
|-----------------------------|-------------------|
| You've got a friend in me   | Picasso Oscar     |
| Broadway Oscar              | Resillience Oscar |
| Following the script        | Best Director     |
| Sports and Well-being Oscar | Pythagoras Oscar  |
| Eureka Oscar                | Bookworm Oscar    |

The Oscar Jack Lawrence Scott – Greatest Showman

# SHERDLEY FEST!

**Save the Date:  
Friday 20<sup>th</sup> June am**

Each class will perform a song or musical performance linked to their music curriculum. The event will be hosted outside and will therefore be weather dependant.  
Information to follow.



## KS2 hall

9:30am – Rocksteady invitation only

## Key Stage 2 playground

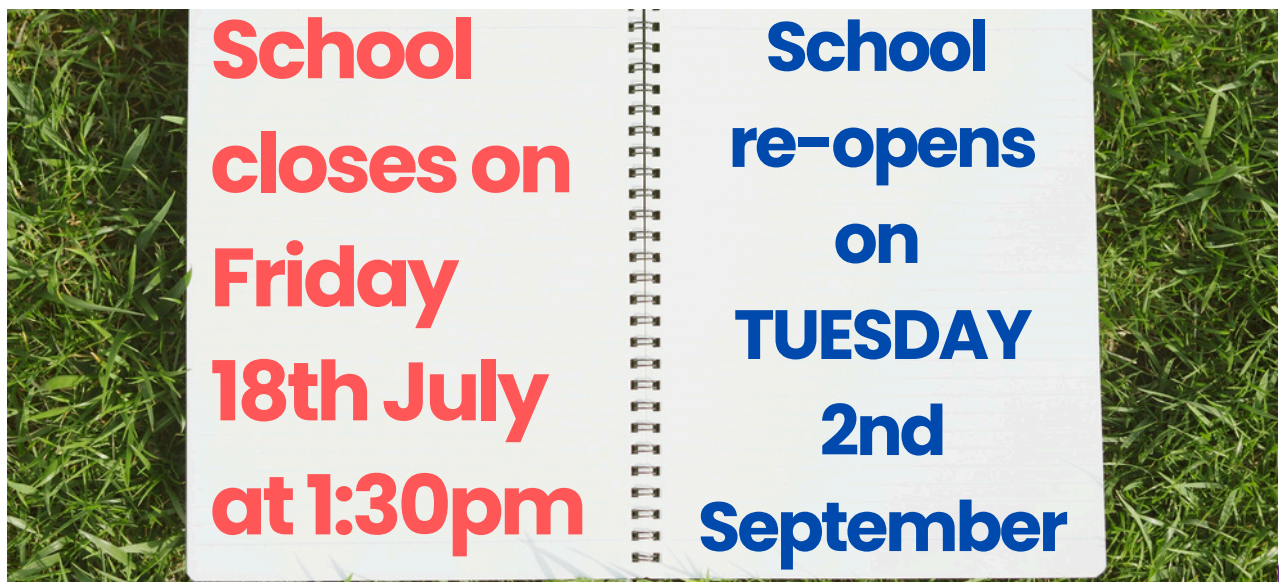
10:15am – Y3/4/5/6

1:30 – Preschool/reception/Y1/2

If you would like to bring your own 'festival gear' ie. Camping chair, drinks, snacks etc, we would love to have you join us on the key stage 2 playground. Entrance will be through the side gate by the Year 6 classrooms, by the green container behind the car park. Gates will be unlocked for parents and family members to enter before the start time of each performance, and then locked due to safeguarding protocol for the duration of the performance. Should you need it, an adult toilet can be accessed via the main office. Classroom doors will not be open for parents to enter.

## Dates for your Diary

- 17<sup>th</sup> June – Coffee morning with Mr Gawne  
20<sup>th</sup> June Sherdley Fest – Music concert – all classes to perform  
23<sup>rd</sup> June – Sports Days Week  
23<sup>rd</sup> June – Demonstrating Respect Week  
27<sup>th</sup> June – Wear Purple in support of – Logan Year 1  
2–4<sup>th</sup> July – 3 day transition week – move up to the next class.  
3<sup>rd</sup> July – The Oscars – invitation only  
9<sup>th</sup> July – Reports home  
17th July – Y6 leavers assembly doors open 9:15, start 9:30am –  
max 2 people per family  
18<sup>th</sup> July – School closes for Summer at 1:30pm – No Blast



# Sherdley Shares

St Helens has a diverse range of wildlife in its open spaces and parks. With over 952 hectares of parks and recreation space, it is home to a variety of species.

Biodiversity, the variety of all life on Earth, provides us with essential benefits.

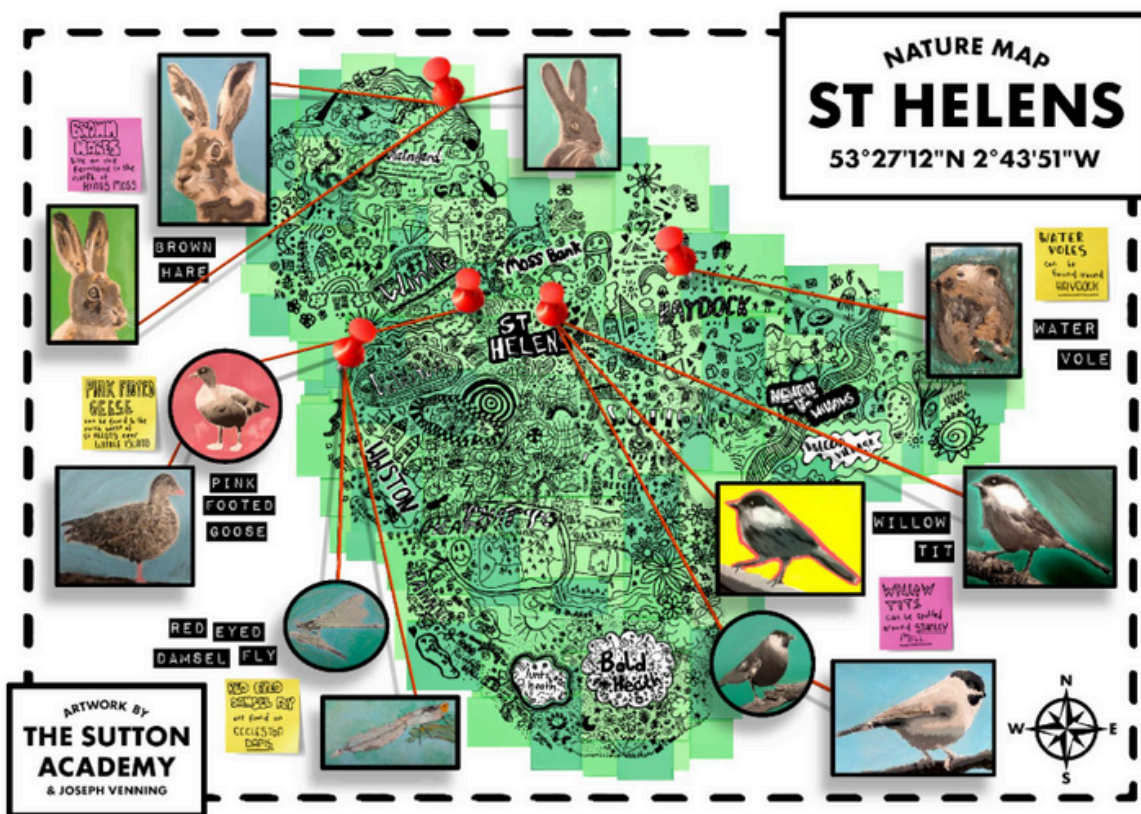
Biodiversity is crucial for our survival, providing us with everything we need. However, species extinction is accelerating, with over 98% of all species that have ever lived now extinct. In the last 40 years, wildlife populations have decreased by 69%.

The UN have warned that the rate of climate change is also increasingly difficult for animals and plants to cope with, and extreme weather events are becoming more frequent. Keeping global temperature increases within 1.5 degrees above preindustrial levels is crucial to avoid further biodiversity losses. According to the IPCC report, if global temperatures rise by 1.5–2.5 degrees, approximately 20–30% of species could face extinction.

As part of the 2030hub's Climate Impact Week, St Helens Borough Council is pleased to launch a wildlife nature trail (w/c 2nd June) around the Borough to raise awareness about the impact of climate change on local wildlife. To find out more about the exciting week of events planned by the 2030hub, [click here](#).

Visit the following parks' notice boards to learn more about how climate change affects wildlife:

- Taylor Park
- Sankey Valley Park
- Sherdley Park
- Siding Lane Local Nature Reserve
- Clock Face Country Park





# Sherdley Shares



**ADDvanced Solutions Community Network** is an open access offer that supports the emotional health and wellbeing of neurodivergent children and young people, their families and the professionals that work with them. Below you will find the learning programmes and workshops for St Helens families. No diagnosis or referral is needed to access the offer.

**Learning Programmes**  
page 3 & 4

Find out more

**Community Network Groups**

See below

**Online Learning Opportunities**  
page 2

Find out more

**St Helens Community Network Group: Every Tuesday afternoon during term time**

An informal, open access learning opportunity to seek advice and support around challenges at all stages of your journey. No need to book, just come along, to meet the team and visiting professionals.

**Time: 12:30pm - 2:30pm**  
**Venue: Wonderland Community Centre**  
Unit 4 Reflection Court, Canal Street. WA10 3JQ.

The community centre is a 10 minute walk from St Helens Central train station and St Helens bus station. It is located opposite the Chapel House car showroom.

[Get directions](#)



**Topics this half term:**

Tuesday 3 <sup>rd</sup> June	Managing Stress
Tuesday 10 <sup>th</sup> June	Supporting Transition
Tuesday 17 <sup>th</sup> June	SEND Jargon Buster
Tuesday 24 <sup>th</sup> June	in partnership with Signs of a Rainbow
Tuesday 1 <sup>st</sup> July	Sensory Processing Difficulties
Tuesday 8 <sup>th</sup> July	Preparing for the Summer Holidays

**ST HELENS ARMED FORCES DAY**

**FREE EVENT**

Live music,  
Military parade, displays,  
and much more!

SATURDAY 21 JUNE  
11am - 4pm (PARADE: 12 NOON)  
VICTORIA PARK,  
ST HELENS, WA10 2UB