

Past Papers and Mark Schemes

Revision ⌚ POWER HOUR



STEP
01

Choose a past
paper question

Google your subject,
level and exam board
e.g. "Geography A-Level
Past Papers AQA"

Revise
Spend 20 minutes
revising what you need
to know to answer your
chosen question



STEP
02

STEP
03

Do the question

Set a timer for 20
minutes and answer the
past paper question you
chose



STEP
04

Mark your answer

Using the mark scheme
for the past paper mark
your answer. This will
help you to think like an
examiner



STEP
05

Get feedback

Show your teacher your
work. Ask them whether
your marking is accurate
and how you could
improve your answers



Make sure that you are using the correct exam board:

Subject	Exam Board
GCSE English	AQA
GCSE English	AQA
GCSE Maths	Edexcel
GCSE Science	AQA
GCSE History	Edexcel
GCSE Geography	AQA
GCSE Spanish	AQA
GCSE French	AQA
GCSE PE	AQA
GCSE Food	AQA
GCSE Music	AQA
GCSE Computer Science	AQA
GCSE Technology	Edexcel

Science past papers and mark schemes

- Log onto the science website
- <https://www.aqa.org.uk/subjects/science/gcse/combined-science-trilogy-8464/assessment-resources?f.Resource+type%7C6=Mark+schemes&f.Sub-category%7CF=Sample+papers+and+mark+schemes>

Biology Paper 1 June 2018
q2 – 11 marks

0 2

Coronary heart disease (CHD) is a non-communicable disease.

CHD is caused when fatty material builds up in the coronary arteries.

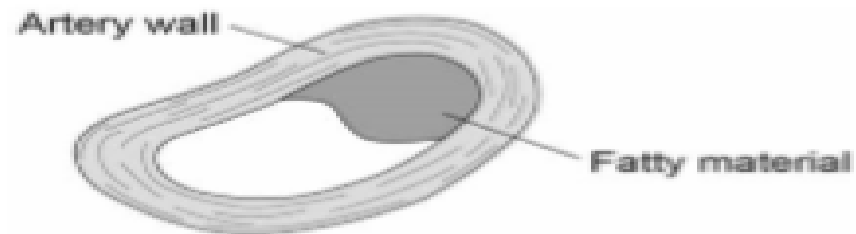
0 2 . 1

Explain what a non-communicable disease is.

[2 marks]

Figure 4 shows a coronary artery of someone with CHD.

Figure 4



0 2 . 2

Explain how CHD can cause a heart attack.

[3 marks]



Question	Answers	Extra information	Mark	AO / Spec. Ref.
02.1	is not caused by a pathogen / infective organism	allow not caused by a microorganism / microbe ignore not caused by infection ignore named pathogen unless bacteria, virus and fungus all mentioned	1	AO1 4.2.2.4 4.2.2.5 4.3.1.1 4.3
	(so) is not passed / spread (from person to person)	allow cannot be spread / caught allow is not infectious / contagious	1	AO2 4.2.2.4 4.2.2.5 4.3.1.1 4.3
02.2	reduced / restricted / stopped blood flow	allow 'it' for heart it does not matter where blood flow is restricted to – heart / body	1	AO1 4.2.2.4
	(so) less oxygen reaches heart (muscle / cells)	must reference heart / it allow no oxygen reaches the heart (muscle / cells)	1	
	(so heart muscle / cells) cannot respire (enough) or (so heart muscle / cells) do not release (enough) energy	do not accept do not make / produce / create energy ignore references to breathing / suffocation ignore blood clots / blockages	1	

0 2 3

Explain how lifestyle and medical risk factors increase the chance of developing CHD.
[6 marks]

Do not write
outside the
box



Question	Answers	Mark
02.3	Level 3: Relevant points (factors / effects) are identified, given in detail and logically linked to form a clear account.	5–6
	Level 2: Relevant points (factors / effects) are identified and there are attempts at logical linking. The resulting account is not fully clear.	3–4
	Level 1: Points are identified and stated simply, but their relevance is not clear and there is no attempt at logical linking.	1–2
	No relevant content	0



medical risk factors:

- high blood pressure
- high cholesterol
- diabetes
- genetic factors
- medications

lifestyle risk factors:

- smoking
- obesity
- lack of exercise
- high fat / energy diet
- eating insufficient fruit / vegetables
- alcohol
- high salt intake
- exposure to air pollution
- certain drugs / correct named drug

examples of links:

- smoking – high bp / cholesterol / fatty deposition
- obesity – lack of exercise / high bp / cholesterol / fatty deposition / diabetes
- exercise – obesity / bp / diabetes
- diet – obesity / cholesterol / diabetes
- alcohol – bp / cholesterol
- high salt intake - high blood pressure
- genetic factors – bp / cholesterol / diabetes / obesity
- medication – can affect blood / blood vessels / metabolism

the main discriminator is the quality of linking
both lifestyle and medical factors are required for level 3

Now seek other exam boards

