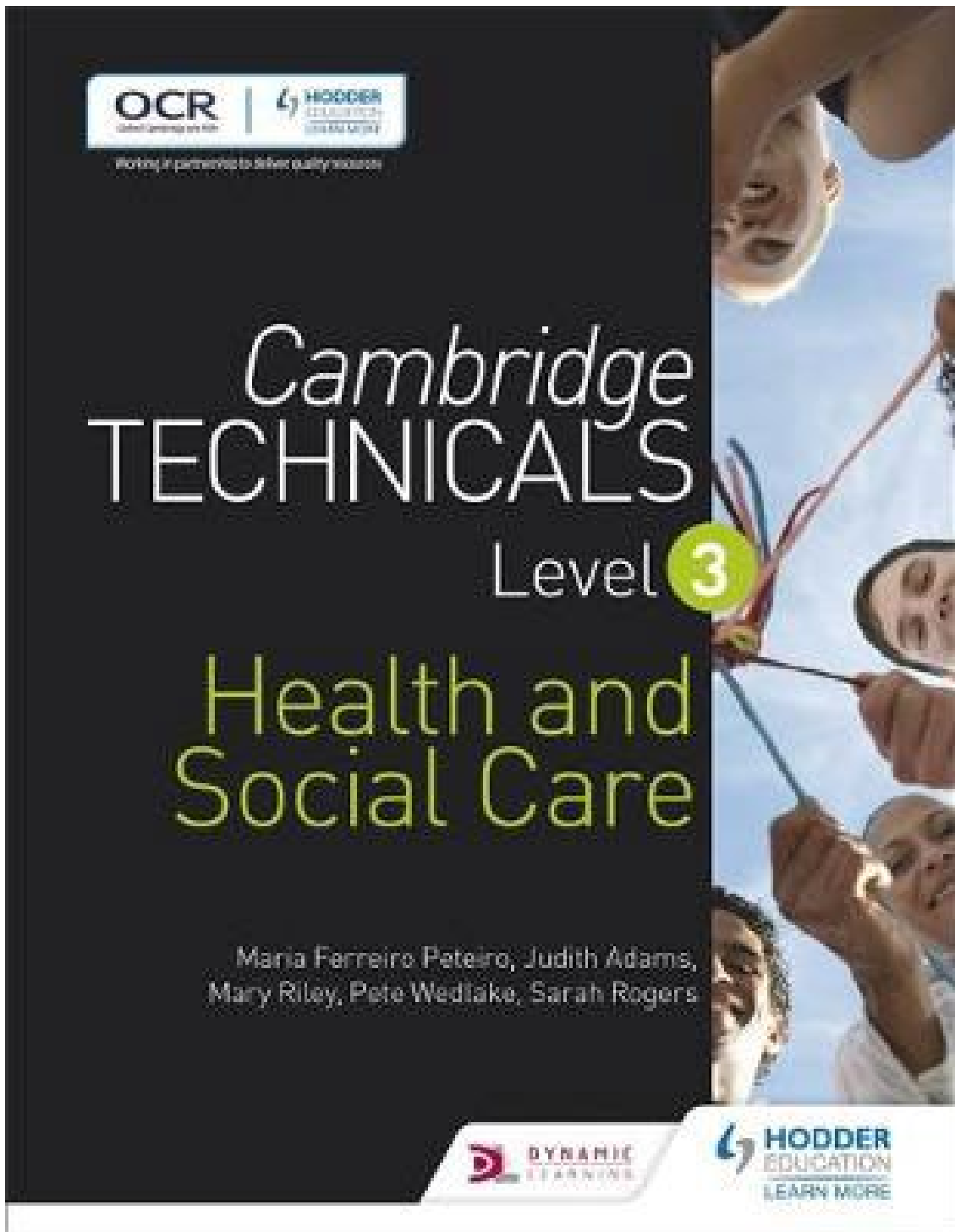


Level 3 CTEC Extended Certificate Health and Social Care



Passport to Sixth Form

Name: _____

Contents

What will I be studying?

Key word Glossary

Care Certificate

Malfunctions of the Body

Recommended Netflix Programmes

Other recommended watching

Recommended Reading



YEAR 12- Extended Certificate What will I be studying?

This course allows you an insight in the many roles available within health and social care from nurses to social workers to child care assistants and beyond they have many key features that we shall explore and apply. You will be studying a range of units which will help you to gain skills that will be valuable in your chosen profession or future study. You will learn about the human body and mind alongside the changes across time. You will learn what it means to work in the sector and what skills and behaviours you will need to develop. We will study the following units; although the final one is subject to change and you may not study them in this order.

UNIT 1: Building positive relationships in health and social care will focus on:

- Understanding relationships in health, social care or child care environments
- Understanding the factors that influence the building of relationships
- Understanding how a person-centred approach builds positive relationships in health, social care or child care environments
- Being able to use communication skills effectively to build positive relationships in a health, social care or child care environment
- **How you will be assessed: this a coursework based unit which will be graded at Pass, Merit or Distinction. The tasks are designed to test your knowledge on types of relationships, the factors that affect this and the theories that explain this. You will undertake 2 practical communication activities which will be assessed.**

UNIT 2: Equality, diversity and rights in health and social care will focus on:

- Understanding concepts of equality, diversity and rights and how these are applied in the context of health, social care and child care environments.
- Understanding the impact of discriminatory practices on individuals in health, social care and child care environments .
- Understanding how current legislation and national initiatives promote anti-discriminatory practice in health, social care and child care environments
- Understanding how equality, diversity and rights in health, social care and child care environments are promoted.
- **How you will be assessed: this is a paper based exam, that lasts for 1 hour 30 minutes and is worth 60 marks.**

UNIT 3: Health, safety and security in health and social care will focus on:

- Understanding potential hazards in health, social care and child care environments
- Understanding how legislation, policies and procedures promote health, safety and security in health, social care and child care environments
- Understanding the roles and responsibilities involved in health, safety and security in health, social care and child care environments
- Know how to respond to incidents and emergencies in a health, social care or child care environment
- **How you will assessed: : this is a paper based exam, that lasts for 1 hour 30 minutes and is worth 60 marks.**

UNIT 10: Nutrition for health is a 30 credit unit which will finish up the year

and focusses on nutritional health and the components of good nutrition. You will have the opportunity to scrutinise different foods, consider their health benefits and investigate how to support other people to impact their health and well-being.

How you will be assessed: this a coursework based unit which will be graded at Pass, Merit or Distinction. .You will develop a plan for an individual's diet.

Technical Diploma – Year 12

The same units as Extended Certificate – Unit 1, 2, 3 & 10

You will also complete:

Unit 5: Infection Control

- Understand infection control in HSC
- Know the chain of infection
- Be able to control the spread of infection
- Understand the role of the HSC worker in controlling infection
- **How you will be assessed: this a coursework based unit which will be graded at Pass, Merit or Distinction. Demonstrating your understanding including a presentation.**

Unit 14: The impact of long-term physiological conditions

- Know what long-term physiological conditions are; their causes & symptoms
- Understand effects of long-term physiological conditions
- Be able to support individuals with long-term physiological conditions to plan their care and support
- Know about end of life care
- **How you will be assessed: this a coursework based unit which will be graded at Pass, Merit or Distinction.**

Unit 7: Safeguarding

- Understand signs of abuse
- Understand factors which may lead to abusive situations
- Understand legislation, regulatory requirements & guidance that govern the safeguarding of adults, young people and children
- Understand how to deal with suspected abuse
- Understand working strategies & procedures for the safeguarding & protection of adults, young people & children
- Understand how workers within HSC & child care environments can minimise the risk of abuse
- **How you will be assessed: this is a paper based exam, that lasts for 1 hour 30 minutes and is worth 60 marks.**

What will I study in Year 13?

UNIT 4: Anatomy and physiology for health and social care focussing on:

- Understanding the cardiovascular system, malfunctions and their impact on individuals
- Understanding the respiratory system, malfunctions and their impact on individuals
- Understanding the digestive system, malfunctions and their impact on individuals
- Understanding the musculoskeletal system, malfunctions and their impact on individuals
- Understanding the control and regulatory systems, malfunctions and their impact on individuals
- Understanding the sensory systems, malfunctions and their impact on individuals
- **How you will be assessed: this is a paper based exam, lasting 2 hours .All questions are mandatory with no optional questions.**
- **YOU WILL REQUIRE A COMPREHENSIVE SCIENTIFIC KNOWLEDGE IN THIS UNIT.**

• **UNIT 13: Sexual health, reproduction and early development stages, focussing on**

- Understanding sexual health and contraception
- Understanding the importance of pre-natal health and the process of conception
- Knowing the factors which could affect health in pregnancy and the success of the birth
- Understanding the stages of pregnancy and birth and the post-natal care of the mother
- Understanding the care and development of the baby in the first year of life
- **How you will be assessed: this a coursework based unit which will be graded at Pass, Merit or Distinction.**

Technical Diploma – Year 13

The same units as Extended Certificate – Unit 4 & 13

You will also complete:

Unit 6: Personalisation & person centred approach to care

- Understand personalisation in HSC
- Understand what is meant by a person-centred approach to care
- Understand methods used to implement a person centred approach
- Know how to plan & conduct review meetings using a person-centred approach
- **How you will be assessed: this is a paper based exam, that lasts for 1 hour 30 minutes and is worth 60 marks.**

Unit 8: Creativity & activity for children & young people

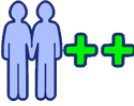
- Understand the importance of creativity for children & young people
- Understand how creativity develops in children & young people
- Understand the role of adults in promoting creativity for children & young adults
- Be able to design & plan an activity/creative activity for use with a group of children or young people
- Be able to deliver & evaluate an activity/creative activity to a group of children or young people
- **How you will be assessed: this a coursework based unit which will be graded at Pass, Merit or Distinction.**

Unit 15: Promoting health & wellbeing

- Understand reasons for maintaining a healthy lifestyle
- Understand the use of strategies & campaigns and the roles of professionals in promoting health & wellbeing
- Understand factors that influence responses to the promotion of health & wellbeing
- Be able to implement & evaluate a campaign [promoting health & wellbeing]
- **How you will be assessed: this a coursework based unit which will be graded at Pass, Merit or Distinction.**

GLOSSARY

Task: Research and define the following words which are central to the Building a positive relationships unit and Equality & Diversity Unit. Then, draw a symbol to summarise the term and help you remember it.

Term	Definition	Symbol
Positive Relationship	Meaningful interactions that result in positive emotions such as happiness, enjoyment, peace and a sense of wellbeing. They are constructive and beneficial for all involved.	
Advocate		
Health care environment		
Social Care environment		
Child care environment		
Working in partnership		
Advocates		
Supervision		
Mentoring		
Psychologists		7

GLOSSARY

Term	Definition	Symbol
Psychiatrists		
Hospice		
Tone		
Pitch		
Body language		
Race		
Religion		
Diversity		
Kosher		
Shabbat		



GLOSSARY

Term	Definition	Symbol
LGBTQ+		
Pride		
Beliefs		
Values		
Stereotypes		
Values of Care		
Discrimination		
Legislation		
Non judgemental		
Safeguarding		

Research task

Present your findings as a word document or poster – the choice is yours

- ✓ Write a brief explanation of the Care Certificate – what is it?
- ✓ Identify the 15 standards of the Care Certificate
- ✓ Identify the reasons why it was developed for health and social care workers

Useful links:

<https://www.hee.nhs.uk/our-work/care-certificate>



Unit 4 Anatomy and Physiology

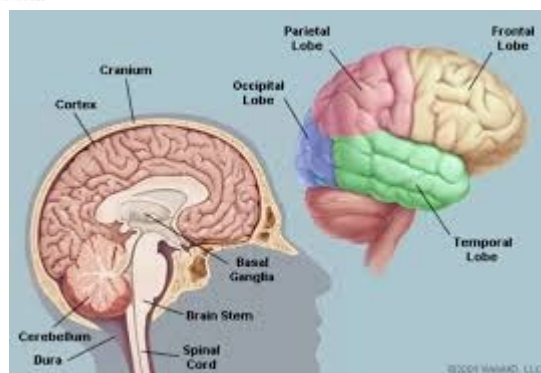
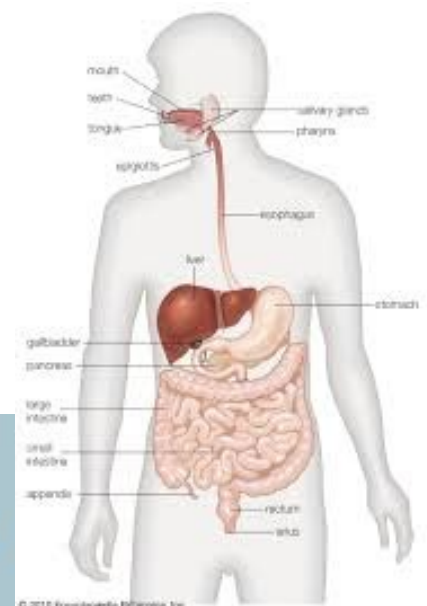
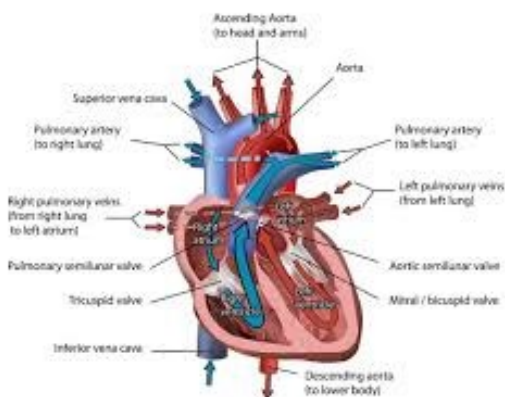
Sample Task:

The body comprise a range of organs and systems. Each of these has the potential to malfunction. Choose one of the following:

- The Heart
- The Brain
- The Digestive system

For the organ or system of your choice, please investigate the following, you can choose how to present the information.

- ✓ Choose one malfunction
- ✓ Describe the impact of the malfunction on the system
- ✓ Describe the typical effects on the individual experiencing the malfunction
- ✓ Describe the range of treatments which may be available to support them.



NETFLIX

Babies



Marriage Story



Louis Theroux: Extreme love, Dementia



Five Feet Apart



Brain on Fire



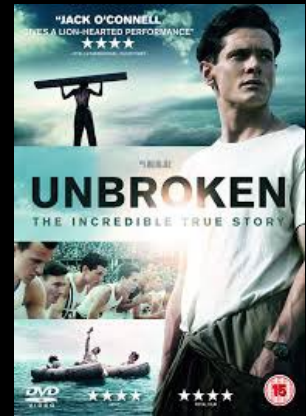
Theory of Everything



What to expect when you're expecting



Unbroken



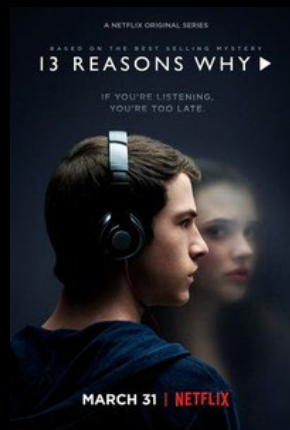
Girl, interrupted



Call the Midwife



13 Reasons Why



Pandemic: How to prevent an outbreak



Recommended Watching for Health and Social Care

Beyond NETFLIX

Elizabeth is Missing

Rio & Kate: Becoming
a Step family

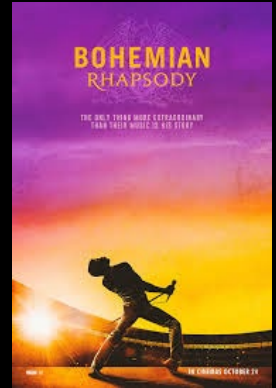
Jesy Nelson: Odd
one out

Bohemian Rhapsody

BBC iPlayer



DVD



Confessions of a
Junior Doctor

Born to be
different

Secret life of... Year
Olds

Still Alice

4 On Demand



DVD



The Children Act

The Upside

Beautiful Boy

Miss you Already

Amazon Prime





Beyond

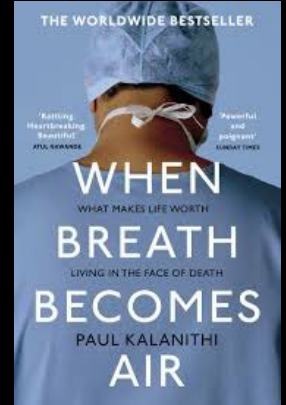
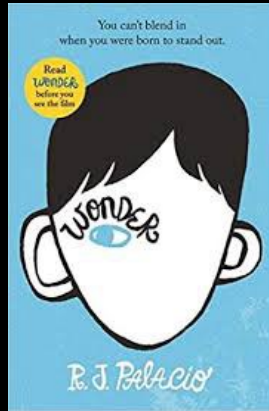
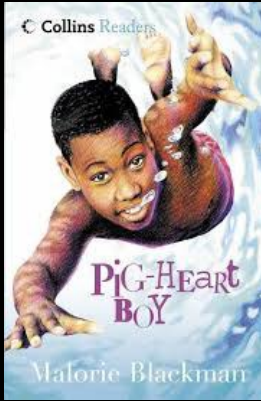
Pig Heart Boy by Malorie Blackman

Wonder by R.J. Palacio

This is Going to Hurt by Adam Kay

When Breathe becomes Air by Paul Kalanithi

Further Reading

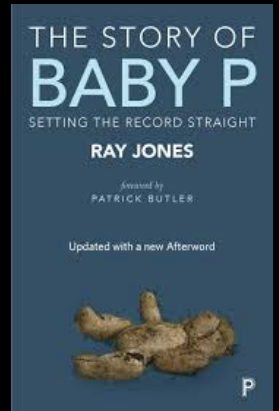
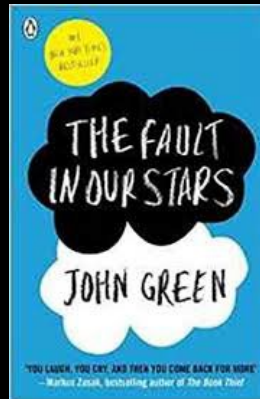
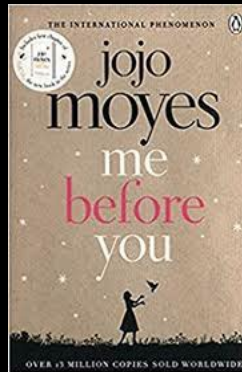


The Hate U Give by Angie Thomas

Me Before you by Jojo Moyes

The Fault in Our Stars by John Green

The Story of Baby P by Ray James

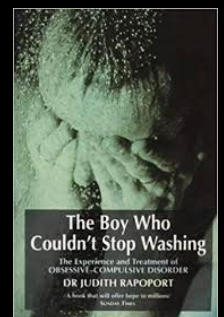
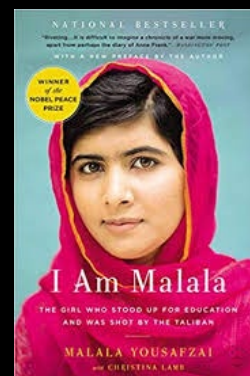
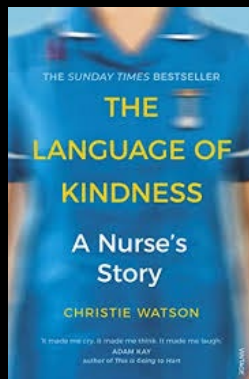
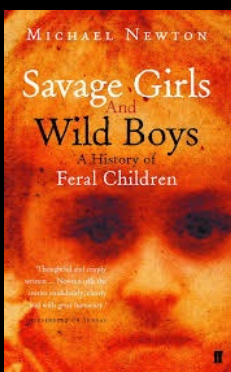


Savage Girls and Wild Boys by Michael Newton

The Language of Kindness by Christie Watson

I am Malala by Malala Yousafzai

The Boy Who Couldn't Stop Washing by Dr Judith Rapoport



Recommended Reading for Health and Social Care

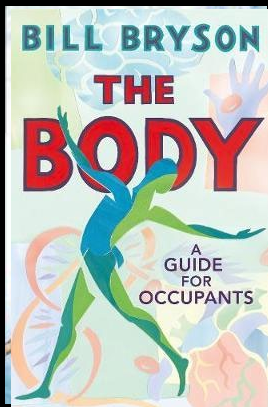
Yes some of these are also films, if you prefer!

Beyond

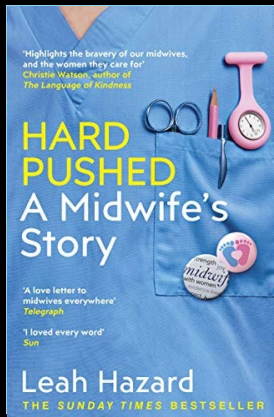


Further Reading

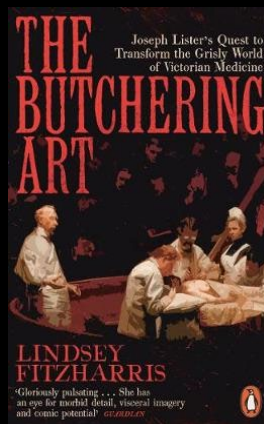
Bill Bryson- a guide for occupants



Hard Pushed- Leah Hazard



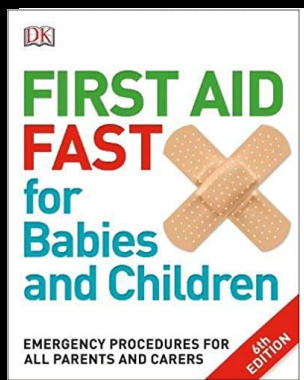
The Butchering Art- Lindsey Fitzharris



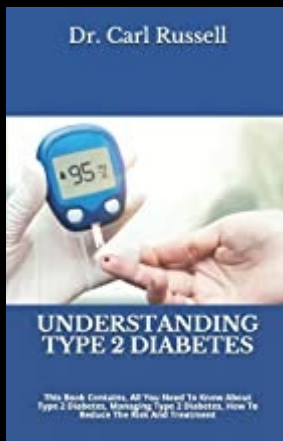
First Aid Made Easy- Nigel Barraclough



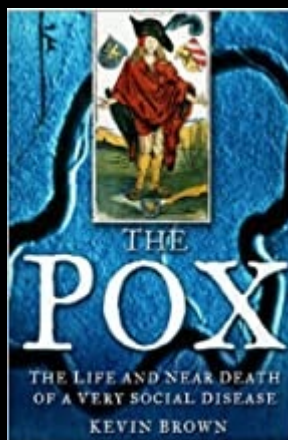
First Aid for babies and children



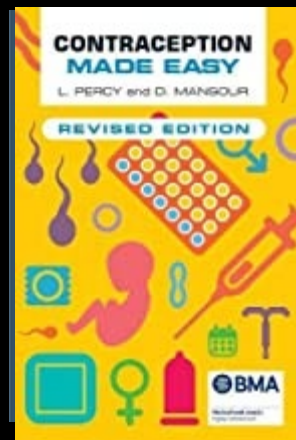
Understanding diabetes- Dr Carl Russell



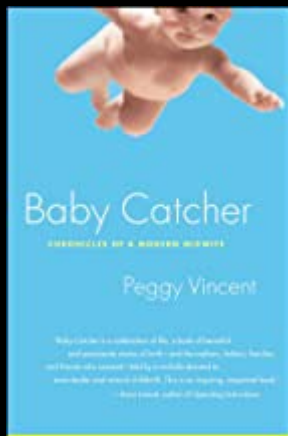
The Pox Kevin Brown



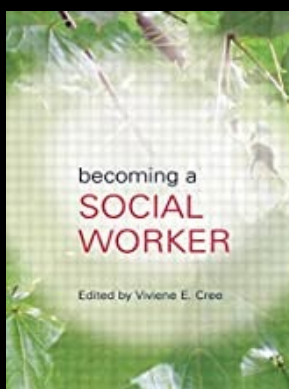
Contraception made easy Percy and Mansour



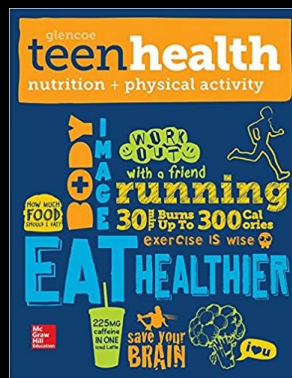
Baby Catcher- Peggy Vincent



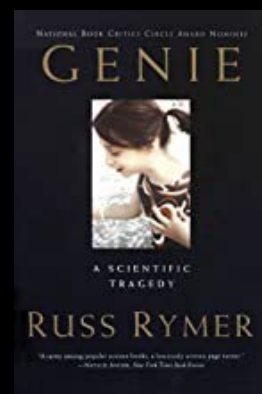
Becoming a Social worker- Vivienne Cree



Teen Health- McGraw Hill



Genie Russ Rymer



Recommended Reading for Health and Social Care

Yes some of these are also films, if you prefer!