

WHAT WILL I STUDY?

The BTEC Extended Certificate or Diploma is for learners who are interested in learning about the Performing Arts sector alongside other fields of study, with a view to progressing to a wide range of Higher Education courses.

The course has a mix of both practical and theory elements to further your knowledge of performing arts.

HOURS OF STUDY (FORTNIGHTLY)

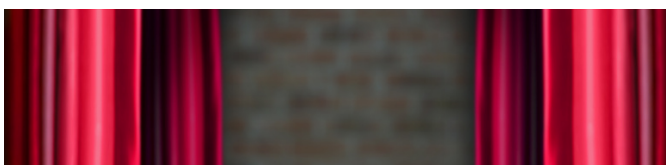
9 hours of lesson time
6 hours independent learning

SPECIALIST FACILITIES

Dance studio
Fully equipped theatre

RESOURCES NEEDED

Residential to London
Other local theatre trips and visiting professionals £200 per year
Options uniform from £20



CAREER OPPORTUNITIES

Students have gone onto study Drama, Musical Theatre and Dance at university level, attending courses in Plymouth, London and Exeter.

- Centre School of Speech and Drama - London
- Italia Conti – Britain's first Performing Arts Academy – London
- Doreen Brid College of Dance, Music & Theatre Performance – London
- Arts Ed – London
- Royal Academy of Dramatic Art (RADA) London
- Mount View – London Musical Theatre course.

Performing Arts can open many doors for your future, whether you want to teach, perform, train or direct.

ASSESSMENT

Year 1:

Unit 1: Investigating Practitioners Work: A 3 hour exam exploring the professional work of two practitioners.

Unit 2: Developing Skills and Techniques for Live Performance: A Christmas Pantomime performed in front of primary students and the public & a final Musical Theatre performance to a live audience.

Unit 3: Group Performance: Externally assessed unit devising a performance piece based on a stimulus.

Unit 28: Variety Performance: A show consisting of musical theatre songs and dances.

Year 2:

Unit 4: Performing Arts in the Community: A Christmas Pantomime performed in front of primary students and the public.

Unit 5 Individual Performance Commission: Externally assessed unit based on an 8 minutes solo performance devised from a stimulus.

Unit 6 Final Live Performance: A final Musical Theatre performance to a live audience.

Unit 27 Musical Theatre Techniques: A show consisting of musical theatre songs and dances.



ENTRY REQUIREMENTS

Five GCSEs, or equivalent, grade 4 or above are required for entry into Sixth Form to study Level 3 BTEC courses.

Grade 4 GCSE or above is required in your chosen, or related subject.