



BLEAN PRIMARY SCHOOL

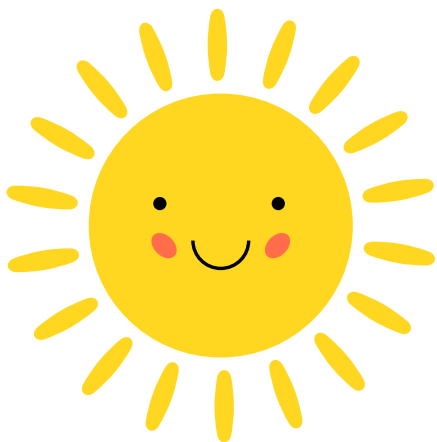


MESSAGE FROM MR ROWDEN & MISS SATTERLEY

We hope you had a restful and enjoyable half-term break. Although this week has been a 4-day week, it's been a busy one with cross country trials, swimming in year 3 and 11 trainee teachers seeing our wonderful practice.

Isn't it lovely to see the sun-shine and have lighter mornings and evenings?

We look forward to all the fun and excitement that term 4 will bring.



Tennis Competition

If you can play match level Tennis, we would like to enter some pairs into a Tennis Doubles Competition in May. Please let Miss Irons know if you would like to take part: email enquiries@blean.kent.sch.uk with your child's name, year group and coloured ball level (red, orange or green).

Lost Property

We have acquired quite a lot of unnamed, non-uniform lost property, such as coats, hats and lunchboxes. This will be available in the school lobby next week if you would like to have a look through to find anything you might be missing.

Attendance Winners

We are pleased to inform you that this week's attendance winners are...

Year 2
98.2%

We are pleased to inform you that this week's attendance House winners are...

Maple
96.7%

IN THIS ISSUE

Reminders

- World Book Day
- Hockey Club - Term 4
- Forest School - Term 4
- Cross Country

Super Fundraiser

Kent Music School

Food Band Locations

Dates for your Diary & Upcoming Events

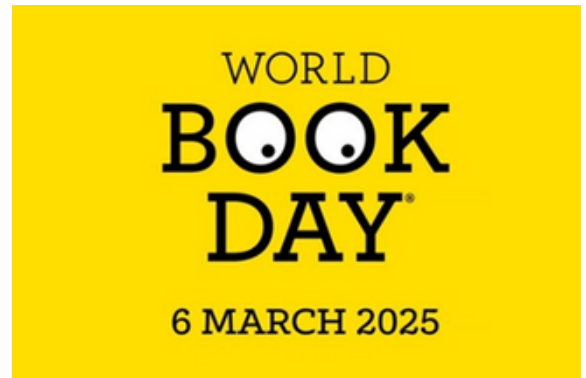


World Book Day

We are excited to soon be celebrating World Book Day. Our celebrations will be held on **Thursday 6th March**. The children and staff are invited to dress up, bringing their favourite book character or author to life.

On the day, assemblies will be held, along with buddy reading and a host of fun activities. Today, ahead of World Book Day, each child will receive a £1 book token and a free book.

We are having a special lunch menu on this day to celebrate, this can be viewed [here](#). There will be suitable alternatives for all allergens.



Hockey Club - Term 4

Please be aware that Hockey club for Term 4 will begin on **Friday 7th March 2025**.

There are still some spaces available for any girls in Years 4, 5 & 6 who wish to attend Hockey club. This club runs on Fridays, 3:25pm - 4:30pm. Please contact the school office if you would like to take part.

Forest School - Term 4

Please see the dates below for Forest School in Term 4 for KS1:

Jemison: 11.03.2025, 25.03.2025

Yassin: 04.03.2025, 18.03.2025, 01.04.2025

West: 12.03.2025, 26.03.2025

Imafidon: 06.03.2025, 20.03.2025, 03.04.2025

Peake: 12.03.2025, 26.03.2025

Singh: 05.03.2025, 19.03.2025, 02.04.2025

The children will be outdoors for each session, and must bring the following clothing to school:

Long sleeved top, full length trousers, wellies/sturdy shoes or boots.

Other recommended items: Waterproofs. Gloves, hat, scarf and warm clothing for colder weather. (Please write child's name in all clothing)

It is expected that Forest School will be very muddy, therefore they bring spare coats, shoes and a bag to put muddy items in for each session.

If your child is in EYFS or Year 1, they should come to school wearing their forest school clothes and bring their school uniform to change into. Please leave their boots/wellies outside the classroom.



REMINDERS

Cross Country

Kent College JUNIOR school will be running Cross Country events again for all year groups and younger siblings.

The dates are as follows:

Friday 14th March - Registration at 4pm

Please arrive early as parking can be very difficult. Sign in, then meet Miss Irons under the tree near the sign-in tables. I look forward to seeing my regular runners and some new faces. It would be great to have more runners! Miss Irons.



Super Fundraiser

We wanted to share that on Saturday, Nate from Reception, walked 5km around Blean Woods to raise money for WWF (World Wide Fund for Nature). His passion for protecting the planet and nature truly shines through in this effort. He raised an incredible £400 for the charity—what a fantastic achievement! We are so very proud of you!



Kent Music School

We would like to inform you that the Kent Music Summer School at Benenden is back this July. KMSS courses are exciting and engaging. They offer the opportunity to build on a love for music while expanding social and musical horizons. For more information please take a look at the brochure [here](#).





Food Bank Locations

Please see below information about where and when families can access free food if needed. The Canterbury Food Bank provides emergency dry food, but there are several other organisations in the district that provide fresh food, including fruit and vegetables. More information can be found [here](#).

Food Banks United – Canterbury District

Monday
Maya's Community Support Centre (Herne Bay) – Dry Food Bank – 2-3pm – 20 High Street CT6 5LH Maya's Community Support Centre (Herne Bay) – Fresh Food Bank – 9pm – 20 High Street CT6 5LH
Tuesday
Northgate (Canterbury) Community Food Larder – Emergency Food Parcel / warm space / hot soup – 10am – 1pm – Military Road, Canterbury, CT1 1YX Christchurch (Herne Bay) – Food Larder – 10 am – 12.00 pm – Christchurch, William Street, CT6 5AG Salvation Army (Herne Bay) – Drop in / Pasta Lunch – 10 am – 2pm 33 Richmond Street CT6 5RH Salvation Army Annex Drop-In (Canterbury) – Emergency Food Parcel / warm space / hot drinks & toast – 10 am – 2pm Whitehorse Lane CT1 2RU Maya's Community Support Centre (Herne Bay) – Fresh Food Bank – 9pm – 20 High Street CT6 5LH
Wednesday
Salvation Army (Herne Bay) – Cancer Cafe – 10 am – 12.30 pm 33 Richmond Street CT6 5RH Maya's Community Support Centre (Herne Bay) – Fresh Food Bank – 9pm – 20 High Street CT6 5LH
Thursday
The Hub – Community Fridge – 11am – 12.15pm – Canterbury Baptist Church – CT1 1UT Salvation Army (Herne Bay) – Drop in Free Toast / Lunch – 10 am – 2pm 33 Richmond Street CT6 5RH Maya's Community Support Centre (Herne Bay) – Dry Food Bank – 2-3pm – 20 High Street CT6 5LH Maya's Community Support Centre (Herne Bay) – Fresh Food Bank – 9pm – 20 High Street CT6 5LH

Friday
All Saints (Canterbury) – Food Larder – 9am (breakfast) & 10 – 12pm – Military Road, CT1 1PA Salvation Army Annex Drop-In (Canterbury) – Emergency Food Parcel / warm space / hot drinks & toast – 10 am – 2pm Whitehorse Lane CT1 2RU Canterbury Baptist Church – Community Cafe – 11-1pm – Canterbury Baptist Church – CT1 1UT Maya's Community Support Centre (Herne Bay) – Fresh Food Bank – 9pm – 20 High Street CT6 5LH
Saturday
Maya's Community Support Centre (Herne Bay) – Fresh Food Bank – 9pm – 20 High Street CT6 5LH
Sunday
Maya's Community Support Centre (Canterbury) – Fresh Food Bank – 6pm – 49 Northgate CT1 2BE Maya's Community Support Centre (Herne Bay) – Fresh Food Bank – 9pm – 20 High Street CT6 5LH
Monday – Friday
 <p>Canterbury Food Bank - Emergency food parcels. Available to residents of Canterbury, Herne Bay, Whitstable and the surrounding villages. Call 01227936450 9am-2pm or WhatsApp us on 01227901944</p> <p>For more information on the above sources of free food in the Canterbury District and a list of sources of reduced price food please visit www.mayas.org.uk/sourcesoffood or click the QR code to the left.</p>



DATES FOR YOUR DIARY

For term dates please [click here](#).

Term 4	26.02.2025 - 14.04.2025	Inset Days 2024/25
World Book Day	06.03.2025	21.07.2025
Year 3 Swimming	07.03.2025	22.07.2025
Braiswick School Photos	13.03.2025	
Braiswick School Photos	14.03.2025	
Year 3 Parent Share	21.03.2025	
Year 6 Walk for Water	21.03.2025	
		Forest School Dates
		Jemison: 11.03.2025, 25.03.2025
		Yassin: 04.03.2025, 18.03.2025, 01.04.2025
		Peake: 12.03.2025, 26.03.2025
		Singh: 05.03.2025, 19.03.2025, 02.04.2025
		West: 12.03.2025, 26.03.2025
		Imafidon: 06.03.2025, 20.03.2025, 03.04.2025