



Parent meeting  
Wednesday 4th September, 2024.



# Our School Values

Be Kind.

Be Brilliant.

Have an **I can** attitude.



**I can** show pride in everything I do.



**I can** be polite and show respect to others.



**I can** be a good listener.



# Staffing



Whilst Mrs Woolcock, Mr Burton and Miss Jackson will be ultimately responsible for their own classes, this is a Year 5 and 6 phase team and subsequently there may be times where your child may be taught by another member of the team.

Miss Milner and Mrs Taylor will be working across the classes focusing on closing gaps in knowledge through specific interventions.

# Communication

---



weduc

Messages may be sent to your child's class teacher via WEDUC. The office staff operate with discretion and confidentiality and will pass messages to the appropriate teaching staff.

If you wish to arrange a meeting with a class teacher, please message on WEDUC or speak to the staff in the office.

Staff members will be on the doors at the start of the school day and dismissal.



## Parents evening

Parents evening will take place on Tuesday 15th October and Thursday 17th October. Further details will be sent nearer the time.

# The School Day

## Registration

Registration for all children takes place at **8:45 am**; however, our classroom doors open at **8:35 am** to allow time for our children to organise their belongings before morning work begins.

School Gates will be locked promptly at **8:45 am**. Children arriving after this time must be accompanied to the office where they sign in and record their lunch requirements for the day.

## Assemblies

Whole School assemblies take place at 10:15am every day and are taken by members from the teaching team. Our Oxley **#Starsoftheweek** celebration and **#sportspersonoftheweek** assembly is held on Fridays.

## Lunch times

- Penguins and Koalas 12:00pm – 12:30pm
- Sloths and Owls – 12:15pm – 12:45pm
- Key Stage 2 – 12:35pm – 1:15pm



Trim Trail:  
Tues, Fri – Yr 6  
Wed, Fri – Yr 5

Other activities throughout the week: badminton, tennis, golf, football & dodgeball.

There is also a quiet room and well-being club available.

# Snacks

Following government guidance on healthy eating and to meet our Healthy School's award, we are asking that children only bring an item from the list below for their morning snack and try to vary choices across the week:

- Whole or sliced fruit
- Vegetable sticks, e.g. celery, carrot, pepper, cucumber etc
- Bag of plain popcorn
- Meat ( i.e. Mini Peperami) / cheese snack
- Plain rice /corn cakes or Bread sticks



## Water bottles



- Please make sure that your child has a named water bottle in school everyday.
- Please do not send juice as water bottles have a habit of leaking.



**Gold Tokens**  
Showing an "I can" attitude in lessons and around school.



**Blue (Ocean) Tokens**  
Being Brilliant and Kind at lunchtimes.



**Green Tokens**  
Green Cards & exceptional effort and behaviour.

# Oxley Rewards

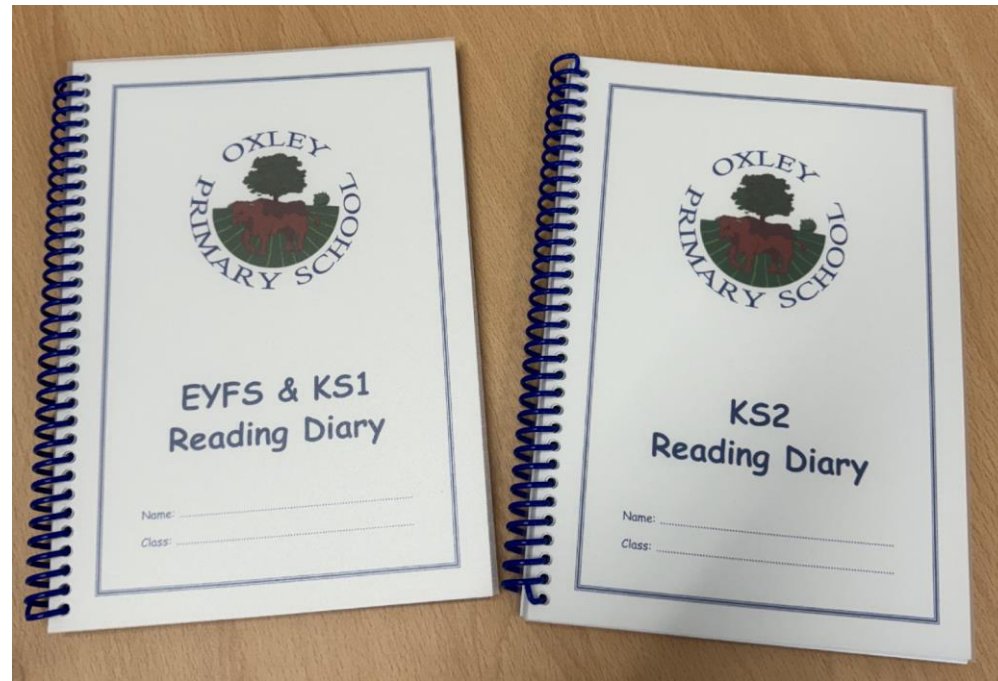


# Oxley's Houses

## Year 6 house captains

This year, the children will research local charities to support and decide collectively if they wish to combine efforts towards one as a school or one per house.





Our Oxley expectations are that our children read a minimum of three times a week. In year 5 & 6, the children are encouraged to their entries independently but we ask that you work with us by listening to them where possible and signing their books.



# Reading matters



# Typical Timetable

Autumn 1 2024/2025



	08:35-09:00	09:00-10:15	10:15-10:30	10:30-10:45	10:45-11:15	11:15-12:15	12:15-13:15	13:15-14:15	14:15-15:15	
Monday	Morning activities	PSHE/PE	Mr Caldwell	Break	PSHE/PE	GR	Lunch	English	Maths	
Tuesday		Spellings	English		Assembly rota	GR		Maths	Art	Computing
Wednesday		Spellings	English		Mrs Robe	French		Maths	Geography	Music
Thursday		English	Assembly Singing - LW		Reading	Maths		RE	PE	
Friday		English	Star of the week		Spelling Test	Arithmetic		Science		

## PE

- PE kits to be in school every Monday
- Children will typically take part in two PE lessons per week
- Kits will be sent home on a Friday to be checked/ washed.
- Please ensure all kit is labelled.

# English: Reading

Reading takes many forms: poetry, novels, fiction and non-fiction comprehensions, films, song lyrics and pictures.

The children learn a skill throughout the week and are given opportunities to apply this skill to different situations.

- V**ocabulary
- I**nfer
- P**redict
- E**xplain
- R**etrieve
- S**equence or Summarise

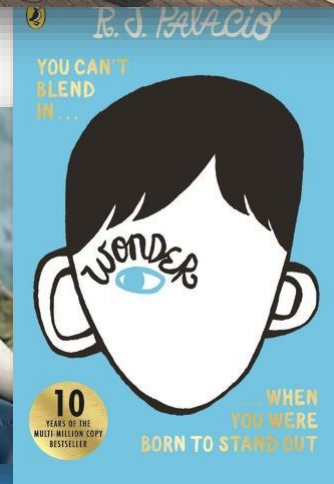
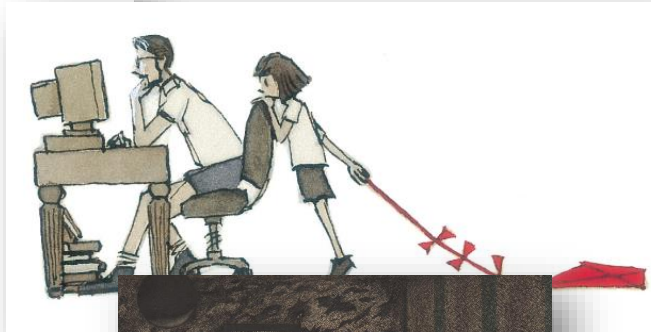
*I Wandered Lonely as a Cloud*  
By William Wordsworth

*I wandered lonely as a cloud  
That floats on high o'er vales and hills,  
When all at once I saw a crowd,  
A host, of golden daffodils;  
Beside the lake, beneath the trees,  
Fluttering and dancing in the breeze.*

*Continuous as the stars that shine  
And twinkle on the milky way,  
They stretched in never-ending line  
Along the margin of a bay:  
Ten thousand saw I at a glance,  
Tossing their heads in sprightly dance.*

*The waves beside them danced; but they  
Out-did the sparkling waves in glee:  
A poet could not but be gay,  
In such a jocund company:  
I gazed—and gazed—but little thought  
What wealth the show to me had brought:*

*'For oft, when on my couch I lie  
In vacant or in pensive mood,  
They flash upon that inward eye  
Which is the bliss of solitude;  
And their little friends with pleasure fill,*



## Modern Explorers

### Felicity Aston

Felicity Aston is an English explorer. Felicity explores the polar regions. The polar regions are the North and South Poles. The North Pole is at the very top of the Earth. The South Pole is at the very bottom. It is very cold in the polar regions.

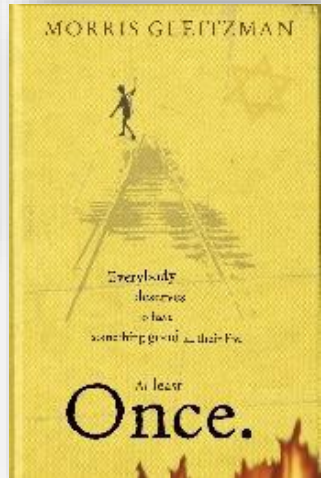
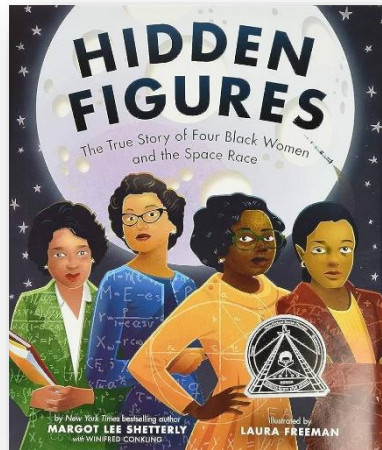
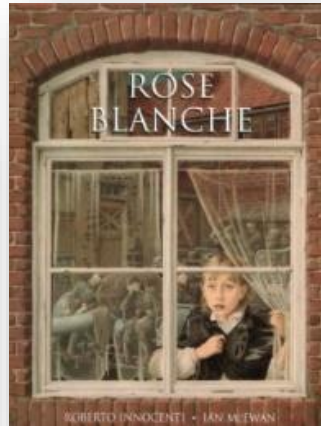
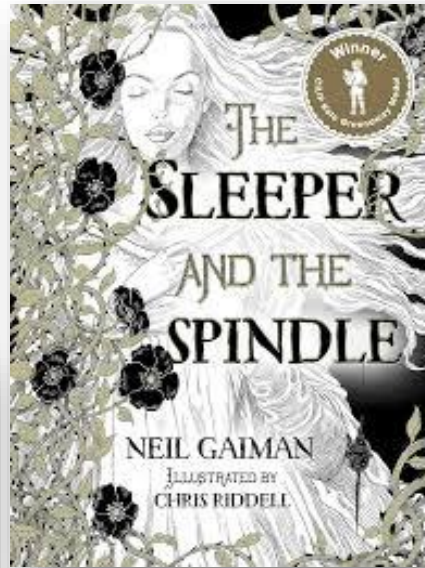
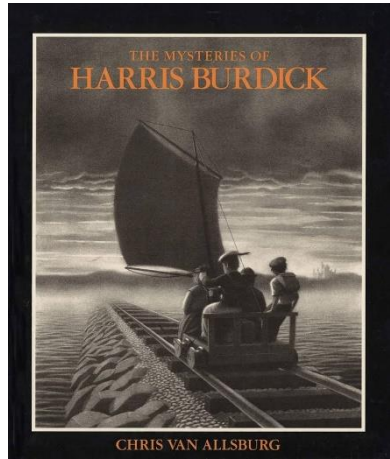
In 2012, Felicity skied across Antarctica. She was the first woman to do this alone. She was the first ever person to do it without power. She just used her muscles. It took Felicity 59 days. This was a world record!

### VIPERS QUESTIONS

- R** Which places are known as the polar regions?
- R** What is the weather like in the polar regions?



# English: Novel Study



Writing is taught through novels where we also combine skills of grammar and reading.

The children are taught various genres of fiction and non-fictional writing and are given more opportunities to develop their own style and independence.



# English: Grammar

Which word is a possessive pronoun?	Underline the relative clause.	Where could you include parenthesis? What could you use?
Which part is a fronted adverbial?	<b>Every night Barney would sneak out to visit his patients who desperately needed his help even though it was dangerous.</b>	Which is the main clause?
Where is there a comma missing?	How many clauses are there in this sentence?	Circle the modal verb.

Grammar is taught every day at the start of an English lesson.

There are also discrete lessons to focus on certain aspects.

There are only a few concepts specific to Year 6 therefore by drip feeding these to Year 5 throughout the year, they have more opportunities to consolidate learning in Year 6.

# Maths

$$4782 + 382 =$$

$$467\,902 - 65\,903 =$$

$$6.003 + 5.21 =$$

$$367 \times 55 =$$

$$4571 \div 35 =$$



	Week 1	Week 2	Week 3	Week 4	Week 5	Week 6	Week 7	Week 8	Week 9	Week 10	Week 11	Week 12
Autumn term	Number <b>Place value</b>  VIEW			Number <b>Addition and ...</b>  VIEW	Number <b>Multiplication and division A</b>  VIEW		Number <b>Fractions A</b>  VIEW				Number <b>Multiplication and division B</b>  VIEW	
Spring term	Number <b>Multiplication ...</b>  VIEW	Number <b>Fractions B</b>  VIEW		Number <b>Decimals A</b>  VIEW	Measurement <b>Area, perimeter and volume</b>  VIEW		Number <b>Decimals B</b>  VIEW				Number <b>Fractions, decimals and percentages</b>  VIEW	
Summer term	<b>Ratio</b>  VIEW	<b>Algebra</b>  VIEW	Geometry <b>Shape</b>  VIEW		Geometry <b>Position and direction</b>  VIEW		<b>Statistics</b>  VIEW			Measurement <b>Converting units</b>  VIEW		

Maths is taught every day.

Lessons are adapted to meet the needs of Year 5 and 6 by working on the same objective but having various levels of challenge.

Like grammar, some year 6 concepts may be introduced to Year 5 with careful consideration given so as not to confuse or create cognitive overload.

# Foundation subjects



Subject	Autumn 1		Autumn 2		Spring 1	Spring 2		Summer 1		Summer 2		
<b>Science</b>	Forces	Space	Global warming	Properties of materials	Animals including humans	Life Cycles	Plant reproduction	Reversible & irreversible changes	Plastic pollution	Plant reproduction		
<b>History</b>	What was WW2 and how did it affect children?					Why did Britain once rule the largest empire the world has ever seen?						
<b>Geography</b>	Sustainability: What is fair trade?					Habitat: Who are Britain's National Parks for?						
<b>PHSE</b>	Diversity and Communities		Anti-Bullying		Financial Capability	Drug Education		Healthy Lifestyles		Relationships and Sex Education		
<b>Music</b>	Technology, structure and Form Garage Band						Pitch					
	Voice			Rhythm								
<b>RE</b>	Creation and science: conflicting or complementary?		How do Christians decide how to live? What would Jesus do?		Why do Hindus want to be good?		What matters most to humanists and Christians?					
<b>Art</b>	Typography & Maps		Activism		Mixed media land and cityscapes		Architecture and Frame structures: withstanding monsoons					
<b>Design &amp; Technology</b>	Security and Games		Tablet and Phone cases		Smoothies and Soups							
<b>Computing</b>	Programming A			Programming B: (Micro: bits)			3D Modelling					
<b>PE</b>	Tag Rugby		Swimming		OAA	Basketball		Dance		Athletics		
	Fitness/Team building			Hockey			Tennis					

We learn through a variety of exciting projects and topic-based themes on a two-year cycle.

Throughout the subjects, we have tailored our curriculum to allow for creativity and ownership.

End-of-unit assessments may take various forms; essays, posters, stop-motion animations, presentations or quizzes.

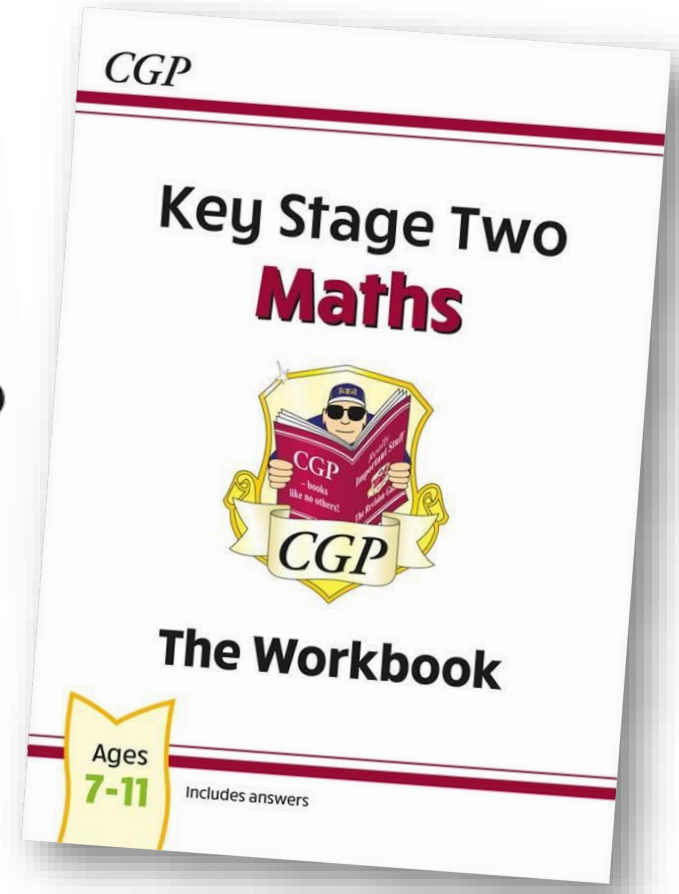
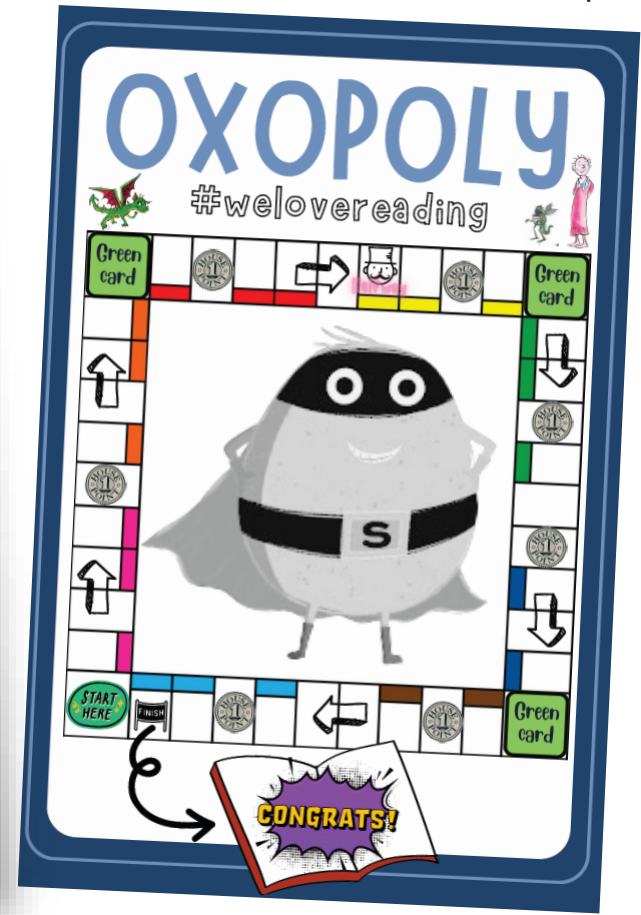
# Homework

Spellings, reading and TTRS will start immediately. Year 5 and 6 will begin using CPG maths books to consolidate their learning after October half term. All work will be an opportunity to consolidate learning so they can do this independently at home. Homework will be set on Thursdays and be due the following Tuesday.

## Spelling word list for Year 5 and Year 6

100 words that children in England are expected to be able to spell by the end of Year 6 (age 11). How many can you spell?

- |             |                          |               |             |
|-------------|--------------------------|---------------|-------------|
| accommodate | correspond               | identity      | queue       |
| accompany   | criticise (critic + ise) | immediate(ly) | recognise   |
| according   | curiosity                | individual    | recommend   |
| achieve     | definite                 | interfere     | relevant    |
| aggressive  | desperate                | interrupt     | restaurant  |
| amateur     | determined               | language      | rhyme       |
| ancient     | develop                  | leisure       | rhythm      |
| apparent    | dictionary               | lightning     | sacrifice   |
| appreciate  | disastrous               | marvellous    | secretary   |
| attached    | embarrass                | mischievous   | shoulder    |
| available   | environment              | muscle        | signature   |
| average     | equip (-ped, -ment)      | necessary     | sincere(ly) |
| awkward     | especially               | neighbour     | soldier     |
| bargain     | exaggerate               | nuisance      | stomach     |
| bruise      | excellent                | occupy        | sufficient  |
| category    | existence                | occur         | suggest     |
| cemetery    | explanation              | opportunity   | symbol      |
| committee   | familiar                 | parliament    | system      |
| communicate | foreign                  | persuade      | temperature |
| community   | forty                    | physical      | thorough    |
| competition | frequently               | prejudice     | twelfth     |
| conscience  | government               | privilege     | variety     |
| conscious   | guarantee                | profession    | vegetable   |
| controversy | harass                   | programme     | vehicle     |
| convenience | hindrance                | pronunciation | yacht       |





# Y6 SATs

---

The statutory key stage 2 tests are timetabled from Monday 12<sup>th</sup> May to Thursday 15<sup>th</sup> May 2025.



# Instagram

---



If you do not follow us already, please do and check out all the amazing things that are happening in school day to day.