

WELCOME

HELLO!

Hi!

Welcome back! We hope you are excited for the term ahead. We have lots of learning opportunities planned, and fingers crossed we can enjoy some summer sunshine!

These are subject to change so please ensure PE kits are in school at the start of each week.

Meerkats and Owls: PE on **Tuesdays** and **Wednesdays**

Meerkats' library slot: **Thursday**  
Owls' library slot: **Friday**

## Science

This term, we will be getting green-fingered as we turn our attention to plants. We will be exploring types of seeds and bulbs, and planning our own experiment where we will observe changes of time. We will also be looking at seasonal change as we move into summer, and will be recording weather and temperature patterns as well as looking at changes in our school environment.

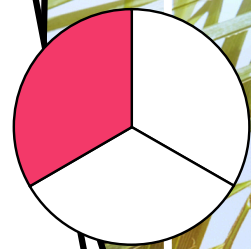
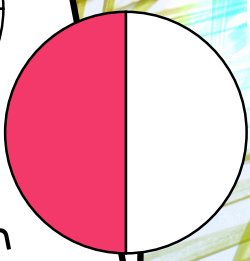
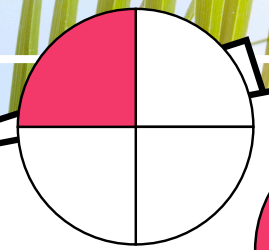
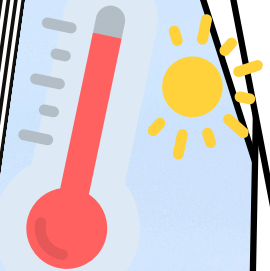
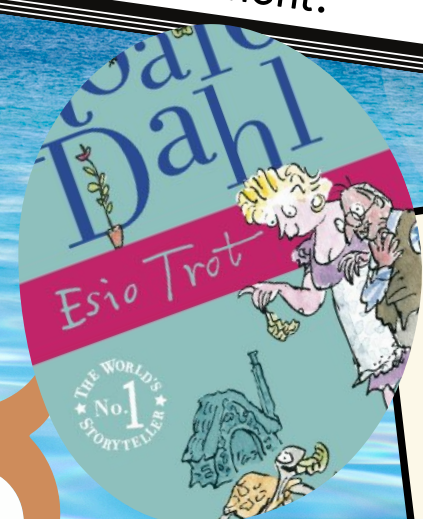
## Maths

Maths this term will begin with finding halves, quarters and thirds (Year 2) of shapes and amounts. From there, we will be moving on to time, measures and geometry. Alongside this, we will continue to work on developing our fluency and accuracy as well as further developing our language and vocabulary to discuss, reason and solve problems.

## English

We're going to the zoo, zoo, zoo! To start our term, we will be writing recounts of our school trip focusing on accurate use of past tense, time adverbials and super description to catch the attention of our readers. After this, we will be reading the wonderful "Esio Trot" by Roald Dahl and writing our own stories. To conclude our term, we will be learning "Dinosaur Rap" by John Foster and will be bringing our poems to life through performance.

# MEERKATS & OWLS

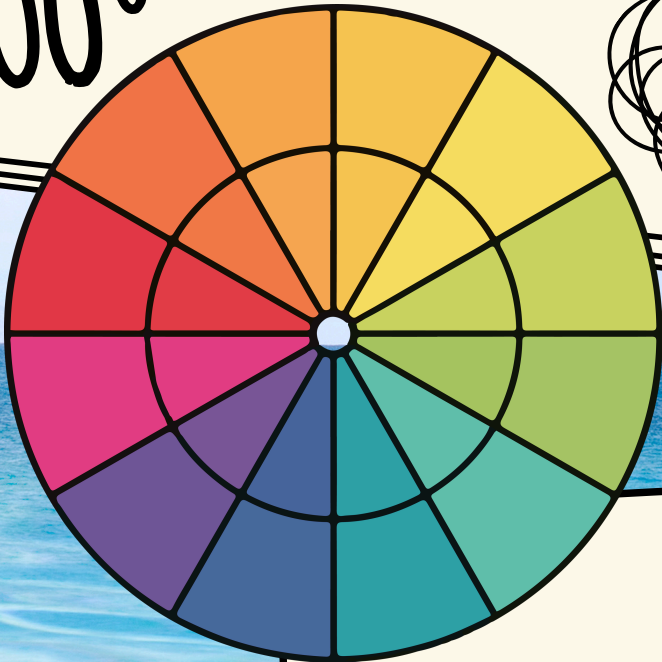


## History

This term in History, we will explore the past of Shepshed, learning how the local area has changed over time, including key landmarks and daily life. We will then study famous people from Leicestershire, discovering their achievements and how they have made a difference locally and beyond.

## Art

We will be completing a unit of work on "Expressive Painting" this term. By exploring the colour wheel, we will be finding out about primary and secondary colours and will be using a range of mark-making tools to create our own pieces.

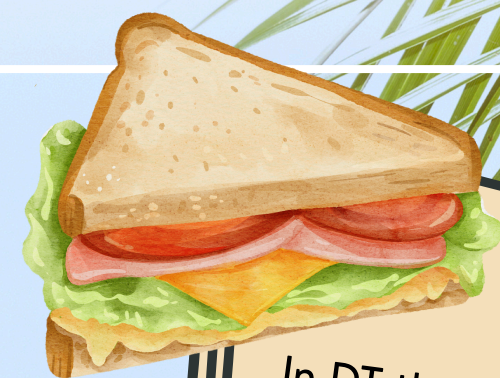


## DT

In DT this term, we will be exploring food technology by planning, preparing and (most importantly!) enjoying our own sandwiches. Pupils will learn how to safely use simple tools, handle ingredients with care, and follow basic hygiene rules, while developing their confidence, independence and creativity in the kitchen.

## PE

This term, we will be building on our knowledge to begin exploring track and field events, as well as developing key skills in invasion sports such as teamwork, control and strategy. After half term, we will turn our attention fully to athletics as we prepare for our exciting annual Oxley Sports Day.



## Music

During music this term, we will sing and perform songs which contain a small range of notes and use actions and dynamics to enhance our performances. We will also evaluate our own and other pupils' performances using year group-appropriate vocabulary.



All Are Welcome

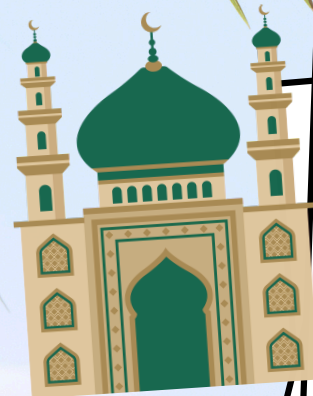


This lesson uses All Are Welcome to explore the importance of inclusion and belonging. Pupils will discuss what it means to feel welcomed and how we can ensure everyone feels valued in our community, promoting kindness, respect and equality for all.

everyone's welcome

## RE

Our learning question this term is "What makes some places sacred to believers?" We will be exploring why places such as churches, mosques, and synagogues matter to believers. We will examine artefacts, symbols, rituals, and practices associated with these spaces. We will enhance our understanding of how sacredness is expressed through worship, prayer, gathering, and celebration.



## Computing

This term, we will be recapping our learning on programming. We will begin to understand that sequences of commands have an outcome and make predictions based on our learning. We will modify designs to create our own quiz questions in ScratchJr.



SCRATCHJr



## PSHE

In PSHE this term, our units of work will include "Managing Change", and we will be looking at how we can manage transitions positively and know where to find help when we need it. Finally, we will be completing our unit on RSE (Relationships and Sex Education) - more information on this will follow nearer the time.



SUPPORT