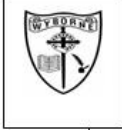


Wyborne School Summer Term Curriculum Newsletter



Yr 6: Elephant & Eagle Classes

Dear Parents/ Carers,

We cannot believe that we are in the final term of this year! We are so looking forward to everything we have planned for the summer term, especially our upcoming School and Home Journeys. This term will focus on transition and preparing the children for their new beginnings at secondary school.

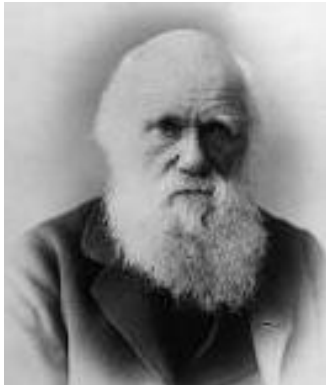
The spring term was a learning curve for us all and we are so proud of all of the children for how they coped with all the challenges that came their way. We are also very grateful for the fantastic support that we received from the parents and carers – thank you.



Follow us on: <https://twitter.com/#!/WybornePrimary>



Remember to check WEDUC regularly for updates, home learning, reminders, news and celebrations.

Dates for Diary Summer Term	Home Learning	
<p>22.4.2021 - Stephen Lawrence Day 7.5.2021 – NSPCC Number Day 14.5.2021 – Pyjamarama Day</p> <p>17.5.2021 – 21.5.2021 – School / Home Journey week 31.5.2021 – 4.6.2021 - Half term 23.7.2021 – End of Term</p> <p>Please check Weduc regularly for any other key dates that may be added</p>	<p>Homework will continue to be set weekly and will include a piece of maths and English as well as a spelling list, which will be tested on a Wednesday. Spelling lists can also be found on Spelling Frame. If you need a reminder of your child’s Spelling Frame log in details please let us know and if you have any questions regarding homework, please do not hesitate to ask one of us, we will be happy to help.</p> <p>Reading for pleasure and reading fluency are very important skills to develop and we would like the children to read for at least ten minutes every day. If you need any book recommendations for your child again just ask and we can help. Talking about books and stories is important.</p> <p>By Year 6, the children should know by heart all times tables to 12x12 so please check how they are doing with these and practise as much as you can as it will help them in various aspects of maths. There are many games you can play together indoors and outdoors to practise times tables, as well as online (Hit the Button for example).</p> <p>Further practice of telling the time would benefit the children. There are websites that you may find useful, for example:</p> <p>www.corbettmathsprimary.com, www.topmarks.co.uk, www.spellingframe.co.uk, www.crickweb.co.uk.</p> <p>There are further websites listed on the home learning area on Weduc and we will refresh these regularly.</p>	
		<p>Maths - In maths we will focus on revision and consolidation of key mathematical concepts and calculations through arithmetic, problem solving, puzzles and games.</p> <p>English - Reading: We will continue to develop comprehension and inference skills as well as developing reading for pleasure during whole class reading lessons. DERIC will form the basis of our reading lessons:</p> <p>D- decoding E – explain R – retrieval</p>



I – Inference

C – Choice

Inference skills can also be developed using short films. We will also have a daily story time where we will read aloud to the children.

Broadening the children's vocabulary is really important so encouraging reading at home and discussing unfamiliar words in texts with your children can be very beneficial to them.

Grammar, punctuation and spelling:

We will revise known spelling patterns and learn words from the Years 5 and 6 spelling list. In grammar, we will revise how to effectively use a range of punctuation and the effect different punctuation marks have.

Writing:

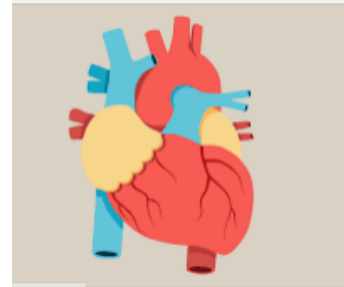
Our focus will be developing writing stamina and we will produce extended pieces of writing in a variety of genres, using our core texts as our inspiration. We are planning to read Darwin's Dragons and Pig Heart Boy, as looking at some shorter texts and poetry.

Science –

The science topics that we will focus on are evolution and animals including humans, particularly the cardiovascular system.

We will investigate how living things have changed over time, how plants and animals have adapted to their environments and how some traits are inherited by offspring. We will focus on the work of Darwin. For our final unit, we will identify the key parts of the human body, particularly the cardiovascular system.

Also, we will have plenty of opportunities to visit and work in the science garden.



History –

Our history topic, The Victorians, will continue in the first part of the term. Following our work on significant individuals and events of the Victorian era, we will be moving on to looking at the daily life and homes of Victorians. We will make a link with science and our core text, Darwin's Dragons, to find out more about Charles Darwin.

RE –

In RE we will be learning about Judaism. We will find out about Jewish symbols and traditions, Bar / Bat Mitzvahs and other celebrations and synagogues.

Art and DT -

In art we will continue our work on pre-Raphaelite artists before moving on to observation and paintings of wildlife and some clay work linked to science and English.

In DT we will create fair ground rides using a range of techniques and materials.

PSHE and Citizenship –

Our focus for PSHE is growing up and transition. This will involve the children learning about the changes their bodies and emotions will go through as they grow up. We will also do a lot of work in preparation for their transition to Year 7.

MfL –

Our focus will be on French vocabulary for animals, colours and some adjectives with a revision of number and classroom instructions.

General Reminders:

- Named water bottles should be brought into school every day – no juice or fizzy drinks please.
- The children are invited to bring in a **healthy** snack to eat at playtime, such as fruit, cereal bars, vegetable sticks etc.
- **PE Kits – we will continue to ask the children to come into school wearing their PE kits on the days that we have PE lessons and not to bring in a separate PE kit to change in to. Many thanks for your co-operation with this.**
- The parents of any children bringing mobile phones into school should sign a copy of the Mobile Phone Policy – if you need a copy of the policy please let us know and we will arrange for one to be sent home.
- If you decide to allow your child to start to walk to and from school alone please could you send in written confirmation of this either via email or a handwritten letter to the office.
- Please could you remind children that they should **not** bring their own toys in to school.
- **Packed lunches should not contain any products containing nuts.**