

# Blean Primary School



## Pupil Mental Health and Emotional Wellbeing Policy

Date Prepared: March 2023

Date Approved by Governing Body: awaiting approval

Date to be reviewed: March 2024

This policy was written in consultation with staff, pupils, parents and professionals involved in mental health and wellbeing.

### **Policy Statement**

At Blean Primary School, we are committed to supporting the emotional health and wellbeing of our pupils and staff.

We have a supportive and caring ethos and our approach is respectful and kind, where each individual and contribution is valued.

At our school we know that everyone experiences life challenges that can make us vulnerable and at times, anyone may need additional emotional support. We take the view that positive mental health is everybody's business and that we all have a role to play.

At our school we:

- help children to understand their emotions and feelings better
- help children feel comfortable sharing any concerns or worries
- help children socially to form and maintain relationships
- promote self-esteem and ensure children know that they count
- encourage children to be confident and 'dare to be different'
- help children to develop emotional resilience and to manage setbacks

We promote a mentally healthy environment through:

- Promoting our school values and encouraging a sense of belonging
- Promoting pupil voice and opportunities to participate in decision-making
- Celebrating academic and non-academic achievements
- Providing opportunities to develop a sense of worth through taking responsibility for themselves and others
- Providing opportunities to reflect
- Access to appropriate support that meets their needs

We pursue our aims through:

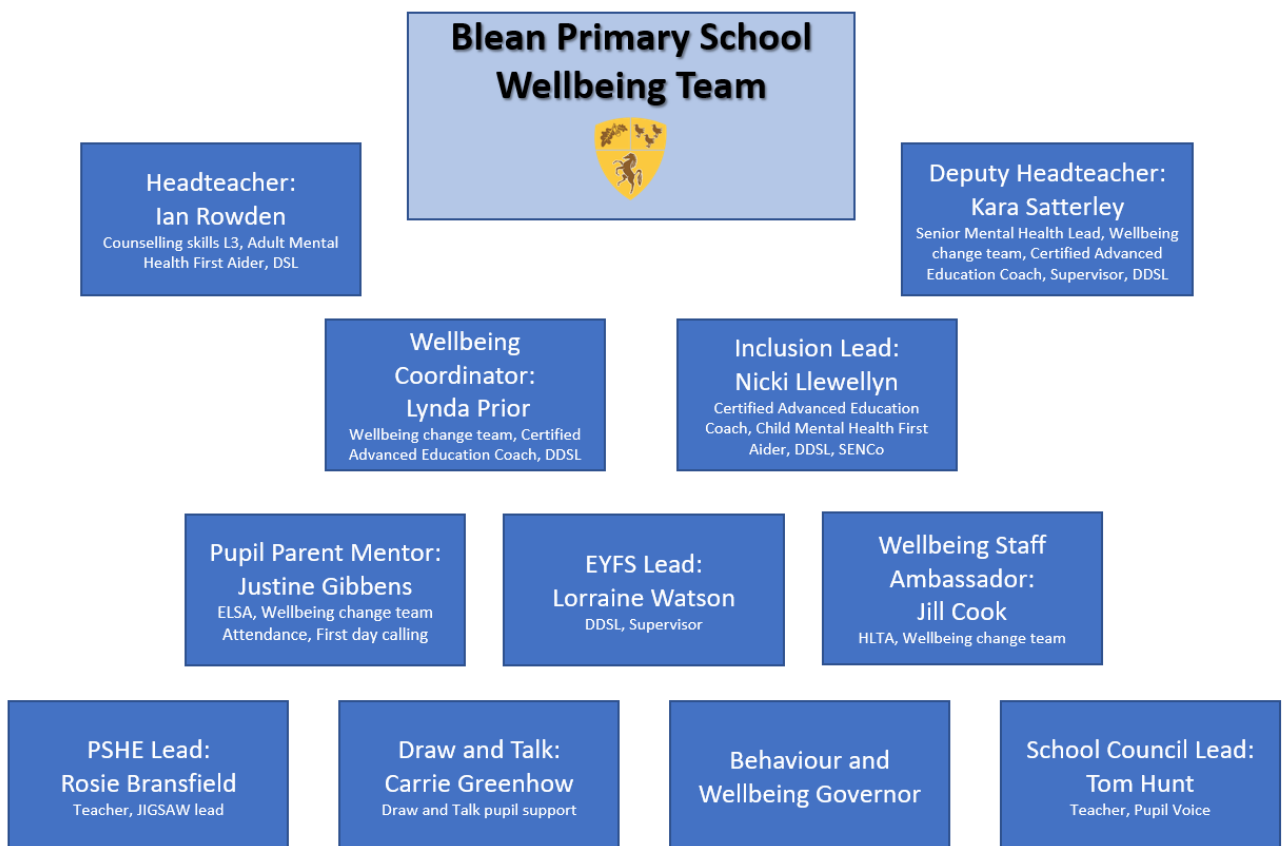
- Universal, whole school approaches
- Support for pupils going through recent difficulties including bereavement
- Specialised, targeted approaches aimed at pupils with more complex or long-term difficulties including attachment disorder

## Scope

This policy should be read in conjunction with our Medical policy and our SEND policy in cases where pupils mental health needs overlap with these. This policy should also be read in conjunction with policies for Behaviour and Anti-bullying, and PSHE and SMSC policies. It should also sit alongside child protection procedures.

## Lead Members of Staff

Whilst all staff have a responsibility to promote the mental health of students, staff with a specific, relevant remit include:



## Teaching about Mental Health

The skills, knowledge and understanding needed by our students to keep themselves mentally healthy and safe are included as part of our developmental PSHE curriculum - JIGSAW.

The specific content of lessons will be determined by the specific needs of the cohort we teach and we will also use the JIGSAW and PSHE Association Guidance to ensure that we teach mental health and emotional wellbeing issues in a safe and sensitive manner.

### **Targeted support**

The school will offer support through targeted approaches for individual pupils or groups of pupils which may include:

- Circle time approaches or 'circle of friends' activities
- Targeted use of JIGSAW resources.
- Managing feelings resources e.g. 'worry boxes' and 'worry monsters'
- Managing emotions resources such as 'the incredible 5 point scale' 'zones of regulation'
- ELSA
- Therapeutic activities including art, lego and relaxation and mindfulness techniques
- Draw and Talk intervention

The school will make use of resources to assess and track wellbeing as appropriate including:

- Strengths and Difficulties questionnaire
- The Boxall Profile
- Emotional literacy scales
- PASS assessments

### **Signposting**

We will ensure that staff, pupils and parents are aware of what support is available within our school and how to access further support via a tab on our school website.

### **Identifying needs and Warning Signs**

All staff will look out for changes in pupils and will alert a member of the wellbeing team if they have any concerns. Staff are trained at identifying a range of possible difficulties including:

- Attendance
- Punctuality
- Relationships
- Approach to learning
- Physical indicators
- Negative behaviour patterns
- Family circumstances
- Recent bereavement

- Health indicators

These warning signs should always be taken seriously and staff observing any of these warning signs should communicate their concerns with a member of the wellbeing team.

Possible warning signs include:

- Changes in eating / sleeping habits
- Becoming socially withdrawn
- Changes in activity and mood
- Talking or joking about self-harm or suicide
- Expressing feelings of failure, uselessness or loss of hope
- Repeated physical pain or nausea with no evident cause
- An increase in lateness or absenteeism

### **Working with Parents**

In order to support parents we will:

- Highlight sources of information and support about mental health and emotional wellbeing on our school website
- Share and allow parents to access sources of further support e.g. through parent forums
- Ensure that all parents are aware of who to talk to, and how to get about this, if they have concerns about their child
- Make our emotional wellbeing and mental health policy easily accessible to parents
- Share ideas about how parents can support positive mental health in their children
- Keep parents informed about the mental health topics their children are learning about in PSHE and share ideas for extending and exploring this learning at home

### **Working with other agencies and partners**

As part of our targeted provision the school will work with other agencies to support children's emotional health and wellbeing including:

- The school nurse team
- Educational psychology services
- Behaviour support through Early Help

- Paediatricians
- CAMHS (child and adolescent mental health service)
- Counselling services
- Family support workers
- Therapists

### **Training**

As a minimum, all staff will receive regular training about recognising and responding to mental health issues as part of their regular child protection training in order to enable them to keep students safe.

The MindEd learning portal provides free online training suitable for staff wishing to know more about a specific issue.

The following websites offer Mental Health Awareness Training and have been shared with all staff:

<https://alison.com/course/mental-health-training-for-teachers>

<https://mentallyhealthyschools.org.uk/resources/mental-and-emotional-health-in-schools-online-cpd/>

<https://www.youngminds.org.uk/professional/schools/>

<https://freecoursesinengland.co.uk/mental-health-training/>

Training opportunities for staff who require more in-depth knowledge will be considered as part of our appraisal process and additional CPD will be supported throughout the year where it becomes appropriate due to developing situations with one or more pupils.